



Rabbit Anti-SHQ1 antibody

SL17473R

Product Name:	SHQ1
Chinese Name:	SHQ1蛋白抗体
Alias:	FLJ10539; Protein SHQ1 homolog; shq1; SHQ1 homolog (S. cerevisiae); SHQ1 homolog; SHQ1, H/ACA ribonucleoprotein assembly factor; SHQ1 HUMAN; Shq1p.
Organism Species:	Rabbit
Clonality:	Polyclonal
React Species:	Human,Mouse,Rat,Pig,Cow,Horse,Rabbit,Sheep,
Applications:	WB=1:500-2000ELISA=1:500-1000IHC-P=1:400-800IHC-F=1:400-800ICC=1:100-500IF=1:100-500 (Paraffin sections need antigen repair) not yet tested in other applications. optimal dilutions/concentrations should be determined by the end user.
Molecular weight:	65kDa
Cellular localization:	cytoplasmic
Form:	Lyophilized or Liquid
Concentration:	1mg/ml
immunogen:	KLH conjugated synthetic peptide derived from human SHQ1:21-120/577
Lsotype:	IgG
Purification:	affinity purified by Protein A
Storage Buffer:	0.01M TBS(pH7.4) with 1% BSA, 0.03% Proclin300 and 50% Glycerol.
Storage:	Store at -20 °C for one year. Avoid repeated freeze/thaw cycles. The lyophilized antibody is stable at room temperature for at least one month and for greater than a year when kept at -20°C. When reconstituted in sterile pH 7.4 0.01M PBS or diluent of antibody the antibody is stable for at least two weeks at 2-4 °C.
PubMed:	PubMed
Product Detail:	SHQ1 assists in the assembly of H/ACA-box ribonucleoproteins that function in the processing of ribosomal RNAs, modification of spliceosomal small nuclear RNAs, and stabilization of telomerase (see MIM 602322) (Grozmanov et al., 2009 [PubMed 19383767]).[supplied by OMIM, Dec 2010] Function:

Required for the quantitative accumulation of H/ACA ribonucleoproteins (RNPs), including telomerase, probably through the stabilization of DKC1, from the time of its synthesis until its association with NOP10, NHP2, and NAF1 at the nascent H/ACA RNA.

Subcellular Location:

Cytoplasm > cytosol. Nucleus > nucleoplasm. May at least partially shuttle between cytosol and nucleoplasm. In the nucleoplasm, exhibits a granular pattern, but is excluded from nucleoli and Cajal bodies. Absent from most H/ACA-box RNA transcription sites.

Similarity:

Belongs to the SHQ1 family.
Contains 1 CS domain.

SWISS:

Q6PI26

Gene ID:

55164

Database links:

[Entrez Gene: 55164](#) Human

[Entrez Gene: 72171](#) Mouse

[Omim: 613663](#) Human

[SwissProt: Q6PI26](#) Human

[SwissProt: Q7TMX5](#) Mouse

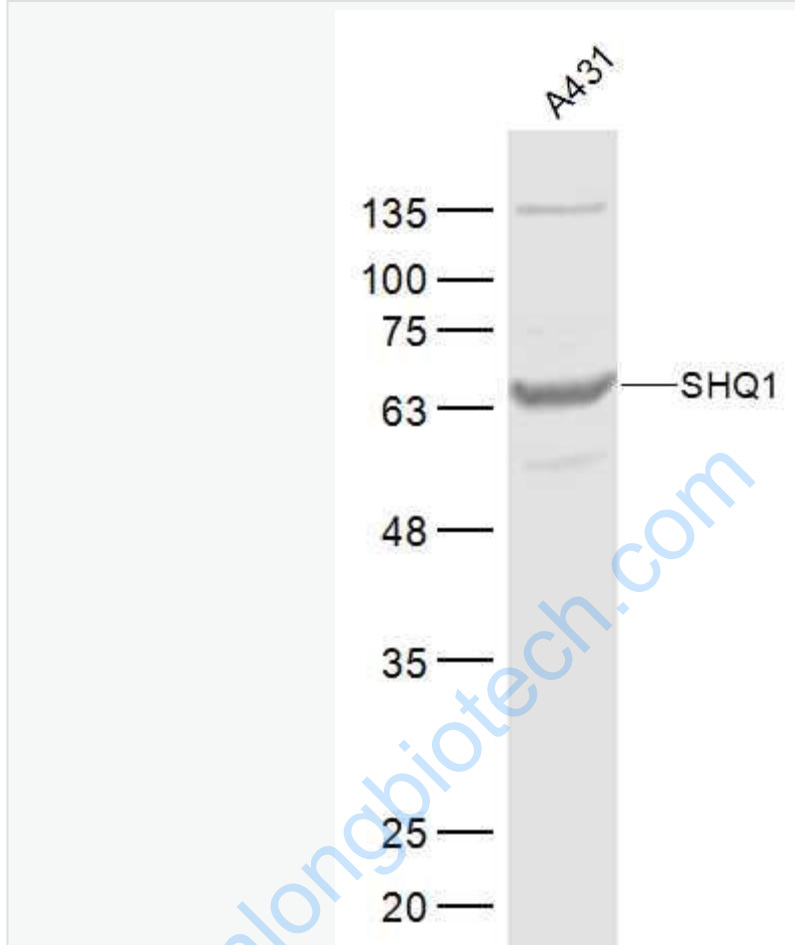
[Unigene: 606584](#) Human

[Unigene: 256022](#) Mouse

Important Note:

This product as supplied is intended for research use only, not for use in human, therapeutic or diagnostic applications.

Picture:



Sample:

A431(Human) Cell Lysate at 30 ug

Primary: Anti-SHQ1 (SL17473R) at 1/300 dilution

Secondary: IRDye800CW Goat Anti-Rabbit IgG at 1/20000 dilution

Predicted band size: 65 kD

Observed band size: 65 kD