



Rabbit Anti-Shroom 3 antibody

SL17474R

Product Name:	Shroom 3
Chinese Name:	Shroom 3蛋白抗体
Alias:	APXL3; hShrmL; MSTP013; Protein Shroom3; Shrm; Shrm3; SHRM3_HUMAN; ShrmL; Shroom family member 3; Shroom-related protein; shroom3.
Organism Species:	Rabbit
Clonality:	Polyclonal
React Species:	Human,
Applications:	ELISA=1:500-1000IHC-P=1:400-800IHC-F=1:400-800ICC=1:100-500IF=1:100-500 (Paraffin sections need antigen repair) not yet tested in other applications. optimal dilutions/concentrations should be determined by the end user.
Molecular weight:	217kDa
Cellular localization:	cytoplasmic
Form:	Lyophilized or Liquid
Concentration:	1mg/ml
immunogen:	KLH conjugated synthetic peptide derived from human Shroom 3:101-200/1996
Lsotype:	IgG
Purification:	affinity purified by Protein A
Storage Buffer:	0.01M TBS(pH7.4) with 1% BSA, 0.03% Proclin300 and 50% Glycerol.
Storage:	Store at -20 °C for one year. Avoid repeated freeze/thaw cycles. The lyophilized antibody is stable at room temperature for at least one month and for greater than a year when kept at -20°C. When reconstituted in sterile pH 7.4 0.01M PBS or diluent of antibody the antibody is stable for at least two weeks at 2-4 °C.
PubMed:	PubMed
Product Detail:	This gene encodes a PDZ-domain-containing protein that belongs to a family of Shroom-related proteins. This protein may be involved in regulating cell shape in certain tissues. A similar protein in mice is required for proper neurulation. [provided by RefSeq, Jan 2011] Function:

Controls cell shape changes in the neuroepithelium during neural tube closure. Induces apical constriction in epithelial cells by promoting the apical accumulation of F-actin and myosin II, and probably by bundling stress fibers. Induces apicobasal cell elongation by redistributing gamma-tubulin and directing the assembly of robust apicobasal microtubule arrays.

Subunit:

Interacts with F-actin.

Subcellular Location:

Cell junction; adherens junction. Cytoplasm > cytoskeleton. Colocalizes with F-actin in stress fibers and adherens junctions.

Similarity:

Belongs to the shroom family.
Contains 1 ASD1 domain.
Contains 1 ASD2 domain.
Contains 1 PDZ (DHR) domain.

SWISS:

Q8TF72

Gene ID:

57619

Database links:

[Entrez Gene: 57619](#) Human

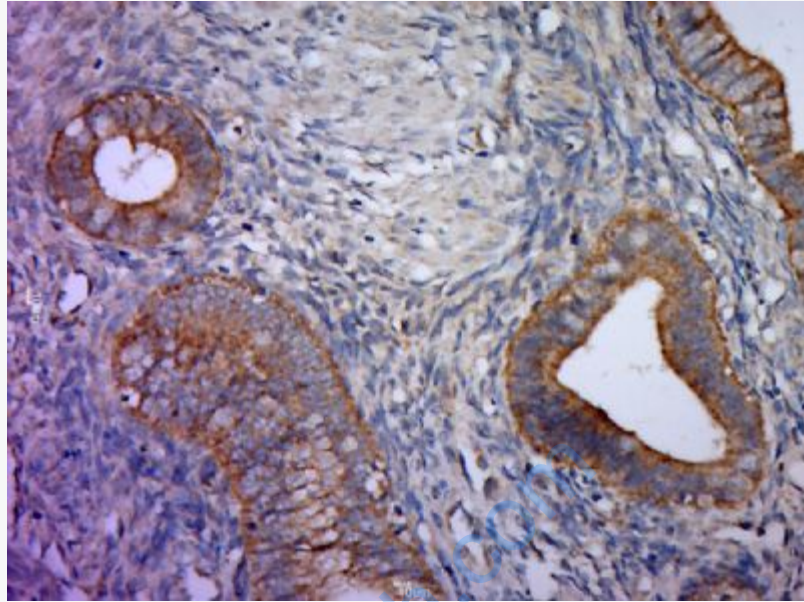
[Omim: 604570](#) Human

[SwissProt: Q8TF72](#) Human

[Unigene: 702168](#) Human

Important Note:

This product as supplied is intended for research use only, not for use in human, therapeutic or diagnostic applications.



Picture:

Paraformaldehyde-fixed, paraffin embedded (Human cervical cancer); Antigen retrieval by boiling in sodium citrate buffer (pH6.0) for 15min; Block endogenous peroxidase by 3% hydrogen peroxide for 20 minutes; Blocking buffer (normal goat serum) at 37°C for 30min; Antibody incubation with (Shroom family member 3; Shroom 3) Polyclonal Antibody, Unconjugated (SL17474R) at 1:400 overnight at 4°C, followed by a conjugated secondary (sp-0023) for 20 minutes and DAB staining.