



Rabbit Anti-Dopamine D5 receptor antibody

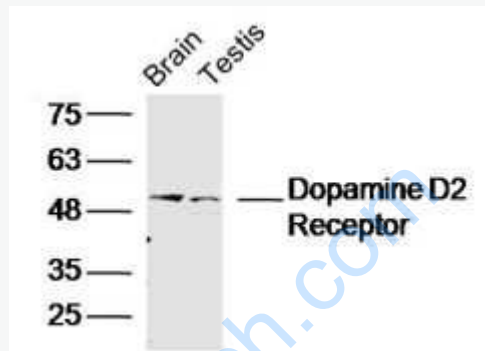
SL1747R

Product Name:	Dopamine D5 receptor
Chinese Name:	多巴胺受体D5抗体
Alias:	D(1B) dopamine receptor; D(5) dopamine receptor; D1 beta dopamine receptor; D1B dopamine receptor; D1beta dopamine receptor; D5 dopamine receptor; DBDR; Dopamine receptor D1B; DRD 1B; DRD 5; DRD1B; DRD1L2; DRD5; MGC10601; DRD5 HUMAN; DRD5 RAT.
文献引用 :	<p>Specific References(2) SL1747R has been referenced in 2 publications.</p> <p>[IF=2.35]Xu, Jiao-jiao, et al. "Dopamine D1 receptor activation induces dehydroepiandrosterone sulfotransferase (SULT2A1) in HepG2 cells." Acta Pharmacologica Sinica (2014).WB;Human.</p> <p>PubMed:24909515</p> <p>[IF=0.00]Hardt, Olaf, et al. "SSEA4 AND ST3GAL2 AS CHEMOTHERAPEUTIC DRUG RESPONSE BIOMARKERS." U.S. Patent No. 20,150,316,556. 5 Nov. 2015.FCM;Mouse.</p> <p>PubMed:1111</p>
Organism Species:	Rabbit
Clonality:	Polyclonal
React Species:	Human,Mouse,Rat,
Applications:	WB=1:500-2000ELISA=1:500-1000IHC-P=1:400-800IHC-F=1:400-800Flow-Cyt=1μg/testIF=1:100-500 (Paraffin sections need antigen repair) not yet tested in other applications. optimal dilutions/concentrations should be determined by the end user.
Molecular weight:	53kDa
Cellular localization:	The cell membrane
Form:	Lyophilized or Liquid
Concentration:	1mg/ml

immunogen:	KLH conjugated synthetic peptide derived from rat DRD5:251-350/475
Lsotype:	IgG
Purification:	affinity purified by Protein A
Storage Buffer:	0.01M TBS(pH7.4) with 1% BSA, 0.03% Proclin300 and 50% Glycerol.
Storage:	Store at -20 °C for one year. Avoid repeated freeze/thaw cycles. The lyophilized antibody is stable at room temperature for at least one month and for greater than a year when kept at -20°C. When reconstituted in sterile pH 7.4 0.01M PBS or diluent of antibody the antibody is stable for at least two weeks at 2-4 °C.
PubMed:	PubMed
Product Detail:	<p>This is one of the five types (D1 to D5) of receptors for dopamine. The activity of this receptor is mediated by G proteins which activate adenylyl cyclase. This receptor is neuron specific, localized primarily within limbic regions of the brain. Defects in DRD5 are a cause of blepharospasm and may be a cause of schizophrenia.</p> <p>Subcellular Location: Cell membrane; Multi-pass membrane protein.</p> <p>Tissue Specificity: Neuron-specific, localized primarily within limbic regions of the brain.</p> <p>Similarity: Belongs to the G-protein coupled receptor 1 family.</p> <p>SWISS: P25115</p> <p>Gene ID: 25195</p> <p>Database links:</p> <p>Entrez Gene: 1816Human Entrez Gene: 13492Mouse Entrez Gene: 25195Rat Omim: 126453Human SwissProt: P21918Human SwissProt: Q8BLD9Mouse SwissProt: P25115Rat Unigene: 380681Human Unigene: 167154Mouse Unigene: 138110Rat</p>

Important Note:

This product as supplied is intended for research use only, not for use in human, therapeutic or diagnostic applications.



Picture:

Sample:

Brain (Mouse) Lysate at 40 ug

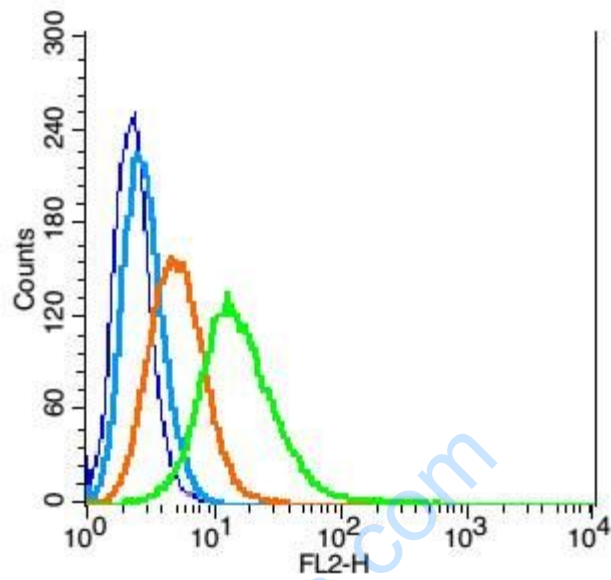
Testis (Mouse) Lysate at 40 ug

Primary: Anti- Dopamine D5 receptor (SL1747R) at 1/300 dilution

Secondary: IRDye800CW Goat Anti-Rabbit IgG at 1/20000 dilution

Predicted band size: 53kD

Observed band size: 53kD



Blank control: RSC96(blue).

Primary Antibody: Rabbit Anti- DRD5 antibody(SL1747R), Dilution: 1 μ g in 100 μ L
1X PBS containing 0.5% BSA;

Isotype Control Antibody: Rabbit IgG(orange) ,used under the same conditions);

Secondary Antibody: Goat anti-rabbit IgG-PE(white blue), Dilution: 1:200 in 1 X
PBS containing 0.5% BSA.

Protocol

The cells were fixed with 2% paraformaldehyde (10 min) . Antibody (SL1747R)
were incubated for 30 min on the ice, followed by 1 X PBS containing 0.5% BSA +
1 0% goat serum (15 min) to block non-specific protein-protein interactions. Then
the Goat Anti-rabbit IgG/PE antibody was added into the blocking buffer mentioned
above to react with the primary antibody of bs-1747R at 1/200 dilution for 30 min
on ice. Acquisition of 20,000 events was performed.