



Rabbit Anti-SIDT2 antibody

SL17485R

Product Name:	SIDT2
Chinese Name:	SIDT2蛋白抗体
Alias:	SIDT-2; B930096O19; BC023957; CGI 40; DKFZp686L17253; FLJ90656; MGC36407; MGC58967; RGD1308311; SID1 transmembrane family member 2; SID1 transmembrane family, member 2; SIDT2; SIDT2_HUMAN.
Organism Species:	Rabbit
Clonality:	Polyclonal
React Species:	Human,Mouse,Rat,Dog,Pig,Cow,Horse,Rabbit,Zebrafish,Sheep,
Applications:	WB=1:500-2000ELISA=1:500-1000IHC-P=1:400-800IHC-F=1:400-800ICC=1:100-500IF=1:100-500 (Paraffin sections need antigen repair) not yet tested in other applications. optimal dilutions/concentrations should be determined by the end user.
Molecular weight:	93kDa
Cellular localization:	The cell membrane
Form:	Lyophilized or Liquid
Concentration:	1mg/ml
immunogen:	KLH conjugated synthetic peptide derived from human SIDT2:201-300/832<Extracellular>
Lsotype:	IgG
Purification:	affinity purified by Protein A
Storage Buffer:	0.01M TBS(pH7.4) with 1% BSA, 0.03% Proclin300 and 50% Glycerol.
Storage:	Store at -20 °C for one year. Avoid repeated freeze/thaw cycles. The lyophilized antibody is stable at room temperature for at least one month and for greater than a year when kept at -20°C. When reconstituted in sterile pH 7.4 0.01M PBS or diluent of antibody the antibody is stable for at least two weeks at 2-4 °C.
PubMed:	PubMed
Product Detail:	SID-1 and SID-2 belong to the systemic RNA interference defective-1 (SID1) family of transmembrane proteins. SID-1, originally identified in <i>C. elegans</i> , is an 827 amino acid long protein. It localizes to the cell membrane and contains eleven transmembrane domains. This suggests that SID-1 possibly functions as a channel protein. The

overexpression of SID-1 enhances double stranded RNA (dsRNA) uptake in pancreatic ductal adenocarcinoma cells. SID-2, also first identified in *C. elegans*, is an 832 amino acid long protein with multiple transmembrane domains. At least two isoforms exist for SID-2 due to alternative splicing. Isoform 2 contains an additional 21 amino acids after residue 387 and has an alternate sequence that is 8 amino acids shorter for residues 814 to 832 of isoform 1.

Subcellular Location:

Lysosome membrane.

Post-translational modifications:

Glycosylated.

Similarity:

Belongs to the SID1 family.

SWISS:

Q8NBJ9

Gene ID:

51092

Database links:

[Entrez Gene: 51092](#) Human

[Entrez Gene: 214597](#) Mouse

[Entrez Gene: 315617](#) Rat

[SwissProt: Q8NBJ9](#) Human

[SwissProt: Q8CIF6](#) Mouse

[SwissProt: D3ZEH5](#) Rat

[Unigene: 712144](#) Human

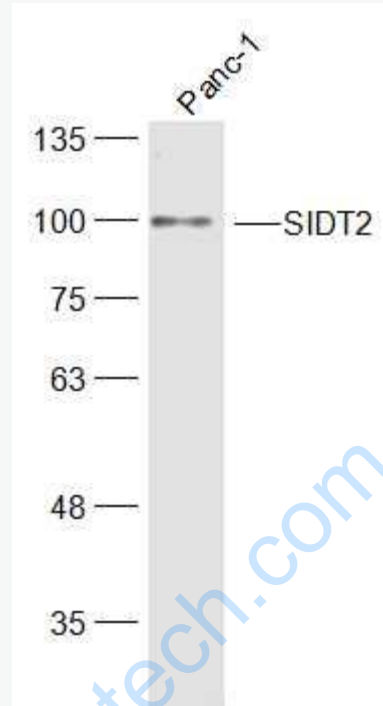
[Unigene: 379345](#) Mouse

[Unigene: 162997](#) Rat

Important Note:

This product as supplied is intended for research use only, not for use in human, therapeutic or diagnostic applications.

Picture:



Sample:

Panc-1(Human) Cell Lysate at 30 ug

Primary: Anti- SIDT2 (SL17485R) at 1/300 dilution

Secondary: IRDye800CW Goat Anti-Rabbit IgG at 1/20000 dilution

Predicted band size: 93 kD

Observed band size: 98 kD