



Rabbit Anti-SIPA1L1 antibody

SL17497R

Product Name:	SIPA1L1
Chinese Name:	信号诱导增殖相关蛋白1样蛋白1抗体
Alias:	DKFZp686G1344; E6 targeted protein 1; E6TP1; H_DJ1140G11.1; High risk human papilloma viruses E6 oncoproteins targeted protein 1; KIAA0440; Signal induced proliferation associated 1 like 1; Signal induced proliferation associated 1 like protein 1; SIPA1 like protein 1; WUGSC:H DJ1140G11.1.
Organism Species:	Rabbit
Clonality:	Polyclonal
React Species:	Human,Mouse,Rat,Chicken,Dog,Pig,Cow,Horse,Sheep,
Applications:	ELISA=1:500-1000IHC-P=1:400-800IHC-F=1:400-800ICC=1:100-500IF=1:100-500 (Paraffin sections need antigen repair) not yet tested in other applications. optimal dilutions/concentrations should be determined by the end user.
Molecular weight:	200kDa
Cellular localization:	The cell membrane
Form:	Lyophilized or Liquid
Concentration:	1mg/ml
immunogen:	KLH conjugated synthetic peptide derived from human SIPA1L1:1451-1550/1804
Lsotype:	IgG
Purification:	affinity purified by Protein A
Storage Buffer:	0.01M TBS(pH7.4) with 1% BSA, 0.03% Proclin300 and 50% Glycerol.
Storage:	Store at -20 °C for one year. Avoid repeated freeze/thaw cycles. The lyophilized antibody is stable at room temperature for at least one month and for greater than a year when kept at -20°C. When reconstituted in sterile pH 7.4 0.01M PBS or diluent of antibody the antibody is stable for at least two weeks at 2-4 °C.
PubMed:	PubMed
Product Detail:	SIPA1L1 (Signal-induced proliferation associated-like protein 1) is a member of the SIPA1 family of RapGAPs. SIPA1L1 was initially identified as a binding partner and degradation target of the E6 oncoprotein of high-risk papillomaviruses. Recently, it was discovered that Casein kinase I epsilon (CKIε), a Wnt-regulated kinase that regulates

Wnt/b-catenin signaling, also can bind to the carboxy-terminus of SIPA1L1. CKIe phosphorylates SIPA1L1, thereby reducing its stability and alleviating its inhibition of Rap1, a protein required for Wnt8/CKIe-mediated gastrulation during embryogenesis, suggesting SIPA1L1 plays important roles in embryo development as well as control of cell proliferation.

Subcellular Location:

Intracellular

SWISS:

O43166

Gene ID:

26037

Database links:

[Entrez Gene: 26037](#) Human

[Entrez Gene: 217692](#) Mouse

[Entrez Gene: 246212](#) Rat

[SwissProt: O43166](#) Human

[SwissProt: Q8C0T5](#) Mouse

[SwissProt: O35412](#) Rat

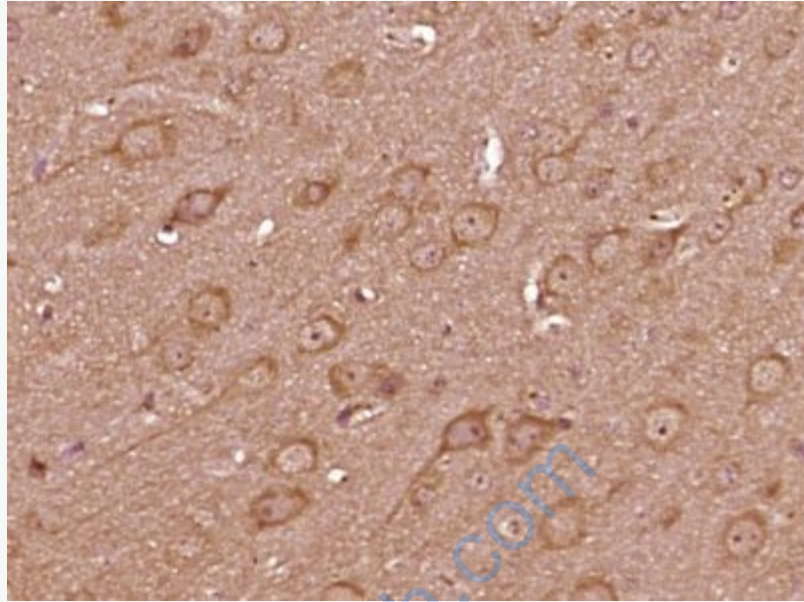
[Unigene: 654657](#) Human

[Unigene: 261333](#) Mouse

[Unigene: 10835](#) Rat

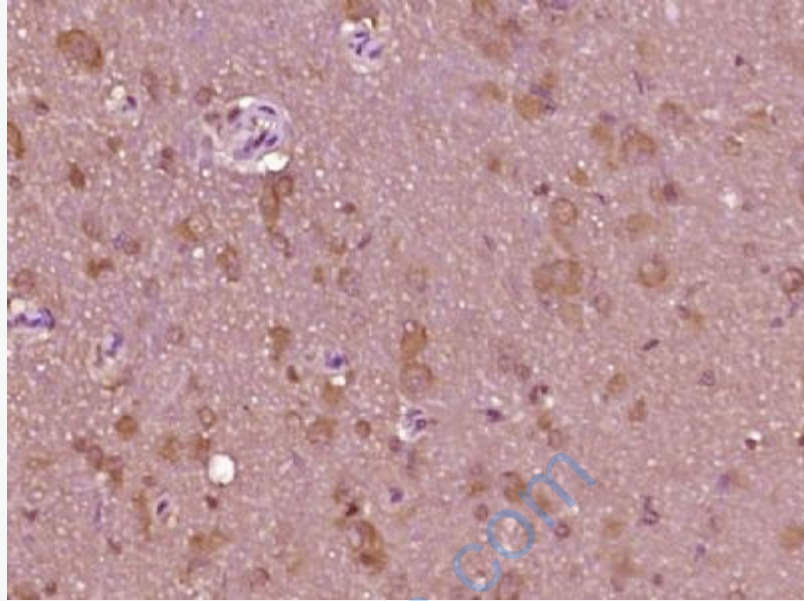
Important Note:

This product as supplied is intended for research use only, not for use in human, therapeutic or diagnostic applications.



Picture:

Paraformaldehyde-fixed, paraffin embedded (mouse brain tissue); Antigen retrieval by boiling in sodium citrate buffer (pH6.0) for 15min; Block endogenous peroxidase by 3% hydrogen peroxide for 20 minutes; Blocking buffer (normal goat serum) at 37°C for 30min; Antibody incubation with (SIPA1L1) Polyclonal Antibody, Unconjugated (SL17497R) at 1:400 overnight at 4°C, followed by operating according to SP Kit(Rabbit) (sp-0023) instructions and DAB staining.



Paraformaldehyde-fixed, paraffin embedded (rat brain tissue); Antigen retrieval by boiling in sodium citrate buffer (pH6.0) for 15min; Block endogenous peroxidase by 3% hydrogen peroxide for 20 minutes; Blocking buffer (normal goat serum) at 37°C for 30min; Antibody incubation with (SIPA1L1) Polyclonal Antibody, Unconjugated (SL17497R) at 1:400 overnight at 4°C, followed by operating according to SP Kit(Rabbit) (sp-0023) instructions and DAB staining.