



Rabbit Anti-SKOR2 antibody

SL17509R

Product Name:	SKOR2
Chinese Name:	SKOR2蛋白抗体
Alias:	CORL2; Functional smad suppressing element 18; Functional Smad-suppressing element on chromosome 18; Fussel-18; FUSSEL18; Ladybird homeobox corepressor 1-like protein; LBX1 corepressor 1-like protein; SKI family transcriptional corepressor 2; SKOR2; SKOR2 HUMAN.
Organism Species:	Rabbit
Clonality:	Polyclonal
React Species:	Human,Mouse,Rat,Dog,Cow,Sheep,
Applications:	ELISA=1:500-1000IHC-P=1:400-800IHC-F=1:400-800ICC=1:100-500IF=1:100-500 (Paraffin sections need antigen repair) not yet tested in other applications. optimal dilutions/concentrations should be determined by the end user.
Molecular weight:	104kDa
Cellular localization:	The nucleuscytoplasmic
Form:	Lyophilized or Liquid
Concentration:	1mg/ml
immunogen:	KLH conjugated synthetic peptide derived from human SKOR2:871-970/1001
Lsotype:	IgG
Purification:	affinity purified by Protein A
Storage Buffer:	0.01M TBS(pH7.4) with 1% BSA, 0.03% Proclin300 and 50% Glycerol.
Storage:	Store at -20 °C for one year. Avoid repeated freeze/thaw cycles. The lyophilized antibody is stable at room temperature for at least one month and for greater than a year when kept at -20°C. When reconstituted in sterile pH 7.4 0.01M PBS or diluent of antibody the antibody is stable for at least two weeks at 2-4 °C.
PubMed:	PubMed
Product Detail:	The sloan kettering virus (Ski) family of nuclear oncoproteins act as transcriptional regulators of TGF-β by interacting directly with SMAD proteins. Fussel-18 (functional Smad-suppressing element on chromosome 18), also known as SKOR2 (Ski family transcriptional corepressor 2), LBX1 corepressor 1-like protein, ladybird homeobox

corepressor 1-like protein or CORL2, is a 1,001 amino acid protein that belongs to the Ski family. Localizing to nucleus as well as cytoplasm, Fussel-18 is expressed in cerebellum, spinal cord and testis. Fussel-18 acts as an antagonist to TGF- β in the nervous system, possibly by functioning as a transcriptional repressor of SMAD2 and SMAD3. Existing as two alternatively spliced isoforms, the gene encoding Fussel-18 maps to human chromosome 18q21.1 and mouse chromosome 18 E3.

Function:

Exhibits transcriptional repressor activity (By similarity). Acts as a TGF-beta antagonist in the nervous system.

Subcellular Location:

Nucleus. Cytoplasm.

Tissue Specificity:

Expressed in cerebellum, spinal cord and testis. Isoform 2 is present in cerebellum (at protein level).

Similarity:

Belongs to the SKI family.

SWISS:

Q2VWA4

Gene ID:

652991

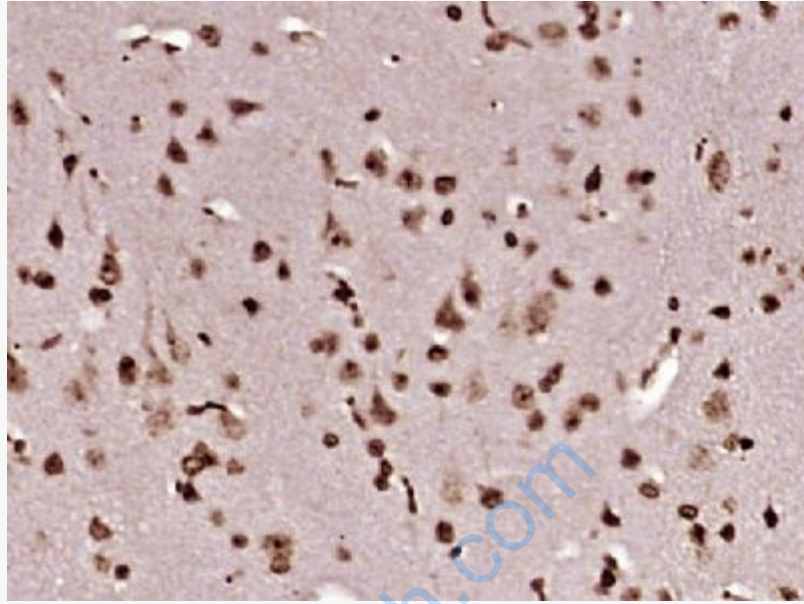
Database links:

[Entrez Gene: 652991](#) Human

[SwissProt: Q2VWA4](#) Human

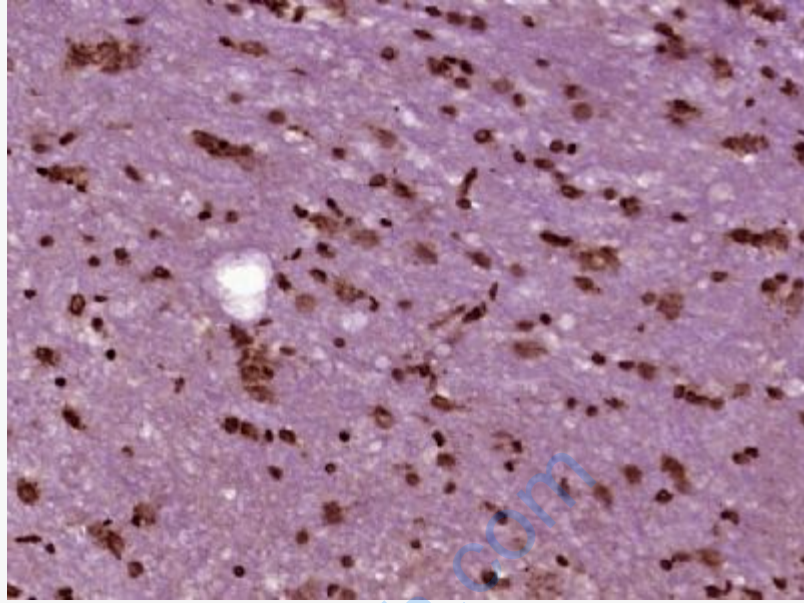
Important Note:

This product as supplied is intended for research use only, not for use in human, therapeutic or diagnostic applications.



Picture:

Paraformaldehyde-fixed, paraffin embedded (mouse brain tissue); Antigen retrieval by boiling in sodium citrate buffer (pH6.0) for 15min; Block endogenous peroxidase by 3% hydrogen peroxide for 20 minutes; Blocking buffer (normal goat serum) at 37°C for 30min; Antibody incubation with (SKOR2) Polyclonal Antibody, Unconjugated (SL17509R) at 1:400 overnight at 4°C, followed by operating according to SP Kit(Rabbit) (sp-0023) instructions and DAB staining.



Paraformaldehyde-fixed, paraffin embedded (rat spinal cord tissue); Antigen retrieval by boiling in sodium citrate buffer (pH6.0) for 15min; Block endogenous peroxidase by 3% hydrogen peroxide for 20 minutes; Blocking buffer (normal goat serum) at 37°C for 30min; Antibody incubation with (SKOR2) Polyclonal Antibody, Unconjugated (SL17509R) at 1:400 overnight at 4°C, followed by operating according to SP Kit(Rabbit) (sp-0023) instructions and DAB staining.