



## Rabbit Anti-SLAIN2 antibody

SL17513R

<b>Product Name:</b>	SLAIN2
<b>Chinese Name:</b>	SLAIN2蛋白抗体
<b>Alias:</b>	FLJ21611; KIAA1458; SLAI2_HUMAN; SLAIN motif containing 2; SLAIN motif family member 2; SLAIN motif-containing protein 2; SLAIN2.
<b>Organism Species:</b>	Rabbit
<b>Clonality:</b>	Polyclonal
<b>React Species:</b>	Human,Mouse,Rat,Horse,Rabbit,
<b>Applications:</b>	WB=1:500-2000ELISA=1:500-1000IHC-P=1:400-800IHC-F=1:400-800ICC=1:100-500IF=1:100-500 (Paraffin sections need antigen repair) not yet tested in other applications. optimal dilutions/concentrations should be determined by the end user.
<b>Molecular weight:</b>	63kDa
<b>Cellular localization:</b>	cytoplasmic
<b>Form:</b>	Lyophilized or Liquid
<b>Concentration:</b>	1mg/ml
<b>immunogen:</b>	KLH conjugated synthetic peptide derived from human SLAIN2:351-450/581
<b>Lsotype:</b>	IgG
<b>Purification:</b>	affinity purified by Protein A
<b>Storage Buffer:</b>	0.01M TBS(pH7.4) with 1% BSA, 0.03% Proclin300 and 50% Glycerol.
<b>Storage:</b>	Store at -20 °C for one year. Avoid repeated freeze/thaw cycles. The lyophilized antibody is stable at room temperature for at least one month and for greater than a year when kept at -20°C. When reconstituted in sterile pH 7.4 0.01M PBS or diluent of antibody the antibody is stable for at least two weeks at 2-4 °C.
<b>PubMed:</b>	<a href="#">PubMed</a>
<b>Product Detail:</b>	Binds to the plus end of microtubules and regulates microtubule dynamics and microtubule organization. Promotes cytoplasmic microtubule nucleation and elongation. Required for normal structure of the microtubule cytoskeleton during interphase.  <b>Subcellular Location:</b> Cytoplasm > cytoskeleton. Colocalizes with microtubules. Detected at the plus end of

growing microtubules.

**Tissue Specificity:**

Widely expressed with highest levels in adult liver, testis and ovary, and lowest levels in adult pancreas and spleen and in fetal brain.

**Post-translational modifications:**

Is highly phosphorylated during mitosis, but not during interphase. The highly phosphorylated form does not localize at microtubule plus ends and does not interact with MAPRE1 or CKAP5.

**Similarity:**

Belongs to the SLAIN motif-containing family.

**SWISS:**

Q9P270

**Gene ID:**

57606

**Database links:**

[Entrez Gene: 57606](#) Human

[Entrez Gene: 75991](#) Mouse

[Entrez Gene: 305310](#) Rat

[Omim: 610492](#) Human

[SwissProt: Q9P270](#) Human

[SwissProt: Q8CI08](#) Mouse

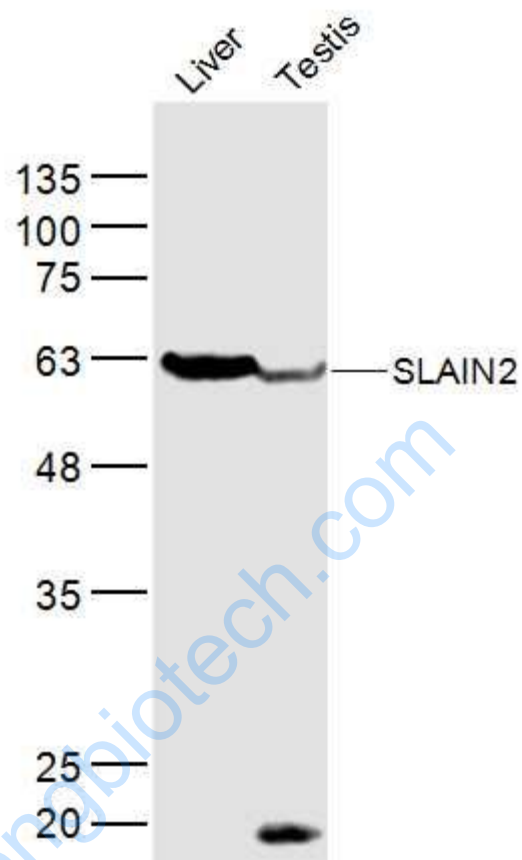
[Unigene: 479677](#) Human

[Unigene: 486263](#) Mouse

**Important Note:**

This product as supplied is intended for research use only, not for use in human, therapeutic or diagnostic applications.

Picture:



Sample:

Liver (Mouse) Lysate at 40 ug

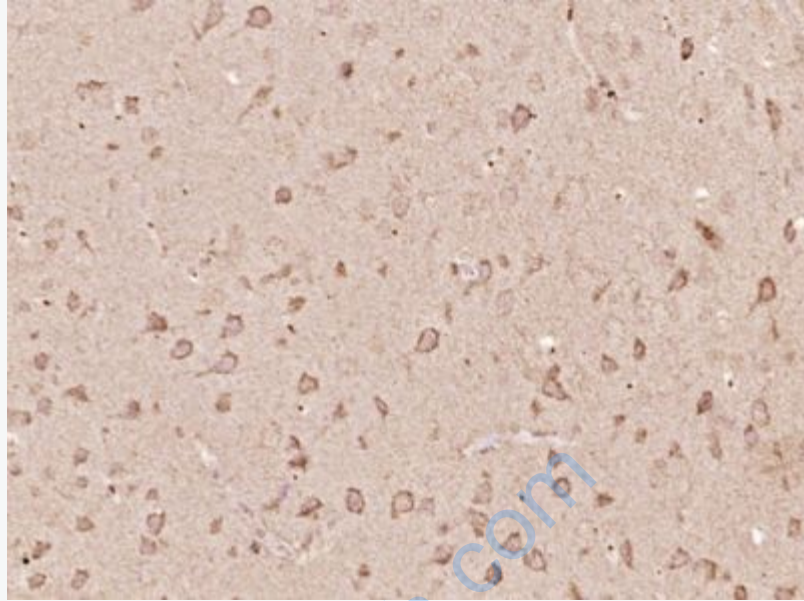
Testis (Mouse) Lysate at 40 ug

Primary: Anti-SLAIN2 (SL17513R) at 1/300 dilution

Secondary: IRDye800CW Goat Anti-Rabbit IgG at 1/20000 dilution

Predicted band size: 63 kD

Observed band size: 63 kD



Paraformaldehyde-fixed, paraffin embedded (Mouse brain); Antigen retrieval by boiling in sodium citrate buffer (pH6.0) for 15min; Block endogenous peroxidase by 3% hydrogen peroxide for 20 minutes; Blocking buffer (normal goat serum) at 37°C for 30min; Antibody incubation with (SLAIN2) Polyclonal Antibody, Unconjugated (SL17513R) at 1:400 overnight at 4°C, followed by operating according to SP Kit(Rabbit) (sp-0023) instructions and DAB staining.