



## Rabbit Anti-OSGEP antibody

SL17526R

<b>Product Name:</b>	OSGEP
<b>Chinese Name:</b>	O-唾液酸glycoprotein内肽酶抗体
<b>Alias:</b>	FLJ20411; GCPL-1; GCPL1; hOSGEP; KAE1; O sialoglycoprotein endopeptidase; OSGEP; OSGEP_HUMAN; OSGEP1; Pasteurella haemolytica metalloprotease homolog with glycoprotein substrates/gpc-like protein 1; Probable O sialoglycoprotein endopeptidase; Probable tRNA threonylcarbamoyladenosine biosynthesis protein osgep; PRSMG1; Prsmg1/Gcpl1; t(6)A37 threonylcarbamoyladenosine biosynthesis protein osgep.
<b>Organism Species:</b>	Rabbit
<b>Clonality:</b>	Polyclonal
<b>React Species:</b>	Human,Mouse,Rat,Dog,Pig,Cow,Horse,Rabbit,Zebrafish,Sheep,
<b>Applications:</b>	ELISA=1:500-1000IHC-P=1:400-800IHC-F=1:400-800ICC=1:100-500IF=1:100-500 (Paraffin sections need antigen repair) not yet tested in other applications. optimal dilutions/concentrations should be determined by the end user.
<b>Molecular weight:</b>	36kDa
<b>Cellular localization:</b>	The nucleus
<b>Form:</b>	Lyophilized or Liquid
<b>Concentration:</b>	1mg/ml
<b>immunogen:</b>	KLH conjugated synthetic peptide derived from human OSGEP:121-220/335
<b>Lsotype:</b>	IgG
<b>Purification:</b>	affinity purified by Protein A
<b>Storage Buffer:</b>	0.01M TBS(pH7.4) with 1% BSA, 0.03% Proclin300 and 50% Glycerol.
<b>Storage:</b>	Store at -20 °C for one year. Avoid repeated freeze/thaw cycles. The lyophilized antibody is stable at room temperature for at least one month and for greater than a year when kept at -20°C. When reconstituted in sterile pH 7.4 0.01M PBS or diluent of antibody the antibody is stable for at least two weeks at 2-4 °C.
<b>PubMed:</b>	<a href="#">PubMed</a>
<b>Product Detail:</b>	O-sialoglycoprotein endopeptidases cleave the polypeptide backbone of membrane glycoproteins that contain clusters of O-linked sialoglycans. Osgep (O-sialoglycoprotein

endopeptidase), also known as GCPL1, is a 335 amino acid protein that is a member of the peptidase M22 family. Osgep specifically cleaves the 31-Arg-1-Asp-32 bond in glycophorin A, but it does not cleave desialylated glycoproteins, unglycosylated proteins or glycoproteins that are only N-glycosylated. Though ubiquitously expressed at low levels, highest levels of Osgep are found in liver, skeletal muscle and kidney. OSGEPL1, also known as Qri7, is a 414 amino acid protein that belongs to the KAE1/YgjD family and exists as three alternatively spliced isoforms. In tRNAs that have codons beginning with adenine, OSGEPL1 is required for the formation of a threonylcarbamoyl group on adenosine.

**Function:**

Required for the formation of a threonylcarbamoyl group on adenosine at position 37 (t(6)A37) in tRNAs that read codons beginning with adenine.

**Tissue Specificity:**

Widely expressed at low level. Expressed in heart, placenta, liver, kidney, lung, brain, skeletal muscle and pancreas.

**Similarity:**

Belongs to the KAE1 / YgjD family.

**SWISS:**

Q9NPF4

**Gene ID:**

55644

**Database links:**

[Entrez Gene: 55644](#) Human

[Entrez Gene: 66246](#) Mouse

[Entrez Gene: 290028](#) Rat

[Omim: 610107](#) Human

[SwissProt: Q9NPF4](#) Human

[SwissProt: Q8BWU5](#) Mouse

[SwissProt: Q9WVS2](#) Rat

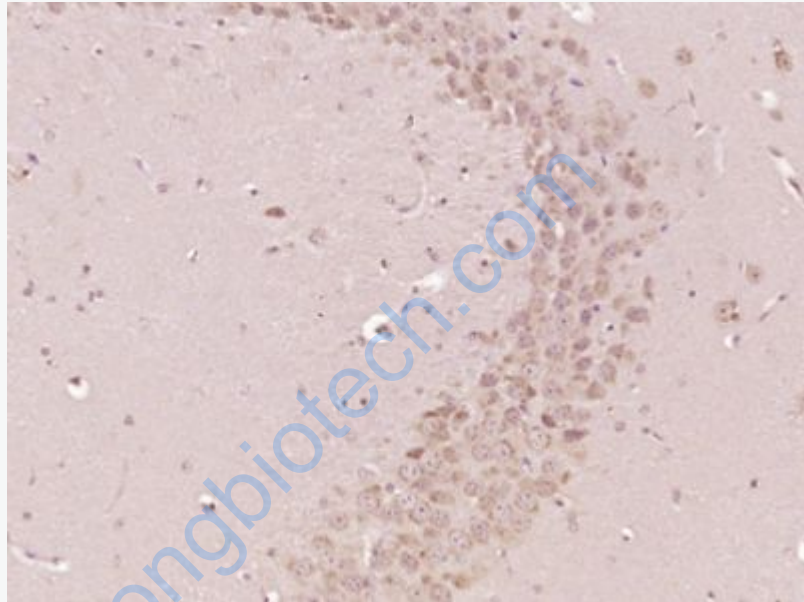
[Unigene: 525196](#) Human

[Unigene: 274791](#) Mouse

[Unigene: 27608](#) Rat

**Important Note:**

This product as supplied is intended for research use only, not for use in human, therapeutic or diagnostic applications.



**Picture:**

Paraformaldehyde-fixed, paraffin embedded (Mouse brain); Antigen retrieval by boiling in sodium citrate buffer (pH6.0) for 15min; Block endogenous peroxidase by 3% hydrogen peroxide for 20 minutes; Blocking buffer (normal goat serum) at 37°C for 30min; Antibody incubation with (OSGEP) Polyclonal Antibody, Unconjugated (SL17526R) at 1:400 overnight at 4°C, followed by operating according to SP Kit(Rabbit) (sp-0023) instructions and DAB staining.