



## Rabbit Anti-ECE2 antibody

SL1753R

<b>Product Name:</b>	ECE2
<b>Chinese Name:</b>	内皮素转化酶2抗体
<b>Alias:</b>	ECE2; MGC78487; ECE 2; Endothelin converting enzyme 2; Hypothetical protein MGC2408; KIAA0604; MGC17664; ECE2_HUMAN.
<b>Organism Species:</b>	Rabbit
<b>Clonality:</b>	Polyclonal
<b>React Species:</b>	Human,Mouse,Rat,
<b>Applications:</b>	WB=1:500-2000ELISA=1:500-1000IHC-P=1:400-800IHC-F=1:400-800IF=1:100-500 (Paraffin sections need antigen repair) not yet tested in other applications. optimal dilutions/concentrations should be determined by the end user.
<b>Molecular weight:</b>	80-100kDa
<b>Cellular localization:</b>	cytoplasmicThe cell membrane
<b>Form:</b>	Lyophilized or Liquid
<b>Concentration:</b>	1mg/ml
<b>immunogen:</b>	KLH conjugated synthetic peptide derived from human ECE2:601-700/883
<b>Lsotype:</b>	IgG
<b>Purification:</b>	affinity purified by Protein A
<b>Storage Buffer:</b>	0.01M TBS(pH7.4) with 1% BSA, 0.03% Proclin300 and 50% Glycerol.
<b>Storage:</b>	Store at -20 °C for one year. Avoid repeated freeze/thaw cycles. The lyophilized antibody is stable at room temperature for at least one month and for greater than a year when kept at -20°C. When reconstituted in sterile pH 7.4 0.01M PBS or diluent of antibody the antibody is stable for at least two weeks at 2-4 °C.
<b>PubMed:</b>	<a href="#">PubMed</a>
<b>Product Detail:</b>	Endothelin-converting enzyme 2 (ECE2) converts big endothelin-1 to endothelin-1. Also involved in the processing of various neuroendocrine peptides, including neurotensin, angiotensin I, substance P, proenkephalin-derived peptides, and prodynorphin-derived peptides. May limit beta-amyloid peptide accumulation in brain. May also have methyltransferase activity. Expressed at high levels in central nervous system. Expressed in adrenal glands, ovary and uterus, and at low levels in heart.

**Subcellular Location:**

Golgi apparatus membrane; Single-pass type II membrane protein (By similarity).  
Cytoplasmic granule membrane; Single-pass type II membrane protein (By similarity).

**Tissue Specificity:**

Expressed in brain. Strongly down-regulated in inferior parietal lobe from Alzheimer disease patients (at protein level).

**Similarity:**

In the N-terminal section; belongs to the methyltransferase superfamily.

In the C-terminal section; belongs to the peptidase M13 family.

**SWISS:**

O60344

**Gene ID:**

9718

**Database links:**

[Entrez Gene: 281134](#)Cow

[Entrez Gene: 9718](#)Human

[Oimim: 610145](#)Human

[SwissProt: Q10711](#)Cow

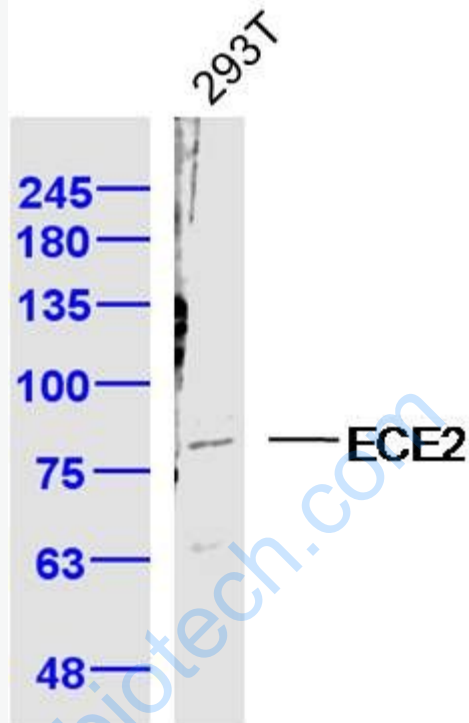
[SwissProt: O60344](#)Human

[Unigene: 146161](#)Human

**Important Note:**

This product as supplied is intended for research use only, not for use in human, therapeutic or diagnostic applications.

Picture:



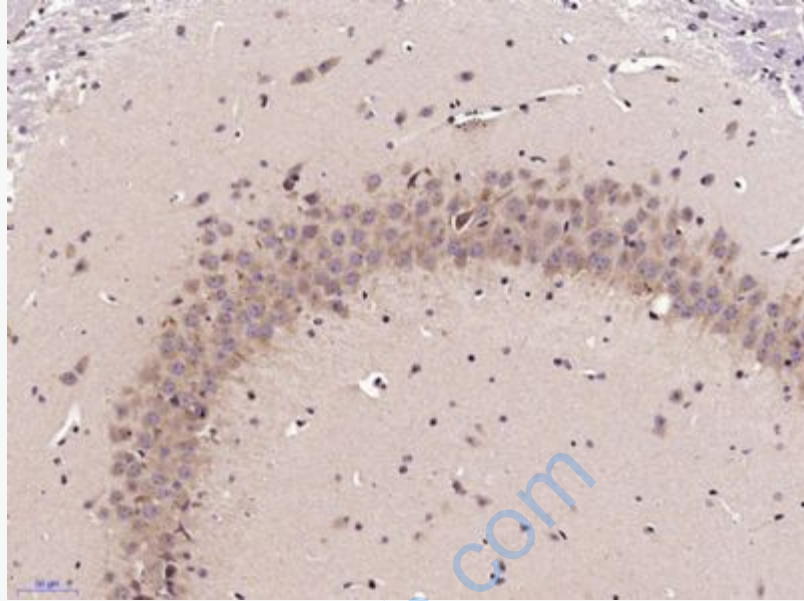
Sample: 293T Cell (Human) Lysate at 40 ug

Primary: Anti-ECE2 (SL1753R) at 1/300 dilution

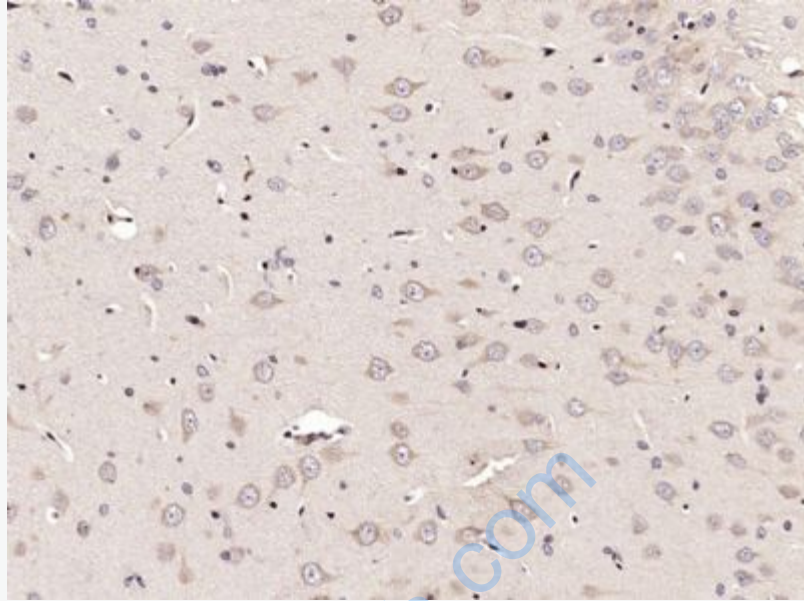
Secondary: IRDye800CW Goat Anti-Rabbit IgG at 1/20000 dilution

Predicted band size: 80-100 kD

Observed band size: 80 kD



Paraformaldehyde-fixed, paraffin embedded (Mouse brain); Antigen retrieval by microwave in sodium citrate buffer (pH6.0) ; Block endogenous peroxidase by 3% hydrogen peroxide for 30 minutes; Blocking buffer (3% BSA) at RT for 30min; Antibody incubation with (ECE2) Polyclonal Antibody, Unconjugated (SL1753R) at 1:400 overnight at 4°C, followed by conjugation to the secondary antibody (labeled with HRP) and DAB staining.



Paraformaldehyde-fixed, paraffin embedded (Rat brain); Antigen retrieval by microwave in sodium citrate buffer (pH6.0) ; Block endogenous peroxidase by 3% hydrogen peroxide for 30 minutes; Blocking buffer (3% BSA) at RT for 30min; Antibody incubation with (ECE2) Polyclonal Antibody, Unconjugated (SL1753R) at 1:400 overnight at 4°C, followed by conjugation to the secondary antibody (labeled with HRP) and DAB staining.