



Rabbit Anti-HLA F antibody

SL17544R

Product Name:	HLA F
Chinese Name:	组织相容性抗原HLAF抗体
Alias:	CDA12; HLA 5.4; HLA class I histocompatibility antigen, alpha chain F; HLA class I histocompatibility antigen, alpha chain F; HLA class I molecule; HLA F antigen; HLA-CDA12; HLA-F; HLAF; HLAF_HUMAN; Leukocyte antigen F; MHC class I antigen F.
Organism Species:	Rabbit
Clonality:	Polyclonal
React Species:	Human,
Applications:	WB=1:500-2000ELISA=1:500-1000IHC-P=1:400-800IHC-F=1:400-800ICC=1:100-500IF=1:100-500 (Paraffin sections need antigen repair) not yet tested in other applications. optimal dilutions/concentrations should be determined by the end user.
Molecular weight:	37kDa
Cellular localization:	The cell membrane
Form:	Lyophilized or Liquid
Concentration:	1mg/ml
immunogen:	KLH conjugated synthetic peptide derived from human HLA F:21-120/346<Extracellular>
Lsotype:	IgG
Purification:	affinity purified by Protein A
Storage Buffer:	0.01M TBS(pH7.4) with 1% BSA, 0.03% Proclin300 and 50% Glycerol.
Storage:	Store at -20 °C for one year. Avoid repeated freeze/thaw cycles. The lyophilized antibody is stable at room temperature for at least one month and for greater than a year when kept at -20°C. When reconstituted in sterile pH 7.4 0.01M PBS or diluent of antibody the antibody is stable for at least two weeks at 2-4 °C.
PubMed:	PubMed
Product Detail:	This gene belongs to the HLA class I heavy chain paralogues. It encodes a non-classical heavy chain that forms a heterodimer with a beta-2 microglobulin light chain, with the heavy chain anchored in the membrane. Unlike most other HLA heavy chains, this

molecule is localized in the endoplasmic reticulum and Golgi apparatus, with a small amount present at the cell surface in some cell types. It contains a divergent peptide-binding groove, and is thought to bind a restricted subset of peptides for immune presentation. This gene exhibits few polymorphisms. Multiple transcript variants encoding different isoforms have been found for this gene. These variants lack a coding exon found in transcripts from other HLA paralogues due to an altered splice acceptor site, resulting in a shorter cytoplasmic domain. [provided by RefSeq, Jul 2008]

Function:

Involved in the presentation of foreign antigens to the immune system.

Subunit:

Heterodimer of an alpha chain and a beta chain (beta-2-microglobulin).

Subcellular Location:

Membrane.

Similarity:

Belongs to the MHC class I family.

Contains 1 Ig-like C1-type (immunoglobulin-like) domain.

SWISS:

P30511

Gene ID:

3134

Database links:

[Entrez Gene: 3134](#) Human

[Entrez Gene: 499400](#) Rat

[Omim: 143110](#) Human

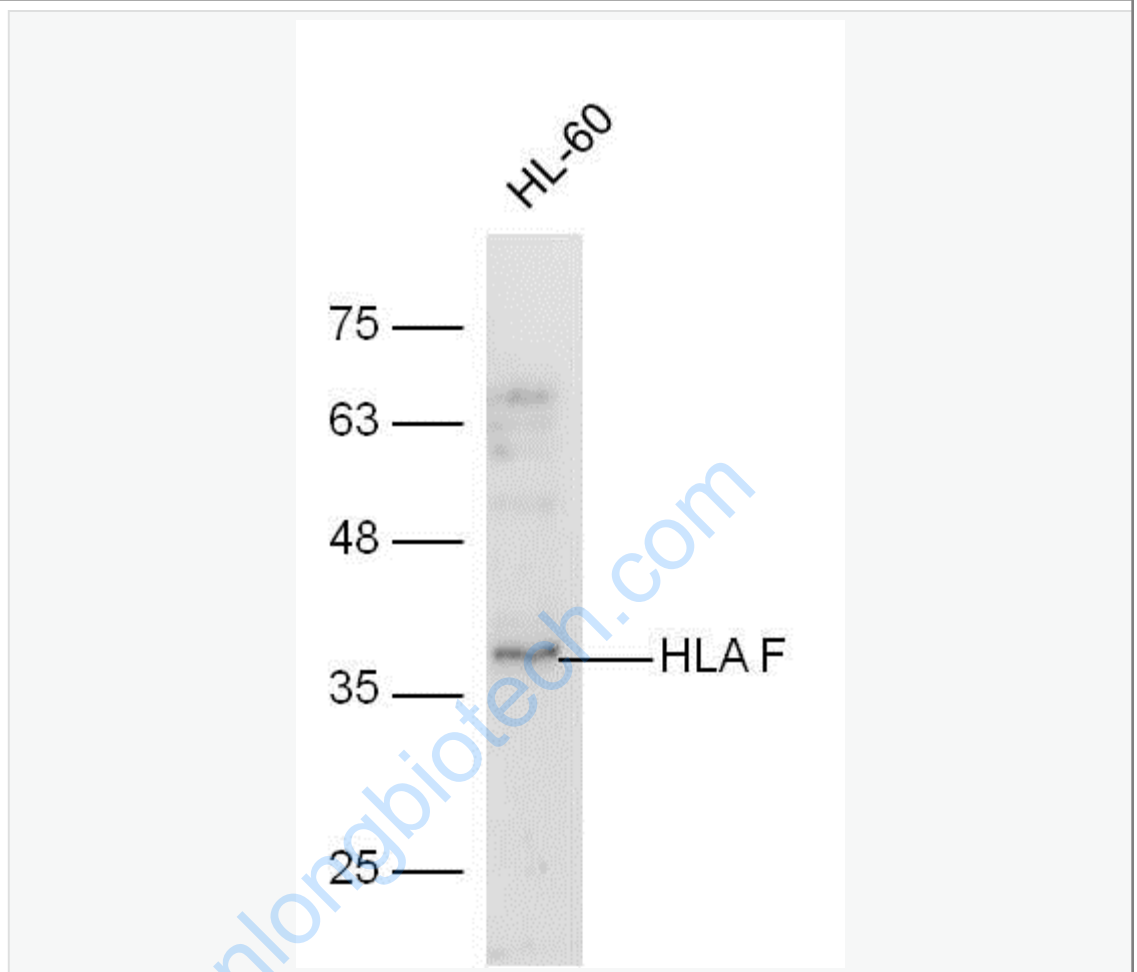
[SwissProt: P30511](#) Human

[Unigene: 519972](#) Human

Important Note:

This product as supplied is intended for research use only, not for use in human, therapeutic or diagnostic applications.

Picture:



Sample:

HL-60 Cell (Human) Lysate at 30 ug

Primary: Anti-HLA F (SL17544R) at 1/300 dilution

Secondary: IRDye800CW Goat Anti-Rabbit IgG at 1/20000 dilution

Predicted band size: 37 kD

Observed band size: 37 kD