



## Rabbit Anti-OR52E2 antibody

SL17599R

<b>Product Name:</b>	OR52E2
<b>Chinese Name:</b>	嗅觉受体52E2抗体
<b>Alias:</b>	O52E2_HUMAN; Olfactory receptor 52E2; olfactory receptor, family 10, subfamily AC, member 1 pseudogene; olfactory receptor, family 52, subfamily E, member 2; OR52E2.
<b>Organism Species:</b>	Rabbit
<b>Clonality:</b>	Polyclonal
<b>React Species:</b>	Human,
<b>Applications:</b>	WB=1:500-2000ELISA=1:500-1000IHC-P=1:400-800IHC-F=1:400-800ICC=1:100-500IF=1:100-500 (Paraffin sections need antigen repair) not yet tested in other applications. optimal dilutions/concentrations should be determined by the end user.
<b>Molecular weight:</b>	37kDa
<b>Cellular localization:</b>	The cell membrane
<b>Form:</b>	Lyophilized or Liquid
<b>Concentration:</b>	1mg/ml
<b>immunogen:</b>	KLH conjugated synthetic peptide derived from human OR52E2:211-310/325<Extracellular>
<b>Lsotype:</b>	IgG
<b>Purification:</b>	affinity purified by Protein A
<b>Storage Buffer:</b>	0.01M TBS(pH7.4) with 1% BSA, 0.03% Proclin300 and 50% Glycerol.
<b>Storage:</b>	Store at -20 °C for one year. Avoid repeated freeze/thaw cycles. The lyophilized antibody is stable at room temperature for at least one month and for greater than a year when kept at -20°C. When reconstituted in sterile pH 7.4 0.01M PBS or diluent of antibody the antibody is stable for at least two weeks at 2-4 °C.
<b>PubMed:</b>	<a href="#">PubMed</a>
<b>Product Detail:</b>	Olfactory receptors interact with odorant molecules in the nose, to initiate a neuronal response that triggers the perception of a smell. The olfactory receptor proteins are members of a large family of G-protein-coupled receptors (GPCR) arising from single coding-exon genes. Olfactory receptors share a 7-transmembrane domain structure with

many neurotransmitter and hormone receptors and are responsible for the recognition and G protein-mediated transduction of odorant signals. The olfactory receptor gene family is the largest in the genome. The nomenclature assigned to the olfactory receptor genes and proteins for this organism is independent of other organisms. [provided by RefSeq, Jul 2008]

**Function:**

Odorant receptor.

**Subcellular Location:**

Cell membrane.

**Similarity:**

Belongs to the G-protein coupled receptor 1 family.

**SWISS:**

Q8NGJ4

**Gene ID:**

119678

**Database links:**

[Entrez Gene: 119678](#) Human

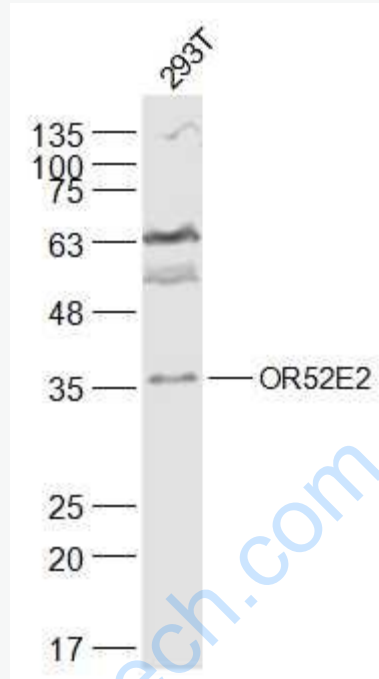
[SwissProt: Q8NGJ4](#) Human

[Unigene: 553557](#) Human

**Important Note:**

This product as supplied is intended for research use only, not for use in human, therapeutic or diagnostic applications.

Picture:



Sample:

293T(Human) Cell Lysate at 30 ug

Primary: Anti-OR52E2 (SL17599R) at 1/300 dilution

Secondary: IRDye800CW Goat Anti-Rabbit IgG at 1/20000 dilution

Predicted band size: 37 kD

Observed band size: 37 kD