



Rabbit Anti-METTTL3 antibody

SL17609R

Product Name:	METTTL3
Chinese Name:	甲基转移酶样蛋白3抗体
Alias:	IME4; Methyltransferase like protein 3; Methyltransferase-like protein 3; Methyltransferase like 3; METTTL3; MT-A70; MTA70; MTA70_HUMAN; N6 adenosine methyltransferase 70 kDa subunit; N6-adenosine-methyltransferase 70 kDa subunit.
Organism Species:	Rabbit
Clonality:	Polyclonal
React Species:	Human,Mouse,Rat,Pig,Cow,Rabbit,Sheep,
Applications:	WB=1:500-2000ELISA=1:500-1000IHC-P=1:400-800IHC-F=1:400-800ICC=1:100-500IF=1:100-500 (Paraffin sections need antigen repair) not yet tested in other applications. optimal dilutions/concentrations should be determined by the end user.
Molecular weight:	64kDa
Cellular localization:	The nucleus
Form:	Lyophilized or Liquid
Concentration:	1mg/ml
immunogen:	KLH conjugated synthetic peptide derived from human METTTL3:2-100/580
Lsotype:	IgG
Purification:	affinity purified by Protein A
Storage Buffer:	0.01M TBS(pH7.4) with 1% BSA, 0.03% Proclin300 and 50% Glycerol.
Storage:	Store at -20 °C for one year. Avoid repeated freeze/thaw cycles. The lyophilized antibody is stable at room temperature for at least one month and for greater than a year when kept at -20°C. When reconstituted in sterile pH 7.4 0.01M PBS or diluent of antibody the antibody is stable for at least two weeks at 2-4 °C.
PubMed:	PubMed
Product Detail:	This gene encodes the 70 kDa subunit of MT-A which is part of N6-adenosine-methyltransferase. This enzyme is involved in the posttranscriptional methylation of internal adenosine residues in eukaryotic mRNAs, forming N6-methyladenosine. [provided by RefSeq, Jul 2008]

Function:

N6-methyltransferase that methylates adenosine residues of some mRNAs. N6-methyladenosine (m6A), which is present at internal sites of some mRNAs, may play a role in the efficiency of mRNA splicing, transport or translation.

Subcellular Location:

Nucleus speckle. Colocalizes with speckles in interphase nuclei. Suggesting that it may be associated with nuclear pre-mRNA splicing components.

Tissue Specificity:

Widely expressed at low level. Expressed in spleen, thymus, prostate, testis, ovary, small intestine, colon and peripheral blood leukocytes.

Post-translational modifications:

Phosphorylated upon DNA damage, probably by ATM or ATR.

Similarity:

Belongs to the MT-A70-like family.

SWISS:

Q86U44

Gene ID:

56339

Database links:

[Entrez Gene: 56339](#) Human

[Entrez Gene: 56335](#) Mouse

[Entrez Gene: 361035](#) Rat

[Omim: 612472](#) Human

[SwissProt: Q86U44](#) Human

[SwissProt: Q8C3P7](#) Mouse

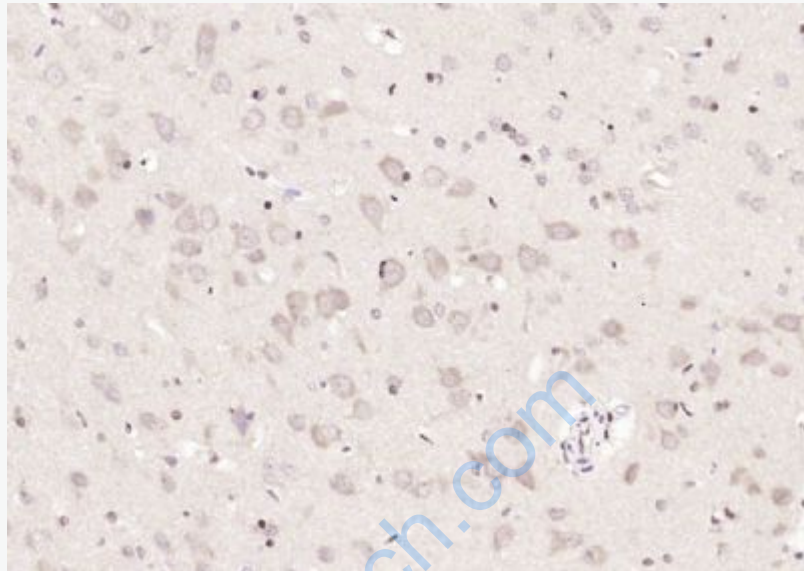
[Unigene: 168799](#) Human

[Unigene: 271759](#) Mouse

Important Note:

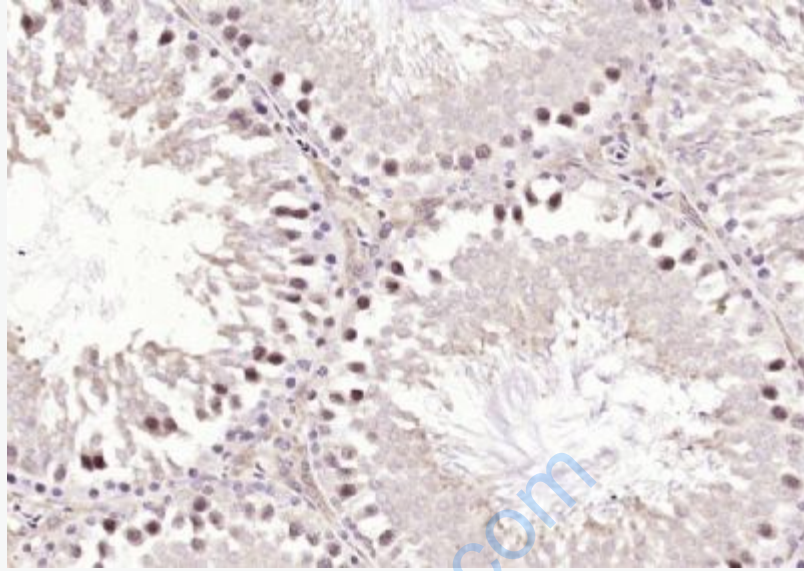
This product as supplied is intended for research use only, not for use in human,

therapeutic or diagnostic applications.



Picture:

Paraformaldehyde-fixed, paraffin embedded (rat brain); Antigen retrieval by boiling in sodium citrate buffer (pH6.0) for 15min; Block endogenous peroxidase by 3% hydrogen peroxide for 20 minutes; Blocking buffer (normal goat serum) at 37°C for 30min; Antibody incubation with (METTL3) Polyclonal Antibody, Unconjugated (SL17609R) at 1:200 overnight at 4°C, followed by operating according to SP Kit(Rabbit) (sp-0023) instructions and DAB staining.



Paraformaldehyde-fixed, paraffin embedded (rat testis); Antigen retrieval by boiling in sodium citrate buffer (pH6.0) for 15min; Block endogenous peroxidase by 3% hydrogen peroxide for 20 minutes; Blocking buffer (normal goat serum) at 37°C for 30min; Antibody incubation with (METTL3) Polyclonal Antibody, Unconjugated (SL17609R) at 1:200 overnight at 4°C, followed by operating according to SP Kit(Rabbit) (sp-0023) instructions and DAB staining.