

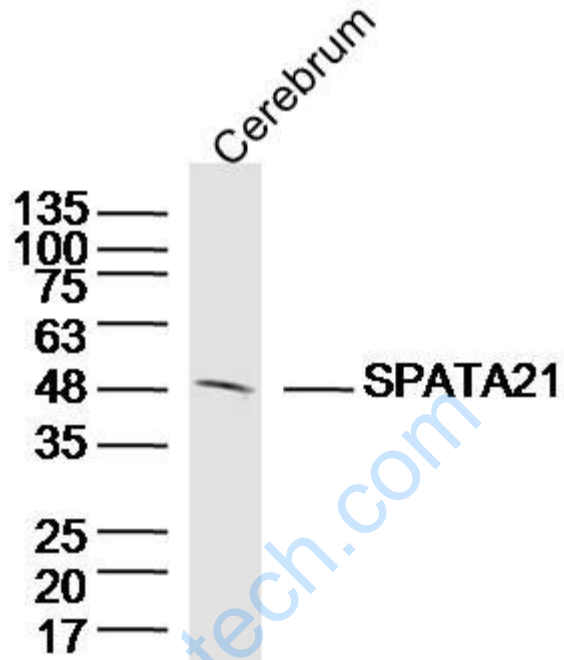


Rabbit Anti-SPATA21 antibody

SL17626R

Product Name:	SPATA21
Chinese Name:	精子发生相关蛋白21抗体
Alias:	RP11-430L17.3; Spata21; Spergen 2; Spergen2; Spermatogenesis-associated protein 21; SPT21_HUMAN.
Organism Species:	Rabbit
Clonality:	Polyclonal
React Species:	Human,Mouse,Rat,Horse,
Applications:	WB=1:500-2000ELISA=1:500-1000ICC=1:100-500IF=1:100-500 not yet tested in other applications. optimal dilutions/concentrations should be determined by the end user.
Molecular weight:	52kDa
Cellular localization:	Extracellular matrix
Form:	Lyophilized or Liquid
Concentration:	1mg/ml
immunogen:	KLH conjugated synthetic peptide derived from human SPATA21:181-280/469
Lsotype:	IgG
Purification:	affinity purified by Protein A
Storage Buffer:	0.01M TBS(pH7.4) with 1% BSA, 0.03% Proclin300 and 50% Glycerol.
Storage:	Store at -20 °C for one year. Avoid repeated freeze/thaw cycles. The lyophilized antibody is stable at room temperature for at least one month and for greater than a year when kept at -20°C. When reconstituted in sterile pH 7.4 0.01M PBS or diluent of antibody the antibody is stable for at least two weeks at 2-4 °C.
PubMed:	PubMed
Product Detail:	

Picture:



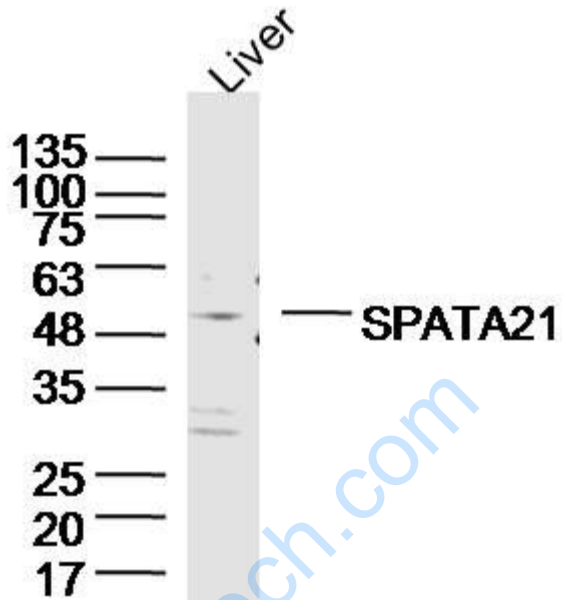
Sample: Cerebrum (Mouse) Lysate at 40 ug

Primary: Anti-SPATA21(SL17626R)at 1/300 dilution

Secondary: IRDye800CW Goat Anti-Rabbit IgG at 1/20000 dilution

Predicted band size: 52kD

Observed band size: 50kD



Sample: Liver (Mouse) Lysate at 40 ug

Primary: Anti-SPATA21(SL17626R)at 1/300 dilution

Secondary: IRDye800CW Goat Anti-Rabbit IgG at 1/20000 dilution

Predicted band size: 52kD

Observed band size: 52kD