



Rabbit Anti-SPATA15/SPATC1 antibody

SL17636R

Product Name:	SPATA15/SPATC1
Chinese Name:	精子发生相关蛋白15抗体
Alias:	1700084J23Rik; MGC144830; MGC61633; SPATA15; Spatc1; SPERI_HUMAN; Speriolin; Spermatogenesis and centriole associated 1; Spermatogenesis and centriole-associated protein 1; Spermatogenesis-associated protein 15; Spermatogenic cell specific Cdc20 binding protein; Spermatogenic cell-specific Cdc20-binding protein.
Organism Species:	Rabbit
Clonality:	Polyclonal
React Species:	Human,Mouse,Rat,Cow,Horse,Rabbit,Sheep,
Applications:	WB=1:500-2000ELISA=1:500-1000IHC-P=1:400-800IHC-F=1:400-800ICC=1:100-500IF=1:100-500 (Paraffin sections need antigen repair) not yet tested in other applications. optimal dilutions/concentrations should be determined by the end user.
Molecular weight:	62kDa
Cellular localization:	cytoplasmic
Form:	Lyophilized or Liquid
Concentration:	1mg/ml
immunogen:	KLH conjugated synthetic peptide derived from human SPATA15/SPATC1:1-100/591
Lsotype:	IgG
Purification:	affinity purified by Protein A
Storage Buffer:	0.01M TBS(pH7.4) with 1% BSA, 0.03% Proclin300 and 50% Glycerol.
Storage:	Store at -20 °C for one year. Avoid repeated freeze/thaw cycles. The lyophilized antibody is stable at room temperature for at least one month and for greater than a year when kept at -20°C. When reconstituted in sterile pH 7.4 0.01M PBS or diluent of antibody the antibody is stable for at least two weeks at 2-4 °C.
PubMed:	PubMed
Product Detail:	SPATA15 is a 591 amino acid cytoplasmic protein expressed in testis that is part of a complex that includes p55 CDC, Cdc27. The gene encoding Speriolin is located on human chromosome 8, which consists of nearly 146 million base pairs, houses more than 800 genes and is associated with a variety of diseases and malignancies.

Schizophrenia, bipolar disorder, Trisomy 8, Pfeiffer syndrome, congenital hypothyroidism, Waardenburg syndrome and some leukemias and lymphomas are thought to occur as a result of defects in specific genes that map to chromosome 8.

Subunit:

Found in a complex with CDC20, CDC27 and TUBG1. Interacts with CDC20 (By similarity).

Subcellular Location:

Cytoplasm. Cytoplasm > cytoskeleton > centrosome. Colocalizes with the centrosomal pericentrin protein PCNT1.

Tissue Specificity:

Detected only in testis.

SWISS:

Q76KD6

Gene ID:

375686

Database links:

[Entrez Gene: 375686](#) Human

[Entrez Gene: 74281](#) Mouse

[Omim: 610874](#) Human

[SwissProt: Q76KD6](#) Human

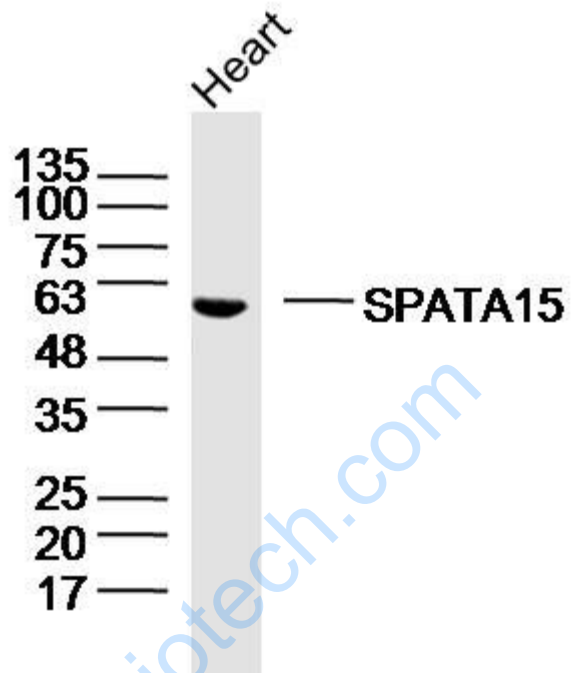
[SwissProt: Q148B6](#) Mouse

[Unigene: 97726](#) Human

Important Note:

This product as supplied is intended for research use only, not for use in human, therapeutic or diagnostic applications.

Picture:



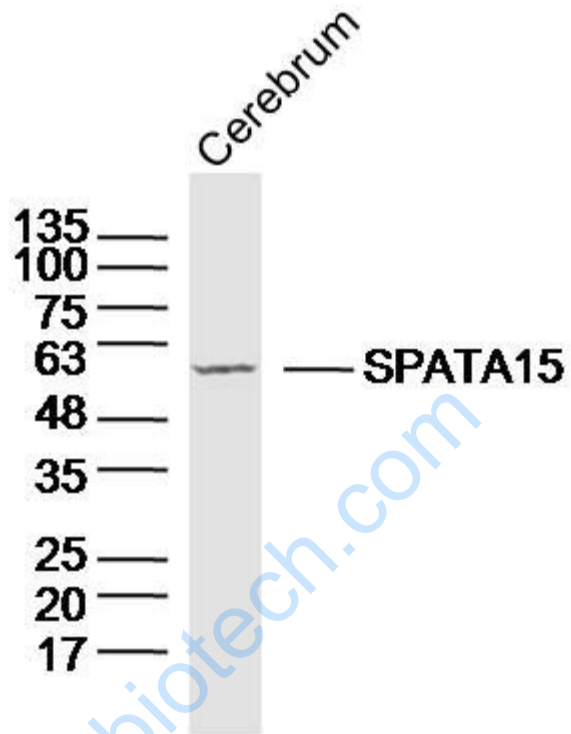
Sample: Heart (Mouse) Lysate at 40 ug

Primary: Anti-SPATA15/SPATC1(SL17636R) at 1/300 dilution

Secondary: IRDye800CW Goat Anti-Rabbit IgG at 1/20000 dilution

Predicted band size: 62kD

Observed band size: 62kD



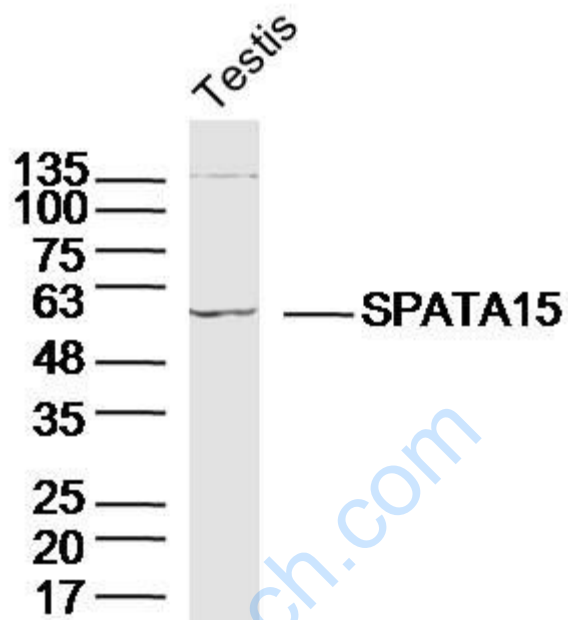
Sample: Cerebrum (Mouse) Lysate at 40 ug

Primary: Anti-SPATA15/SPATC1(SL17636R) at 1/300 dilution

Secondary: IRDye800CW Goat Anti-Rabbit IgG at 1/20000 dilution

Predicted band size: 62kD

Observed band size: 62kD



Sample: Testis (Mouse) Lysate at 40 ug

Primary: Anti-SPATA15/SPATC1(SL17636R) at 1/300 dilution

Secondary: IRDye800CW Goat Anti-Rabbit IgG at 1/20000 dilution

Predicted band size: 62kD

Observed band size: 62kD