



Rabbit Anti-SPATS1 antibody

SL17637R

Product Name:	SPATS1
Chinese Name:	精子发生相关蛋白15抗体
Alias:	Daip2; Ddip; Dvl2 DEP domain interacting protein; SPAS1_HUMAN; SPATA8; SPATS 1; SPATS1; spermatogenesis associated serine rich protein 1; Spermatogenesis associated, serine rich 1; Spermatogenesis-associated serine-rich protein 1; SRSP1.
Organism Species:	Rabbit
Clonality:	Polyclonal
React Species:	Human,Mouse,Rat,Dog,Horse,
Applications:	WB=1:500-2000ELISA=1:500-1000IHC-P=1:400-800IHC-F=1:400-800ICC=1:100-500IF=1:100-500 (Paraffin sections need antigen repair) not yet tested in other applications. optimal dilutions/concentrations should be determined by the end user.
Molecular weight:	34kDa
Form:	Lyophilized or Liquid
Concentration:	1mg/ml
immunogen:	KLH conjugated synthetic peptide derived from human SPATS1:151-250/300
Lsotype:	IgG
Purification:	affinity purified by Protein A
Storage Buffer:	0.01M TBS(pH7.4) with 1% BSA, 0.03% Proclin300 and 50% Glycerol.
Storage:	Store at -20 °C for one year. Avoid repeated freeze/thaw cycles. The lyophilized antibody is stable at room temperature for at least one month and for greater than a year when kept at -20°C. When reconstituted in sterile pH 7.4 0.01M PBS or diluent of antibody the antibody is stable for at least two weeks at 2-4 °C.
PubMed:	PubMed
Product Detail:	SRSP1 is a 300 amino acid protein that exists as two alternatively spliced isoforms and may play a role in spermatogenesis. The gene encoding SRSP1 maps to human chromosome 6, which contains 170 million base pairs and comprises nearly 6% of the human genome. Deletion of a portion of the q arm of chromosome 6 is associated with early onset intestinal cancer, suggesting the presence of a cancer susceptibility locus. Additionally, Porphyria cutanea tarda, Parkinson's disease, Stickler syndrome and a

susceptibility to bipolar disorder are all associated with genes that map to chromosome 6.

SWISS:
Q496A3

Gene ID:
221409

Database links:

[Entrez Gene: 221409](#) Human

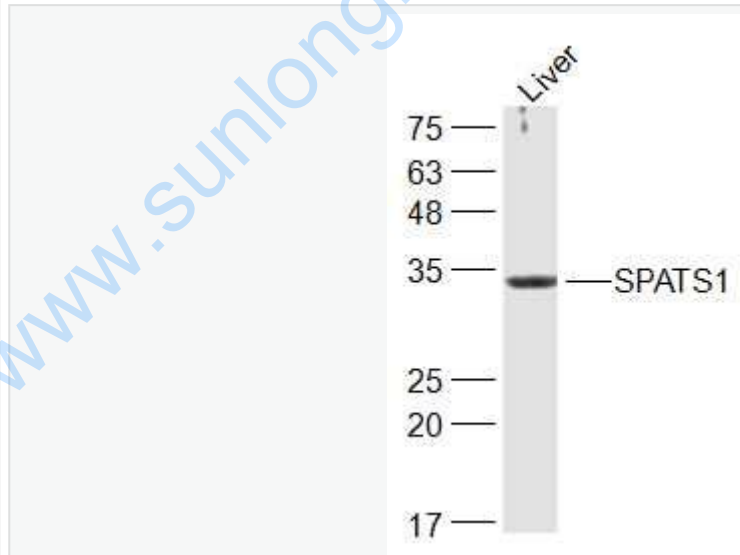
[SwissProt: Q496A3](#) Human

[Unigene: 135283](#) Human

Important Note:

This product as supplied is intended for research use only, not for use in human, therapeutic or diagnostic applications.

Picture:



Sample:

Liver (Mouse) Lysate at 40 ug

Primary: Anti-SPATS1 (SL17637R) at 1/300 dilution

Secondary: IRDye800CW Goat Anti-Rabbit IgG at 1/20000 dilution

	<p>Predicted band size: 34 kD</p>
--	-----------------------------------

	<p>Observed band size: 34kD</p>
--	---------------------------------

www.sunlongbiotech.com