



## Rabbit Anti-phospho-MNK1 (Thr385) antibody

SL17695R

<b>Product Name:</b>	phospho-MNK1 (Thr385)
<b>Chinese Name:</b>	磷酸化MAP激酶相互作用丝氨酸/苏氨酸激酶1抗体
<b>Alias:</b>	MNK1 (phospho T385); p-MNK1 (phospho T385); MAP kinase interacting kinase 1; MAP kinase interacting serine/threonine kinase 1; MAP kinase signal integrating kinase 1; MAP kinase signal-integrating kinase 1; MAP kinase-interacting serine/threonine-protein kinase 1; MAPK signal integrating kinase 1; MITOGEN-ACTIVATED PROTEIN KINASE-INTERACTING SERINE/THREONINE KINASE 1; MKNK1; MKNK1 HUMAN; MNK 1; Mnk1.
<b>Organism Species:</b>	Rabbit
<b>Clonality:</b>	Polyclonal
<b>React Species:</b>	Human,
<b>Applications:</b>	ELISA=1:500-1000IHC-P=1:400-800IHC-F=1:400-800ICC=1:100-500IF=1:100-500 (Paraffin sections need antigen repair) not yet tested in other applications. optimal dilutions/concentrations should be determined by the end user.
<b>Molecular weight:</b>	51kDa
<b>Cellular localization:</b>	The nucleuscytoplasmic
<b>Form:</b>	Lyophilized or Liquid
<b>Concentration:</b>	1mg/ml
<b>immunogen:</b>	KLH conjugated synthesised phosphopeptide derived from human MNK1 around the phosphorylation site of Thr385:LP(p-T)P
<b>Lsotype:</b>	IgG
<b>Purification:</b>	affinity purified by Protein A
<b>Storage Buffer:</b>	0.01M TBS(pH7.4) with 1% BSA, 0.03% Proclin300 and 50% Glycerol.
<b>Storage:</b>	Store at -20 °C for one year. Avoid repeated freeze/thaw cycles. The lyophilized antibody is stable at room temperature for at least one month and for greater than a year when kept at -20°C. When reconstituted in sterile pH 7.4 0.01M PBS or diluent of antibody the antibody is stable for at least two weeks at 2-4 °C.
<b>PubMed:</b>	<a href="#">PubMed</a>

This gene encodes a Ser/Thr protein kinase that interacts with, and is activated by ERK1 and p38 mitogen-activated protein kinases, and thus may play a role in the response to environmental stress and cytokines. This kinase may also regulate transcription by phosphorylating eIF4E via interaction with the C-terminal region of eIF4G. Alternatively spliced transcript variants have been noted for this gene. [provided by RefSeq, Jan 2012]

**Function:**

May play a role in the response to environmental stress and cytokines. Appears to regulate transcription by phosphorylating EIF4E, thus increasing the affinity of this protein for the 7-methylguanosine-containing mRNA cap.

**Subcellular Location:**

Cytoplasm and Cytoplasm. Nucleus.

**Tissue Specificity:**

Ubiquitous.

**Post-translational modifications:**

Dual phosphorylation of Thr-250 and Thr-255 activates the kinase. Phosphorylation of Thr-385 activates the kinase.

**Similarity:**

Belongs to the protein kinase superfamily.  
CAMK Ser/Thr protein kinase family.  
Contains 1 protein kinase domain.

**SWISS:**

Q9BUB5

**Gene ID:**

8569

**Database links:**

[Entrez Gene: 8569](#) Human

[Omim: 606724](#) Human

[SwissProt: Q9BUB5](#) Human

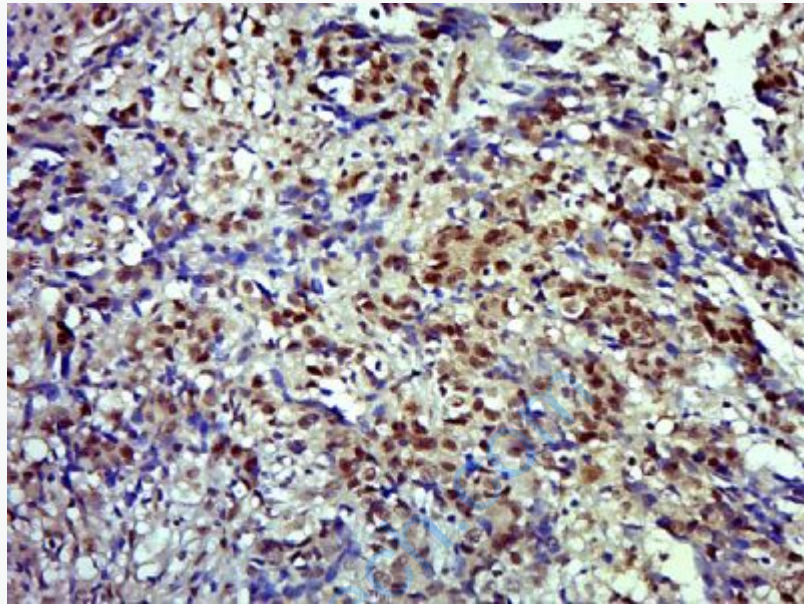
[Unigene: 371594](#) Human

**Important Note:**

This product as supplied is intended for research use only, not for use in human,

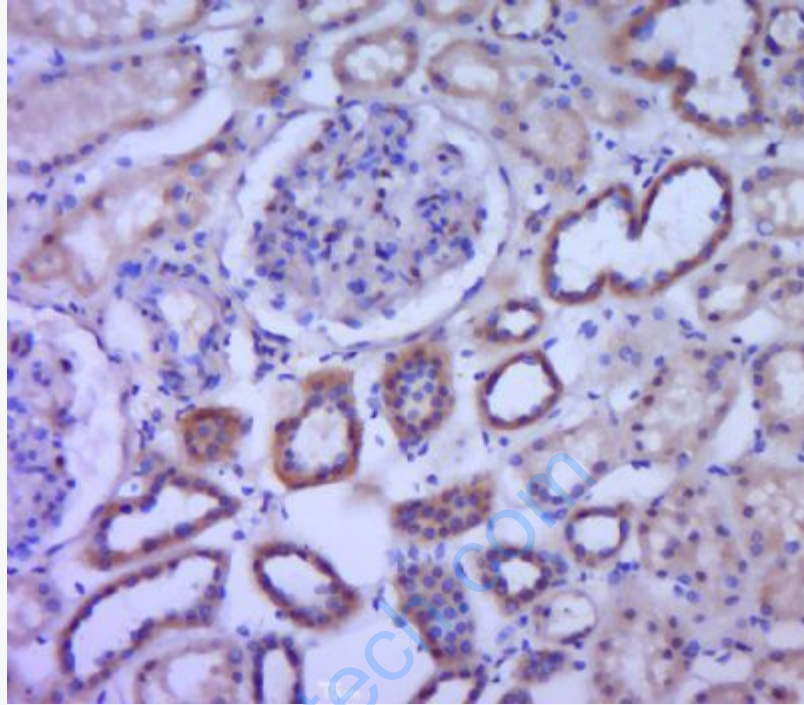
**Product Detail:**

therapeutic or diagnostic applications.



**Picture:**

Paraformaldehyde-fixed, paraffin embedded (Human colon carcinoma); Antigen retrieval by boiling in sodium citrate buffer (pH6.0) for 15min; Block endogenous peroxidase by 3% hydrogen peroxide for 20 minutes; Blocking buffer (normal goat serum) at 37°C for 30min; Antibody incubation with (phospho-MNK1 (Thr385)) Polyclonal Antibody, Unconjugated (SL17695R) at 1:500 overnight at 4°C, followed by a conjugated secondary (sp-0023) for 20 minutes and DAB staining.



Paraformaldehyde-fixed, paraffin embedded (human kidney tissue); Antigen retrieval by boiling in sodium citrate buffer (pH6.0) for 15min; Block endogenous peroxidase by 3% hydrogen peroxide for 20 minutes; Blocking buffer (normal goat serum) at 37°C for 30min; Antibody incubation with (p-MNK1 (Thr385)) Polyclonal Antibody, Unconjugated (SL17695R) at 1:400 overnight at 4°C, followed by a conjugated secondary (sp-0023) for 20 minutes and DAB staining.