



## Rabbit Anti-MRGPR A antibody

SL17756R

<b>Product Name:</b>	MRGPRA
<b>Chinese Name:</b>	腺嘌呤受体抗体
<b>Alias:</b>	Adenine receptor; G protein coupled receptor rc 56 1 3; Mas related G protein coupled receptor member A; Mas related gene A; MGC108580; Mrg A; Mrga 10; MrgA; Mrgpra; Nuclear receptor MrgA10 RF amide G protein coupled receptor.
<b>Organism Species:</b>	Rabbit
<b>Clonality:</b>	Polyclonal
<b>React Species:</b>	Mouse,Rat,
<b>Applications:</b>	WB=1:500-2000ELISA=1:500-1000IHC-P=1:400-800IHC-F=1:400-800ICC=1:100-500IF=1:100-500 (Paraffin sections need antigen repair) not yet tested in other applications. optimal dilutions/concentrations should be determined by the end user.
<b>Molecular weight:</b>	34kDa
<b>Cellular localization:</b>	The cell membrane
<b>Form:</b>	Lyophilized or Liquid
<b>Concentration:</b>	1mg/ml
<b>immunogen:</b>	KLH conjugated synthetic peptide derived from rat MRGPRA:1-100/304<Extracellular>
<b>Lsotype:</b>	IgG
<b>Purification:</b>	affinity purified by Protein A
<b>Storage Buffer:</b>	0.01M TBS(pH7.4) with 1% BSA, 0.03% Proclin300 and 50% Glycerol.
<b>Storage:</b>	Store at -20 °C for one year. Avoid repeated freeze/thaw cycles. The lyophilized antibody is stable at room temperature for at least one month and for greater than a year when kept at -20°C. When reconstituted in sterile pH 7.4 0.01M PBS or diluent of antibody the antibody is stable for at least two weeks at 2-4 °C.
<b>PubMed:</b>	<a href="#">PubMed</a>
<b>Product Detail:</b>	MRGPRA, Mas-related G-protein coupled receptor member A, is an orphan receptor activated by a subset of RFamide-family neuropeptides such as FLRF-amide and FMRF-amide. It mediates its action by association with G proteins that activate a phosphatidylinositol-calcium second messenger system. Its effect is mediated by G(q)

and G(11) proteins and it may regulate the function of nociceptive neurons by modulation of pain perception.

**Function:**

] Orphan receptor activated by a subset of RFamide-family neuropeptides such as FLRF-amide and FMRF-amide. Mediates its action by association with G proteins that activate a phosphatidylinositol-calcium second messenger system. Its effect is mediated by G(q) and G(11) proteins. May regulate the function of nociceptive neurons by modulation of pain perception (By similarity).

**Subcellular Location:**

Cell membrane; Multi-pass membrane protein.

**Tissue Specificity:**

Expressed in a subset of IB4-positive small diameter nociceptive dorsal root neurons.

**Similarity:**

Expressed in a subset of IB4-positive small diameter nociceptive dorsal root neurons.

**SWISS:**

Q7TN49

**Gene ID:**

252960

**Database links:**

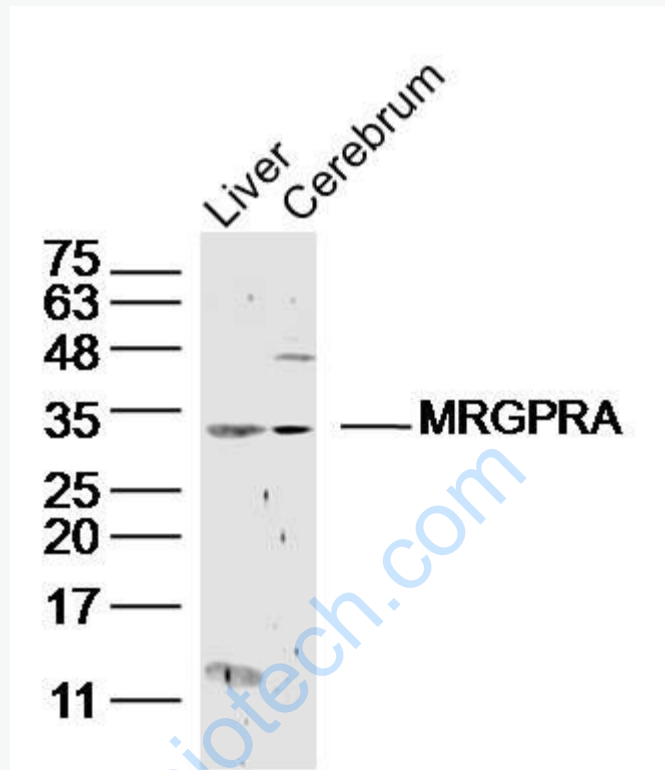
[Entrez Gene: 252960](#) Rat

[SwissProt: Q7TN49](#) Rat

**Important Note:**

This product as supplied is intended for research use only, not for use in human, therapeutic or diagnostic applications.

Picture:



Sample:

Liver (Mouse) Lysate at 40 ug

Cerebrum (Mouse) Lysate at 40 ug

Primary: Anti-MRGPRA (SL17756R) at 1/300 dilution

Secondary: IRDye800CW Goat Anti-Rabbit IgG at 1/20000 dilution

Predicted band size: 34 kD

Observed band size: 34 kD