



Rabbit Anti-MRGX3 antibody

SL17762R

Product Name:	MRGX3
Chinese Name:	G protein-coupled receptorMRGX3抗体
Alias:	G protein coupled receptor SNSR1; G protein coupled receptor SNSR2; G protein-coupled receptor MRGX 3; G protein-coupled receptor MRGX3; GPCR; Mas related GPCR member X3; Mas-related G protein coupled MRGX 3; Mas-related G protein coupled MRGX3; Mas-related G-protein coupled receptor member X3; MAS-related GPR, member X3; MRGPRX3; MRGX3; MRGX3_HUMAN; Sensory neuron-specific G-protein coupled receptor 1; Sensory neuron-specific G-protein coupled receptor 1/2; SNSR1; SNSR2.
Organism Species:	Rabbit
Clonality:	Polyclonal
React Species:	Human,
Applications:	ELISA=1:500-1000IHC-P=1:400-800IHC-F=1:400-800ICC=1:100-500IF=1:100-500 (Paraffin sections need antigen repair) not yet tested in other applications. optimal dilutions/concentrations should be determined by the end user.
Molecular weight:	36kDa
Cellular localization:	The cell membrane
Form:	Lyophilized or Liquid
Concentration:	1mg/ml
immunogen:	KLH conjugated synthetic peptide derived from human MRGX3:51-150/322<Extracellular>
Lsotype:	IgG
Purification:	affinity purified by Protein A
Storage Buffer:	0.01M TBS(pH7.4) with 1% BSA, 0.03% Proclin300 and 50% Glycerol.
Storage:	Store at -20 °C for one year. Avoid repeated freeze/thaw cycles. The lyophilized antibody is stable at room temperature for at least one month and for greater than a year when kept at -20°C. When reconstituted in sterile pH 7.4 0.01M PBS or diluent of antibody the antibody is stable for at least two weeks at 2-4 °C.
PubMed:	PubMed

This gene encodes a member of the mas-related/sensory neuron specific subfamily of G protein coupled receptors. The encoded protein may be involved in sensory neuron regulation and in the modulation of pain. [provided by RefSeq, Oct 2009]

Function:

Orphan receptor. Probably involved in the function of nociceptive neurons. May regulate nociceptor function and/or development, including the sensation or modulation of pain. Potently activated by enkephalins.

Subcellular Location:

Cell membrane.

Tissue Specificity:

Uniquely localized in a subset of small dorsal root and trigeminal sensory neurons.

Similarity:

Belongs to the G-protein coupled receptor 1 family. Mas subfamily.

SWISS:

Q96LB0

Gene ID:

117195

Database links:

[Entrez Gene: 117195](#) Human

[Omim: 607229](#) Human

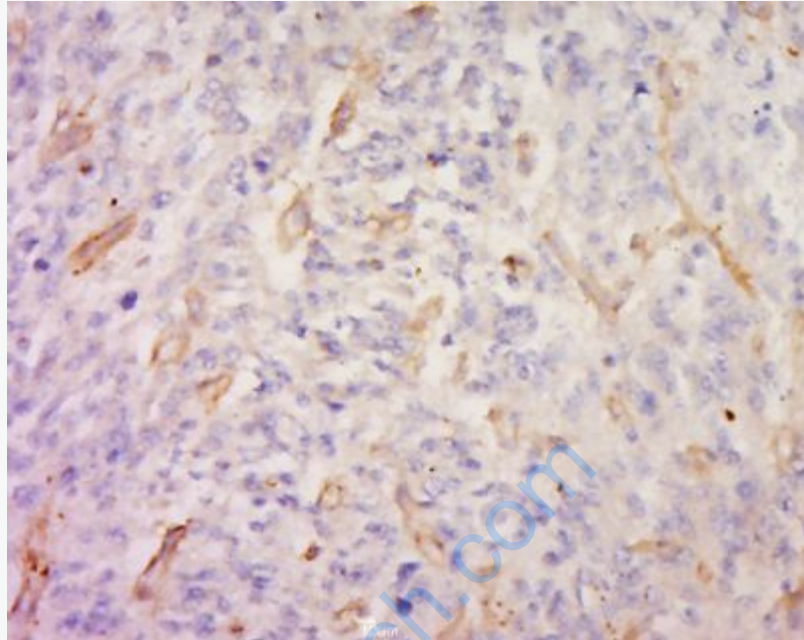
[SwissProt: Q96LB0](#) Human

[Unigene: 380177](#) Human

Important Note:

This product as supplied is intended for research use only, not for use in human, therapeutic or diagnostic applications.

Product Detail:



Picture:

Tissue/cell: human brain tissue; 4% Paraformaldehyde-fixed and paraffin-embedded;
Antigen retrieval: citrate buffer (0.01M, pH 6.0), Boiling bathing for 15min; Block
endogenous peroxidase by 3% Hydrogen peroxide for 30min; Blocking buffer
(normal goat serum,C-0005) at 37°C for 20 min;
Incubation: Anti-MRGX3 Polyclonal Antibody, Unconjugated(SL17762R) 1:500,
overnight at 4°C, followed by conjugation to the secondary antibody(SP-0023) and
DAB(C-0010) staining