



Rabbit Anti-MRPL10 antibody

SL17768R

Product Name:	MRPL10
Chinese Name:	Mitochondrion核糖体蛋白L10抗体
Alias:	39S ribosomal protein L10; 39S ribosomal protein L10 mitochondrial; 39S ribosomal protein L10 mitochondrial precursor; 39S ribosomal protein L8; L10mt; L8mt; MGC17973; mitochondrial; Mitochondrial ribosomal protein L10; MRP L10; MRP L8; MRP-L10; MRP-L8; MRPL 10; MRPL10; MRPL8; RM10 HUMAN; RPML8.
Organism Species:	Rabbit
Clonality:	Polyclonal
React Species:	Human,Mouse,Rat,Dog,Cow,Horse,
Applications:	WB=1:500-2000ELISA=1:500-1000IHC-P=1:400-800IHC-F=1:400-800ICC=1:100-500IF=1:100-500 (Paraffin sections need antigen repair) not yet tested in other applications. optimal dilutions/concentrations should be determined by the end user.
Molecular weight:	26kDa
Cellular localization:	cytoplasmic
Form:	Lyophilized or Liquid
Concentration:	1mg/ml
immunogen:	KLH conjugated synthetic peptide derived from human MRPL10:101-200/261
Lsotype:	IgG
Purification:	affinity purified by Protein A
Storage Buffer:	0.01M TBS(pH7.4) with 1% BSA, 0.03% Proclin300 and 50% Glycerol.
Storage:	Store at -20 °C for one year. Avoid repeated freeze/thaw cycles. The lyophilized antibody is stable at room temperature for at least one month and for greater than a year when kept at -20°C. When reconstituted in sterile pH 7.4 0.01M PBS or diluent of antibody the antibody is stable for at least two weeks at 2-4 °C.
PubMed:	PubMed
Product Detail:	Mammalian mitochondrial ribosomal proteins are encoded by nuclear genes and help in protein synthesis within the mitochondrion. Mitochondrial ribosomes (mitoribosomes) consist of a small 28S subunit and a large 39S subunit. They have an estimated 75% protein to rRNA composition compared to prokaryotic ribosomes, where this ratio is

reversed. Another difference between mammalian mitoribosomes and prokaryotic ribosomes is that the latter contain a 5S rRNA. Among different species, the proteins comprising the mitoribosome differ greatly in sequence, and sometimes in biochemical properties, which prevents easy recognition by sequence homology. This gene encodes a 39S subunit protein. Sequence analysis identified three transcript variants that encode two different isoforms. A pseudogene corresponding to this gene is found on chromosome 5q. [provided by RefSeq, Nov 2010]

Subcellular Location:

Mitochondrion.

Similarity:

Belongs to the ribosomal protein L10P family.

SWISS:

Q7Z7H8

Gene ID:

124995

Database links:

[Entrez Gene: 124995](#) Human

[Entrez Gene: 107732](#) Mouse

[Omim: 611825](#) Human

[SwissProt: Q7Z7H8](#) Human

[SwissProt: Q3TBW2](#) Mouse

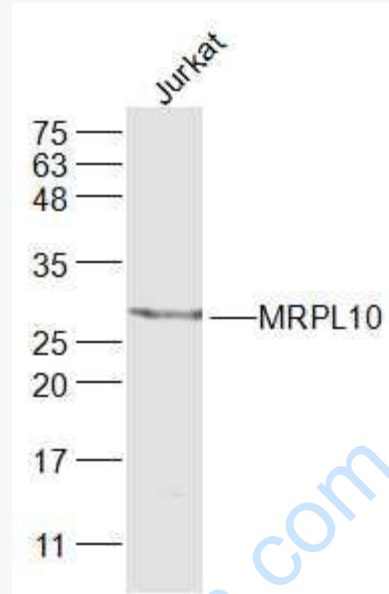
[Unigene: 347535](#) Human

[Unigene: 208946](#) Mouse

Important Note:

This product as supplied is intended for research use only, not for use in human, therapeutic or diagnostic applications.

Picture:



Sample:

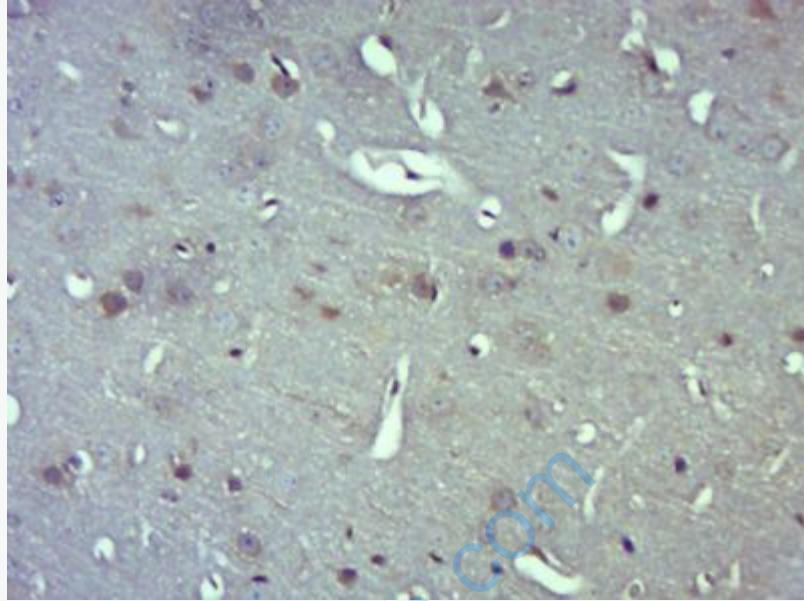
Jurkat(Human) Cell Lysate at 30 ug

Primary: Anti-MRPL10 (SL17768R) at 1/300 dilution

Secondary: IRDye800CW Goat Anti-Rabbit IgG at 1/20000 dilution

Predicted band size: 26 kD

Observed band size: 26 kD



Paraformaldehyde-fixed, paraffin embedded (Mouse brain); Antigen retrieval by boiling in sodium citrate buffer (pH6.0) for 15min; Block endogenous peroxidase by 3% hydrogen peroxide for 20 minutes; Blocking buffer (normal goat serum) at 37°C for 30min; Antibody incubation with (MRPL10) Polyclonal Antibody, Unconjugated (SL17768R) at 1:400 overnight at 4°C, followed by operating according to SP Kit(Rabbit) (sp-0023) instructions and DAB staining.