



## Rabbit Anti-MRPL14 antibody

SL17770R

<b>Product Name:</b>	MRPL14
<b>Chinese Name:</b>	Mitochondrion核糖体蛋白L14抗体
<b>Alias:</b>	1110006I11Rik; 39S ribosomal protein L14; 39S ribosomal protein L14 mitochondrial; 39S ribosomal protein L32; AI846816; L14mt; L32mt; mitochondrial; MRP L14; MRP L32; MRP-L14; MRP-L32; mrpl14; RM14 HUMAN.
<b>Organism Species:</b>	Rabbit
<b>Clonality:</b>	Polyclonal
<b>React Species:</b>	Human,Mouse,Rat,Cow,Horse,Rabbit,Sheep,
<b>Applications:</b>	ELISA=1:500-1000IHC-P=1:400-800IHC-F=1:400-800ICC=1:100-500IF=1:100-500 (Paraffin sections need antigen repair) not yet tested in other applications. optimal dilutions/concentrations should be determined by the end user.
<b>Molecular weight:</b>	13kDa
<b>Cellular localization:</b>	cytoplasmic
<b>Form:</b>	Lyophilized or Liquid
<b>Concentration:</b>	1mg/ml
<b>immunogen:</b>	KLH conjugated synthetic peptide derived from human MRPL14:61-145/145
<b>Lsotype:</b>	IgG
<b>Purification:</b>	affinity purified by Protein A
<b>Storage Buffer:</b>	0.01M TBS(pH7.4) with 1% BSA, 0.03% Proclin300 and 50% Glycerol.
<b>Storage:</b>	Store at -20 °C for one year. Avoid repeated freeze/thaw cycles. The lyophilized antibody is stable at room temperature for at least one month and for greater than a year when kept at -20°C. When reconstituted in sterile pH 7.4 0.01M PBS or diluent of antibody the antibody is stable for at least two weeks at 2-4 °C.
<b>PubMed:</b>	<a href="#">PubMed</a>
<b>Product Detail:</b>	Mammalian mitochondrial ribosomal proteins are encoded by nuclear genes and help in protein synthesis within the mitochondrion. Mitochondrial ribosomes (mitoribosomes) consist of a small 28S subunit and a large 39S subunit. They have an estimated 75% protein to rRNA composition compared to prokaryotic ribosomes, where this ratio is reversed. Another difference between mammalian mitoribosomes and prokaryotic

ribosomes is that the latter contain a 5S rRNA. Among different species, the proteins comprising the mitoribosome differ greatly in sequence, and sometimes in biochemical properties, which prevents easy recognition by sequence homology. This gene encodes a 39S subunit protein. A pseudogene corresponding to this gene is found at 17p13.3. [provided by RefSeq, Jul 2008]

**Function:**

Belongs to the ribosomal protein L14P family.

**Subunit:**

part of the mitochondrial ribosome large subunit (39S) (By similarity); associates with MALSU1.

**Subcellular Location:**

Mitochondrion.

**Similarity:**

Belongs to the ribosomal protein L14P family.

**SWISS:**

Q6P1L8

**Gene ID:**

64928

**Database links:**

[Entrez Gene: 614579](#) Cow

[Entrez Gene: 64928](#) Human

[Entrez Gene: 68463](#) Mouse

[Entrez Gene: 301250](#) Rat

[Omim: 611827](#) Human

[SwissProt: Q1JQ99](#) Cow

[SwissProt: Q6P1L8](#) Human

[SwissProt: Q9D1I6](#) Mouse

[SwissProt: Q7M0E7](#) Rat

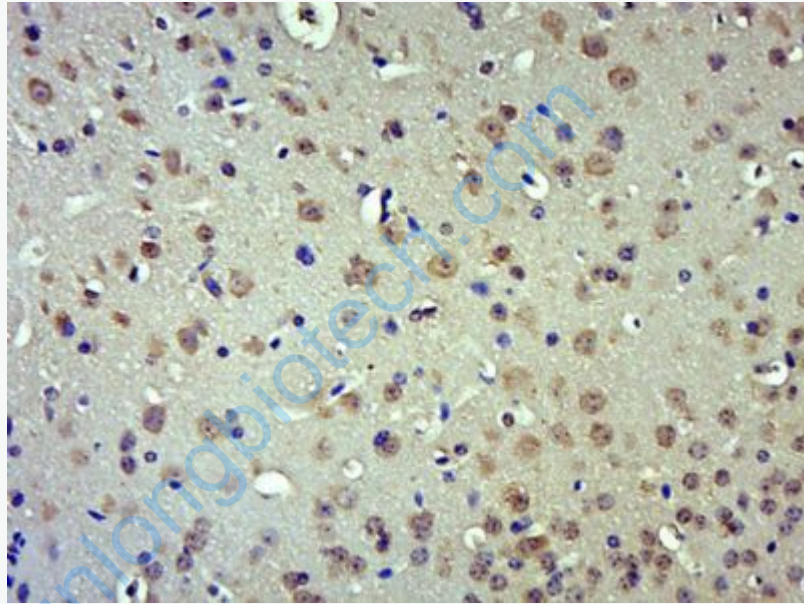
[Unigene: 311190](#) Human

[Unigene: 379158](#) Mouse

[Unigene: 35669](#) Rat

**Important Note:**

This product as supplied is intended for research use only, not for use in human, therapeutic or diagnostic applications.



**Picture:**

Paraformaldehyde-fixed, paraffin embedded (Mouse brain); Antigen retrieval by boiling in sodium citrate buffer (pH6.0) for 15min; Block endogenous peroxidase by 3% hydrogen peroxide for 20 minutes; Blocking buffer (normal goat serum) at 37°C for 30min; Antibody incubation with (MRPL14) Polyclonal Antibody, Unconjugated (SL17770R) at 1:400 overnight at 4°C, followed by operating according to SP Kit(Rabbit) (sp-0023) instructions and DAB staining.