



Rabbit Anti-MRPL21 antibody

SL17780R

Product Name:	MRPL21
Chinese Name:	Mitochondrion核糖体蛋白L21抗体
Alias:	39S ribosomal protein L21; 39S ribosomal protein L21, mitochondrial; 39S ribosomal protein L21, mitochondrial precursor; L21mt; MGC62013; mitochondrial; Mitochondrial ribosomal protein L21; MRP L21; MRP-L21; Mrpl21; RM21_HUMAN.
Organism Species:	Rabbit
Clonality:	Polyclonal
React Species:	Human,Mouse,Rat,Dog,Cow,Horse,Sheep,
Applications:	WB=1:500-2000ELISA=1:500-1000IHC-P=1:400-800IHC-F=1:400-800ICC=1:100-500IF=1:100-500 (Paraffin sections need antigen repair) not yet tested in other applications. optimal dilutions/concentrations should be determined by the end user.
Molecular weight:	19kDa
Cellular localization:	cytoplasmicMitochondrion
Form:	Lyophilized or Liquid
Concentration:	1mg/ml
immunogen:	KLH conjugated synthetic peptide derived from human MRPL21:40-120/205
Lsotype:	IgG
Purification:	affinity purified by Protein A
Storage Buffer:	0.01M TBS(pH7.4) with 1% BSA, 0.03% Proclin300 and 50% Glycerol.
Storage:	Store at -20 °C for one year. Avoid repeated freeze/thaw cycles. The lyophilized antibody is stable at room temperature for at least one month and for greater than a year when kept at -20°C. When reconstituted in sterile pH 7.4 0.01M PBS or diluent of antibody the antibody is stable for at least two weeks at 2-4 °C.
PubMed:	PubMed
Product Detail:	Mammalian mitochondrial ribosomal proteins are encoded by nuclear genes and help in protein synthesis within the mitochondrion. Mitochondrial ribosomes (mitoribosomes) consist of a small 28S subunit and a large 39S subunit. They have an estimated 75% protein to rRNA composition compared to prokaryotic ribosomes, where this ratio is reversed. Another difference between mammalian mitoribosomes and prokaryotic

ribosomes is that the latter contain a 5S rRNA. Among different species, the proteins comprising the mitoribosome differ greatly in sequence, and sometimes in biochemical properties, which prevents easy recognition by sequence homology. This gene encodes a 39S subunit protein. Multiple transcript variants encoding different isoforms were identified through sequence analysis although some may be subject to nonsense-mediated decay (NMD). [provided by RefSeq, Jul 2008]

Subcellular Location:

Mitochondrion.

Similarity:

Belongs to the ribosomal protein L21P family.

SWISS:

Q7Z2W9

Gene ID:

611834

Database links:

[Entrez Gene: 219927](#) Human

[Entrez Gene: 353242](#) Mouse

[Entrez Gene: 309140](#) Rat

[Omim: 611834](#) Human

[SwissProt: Q7Z2W9](#) Human

[SwissProt: Q9D1N9](#) Mouse

[Unigene: 503047](#) Human

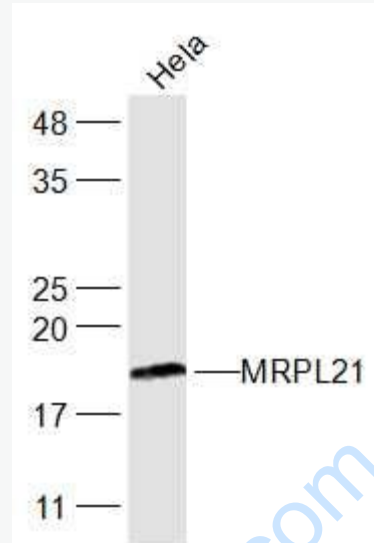
[Unigene: 74084](#) Mouse

[Unigene: 22778](#) Rat

Important Note:

This product as supplied is intended for research use only, not for use in human, therapeutic or diagnostic applications.

Picture:



Sample:

HeLa(Human) Cell Lysate at 30 ug

Primary: Anti-MRPL21 (SL17780R) at 1/300 dilution

Secondary: IRDye800CW Goat Anti-Rabbit IgG at 1/20000 dilution

Predicted band size: 19 kD

Observed band size: 19 kD