



## Rabbit Anti-MRPL22 antibody

SL17781R

<b>Product Name:</b>	MRPL22
<b>Chinese Name:</b>	Mitochondrion核糖体蛋白L22抗体
<b>Alias:</b>	39S ribosomal protein L21; 39S ribosomal protein L21, mitochondrial; 39S ribosomal protein L21, mitochondrial precursor; L21mt; MGC62013; mitochondrial; Mitochondrial ribosomal protein L21; MRP L21; MRP-L21; Mrpl21; RM21_HUMAN.
<b>Organism Species:</b>	Rabbit
<b>Clonality:</b>	Polyclonal
<b>React Species:</b>	Human,Mouse,Rat,Chicken,Zebrafish,
<b>Applications:</b>	WB=1:500-2000ELISA=1:500-1000IHC-P=1:400-800IHC-F=1:400-800ICC=1:100-500IF=1:100-500 (Paraffin sections need antigen repair) not yet tested in other applications. optimal dilutions/concentrations should be determined by the end user.
<b>Molecular weight:</b>	23kDa
<b>Cellular localization:</b>	cytoplasmic <a href="#">Mitochondrion</a>
<b>Form:</b>	Lyophilized or Liquid
<b>Concentration:</b>	1mg/ml
<b>immunogen:</b>	KLH conjugated synthetic peptide derived from human MRPL22:41-120/206
<b>Lsotype:</b>	IgG
<b>Purification:</b>	affinity purified by Protein A
<b>Storage Buffer:</b>	0.01M TBS(pH7.4) with 1% BSA, 0.03% Proclin300 and 50% Glycerol.
<b>Storage:</b>	Store at -20 °C for one year. Avoid repeated freeze/thaw cycles. The lyophilized antibody is stable at room temperature for at least one month and for greater than a year when kept at -20°C. When reconstituted in sterile pH 7.4 0.01M PBS or diluent of antibody the antibody is stable for at least two weeks at 2-4 °C.
<b>PubMed:</b>	<a href="#">PubMed</a>
<b>Product Detail:</b>	Mammalian mitochondrial ribosomal proteins are encoded by nuclear genes and help in protein synthesis within the mitochondrion. Mitochondrial ribosomes (mitoribosomes) consist of a small 28S subunit and a large 39S subunit. They have an estimated 75% protein to rRNA composition compared to prokaryotic ribosomes, where this ratio is reversed. Another difference between mammalian mitoribosomes and prokaryotic

ribosomes is that the latter contain a 5S rRNA. Among different species, the proteins comprising the mitoribosome differ greatly in sequence, and sometimes in biochemical properties, which prevents easy recognition by sequence homology. This gene encodes a 39S subunit protein that belongs to the L22 ribosomal protein family. A pseudogene corresponding to this gene is found on chromosome 4q. Two transcript variants encoding different isoforms have been found for this gene. [provided by RefSeq, Jul 2008]

**Subcellular Location:**

Mitochondrion.

**Similarity:**

Belongs to the ribosomal protein L22P family.

**SWISS:**

Q9NWU5

**Gene ID:**

29093

**Database links:**

[Entrez Gene: 29093](#) Human

[Entrez Gene: 216767](#) Mouse

[Entrez Gene: 287302](#) Rat

[Omim: 611835](#) Human

[SwissProt: Q9NWU5](#) Human

[SwissProt: Q8BU88](#) Mouse

[SwissProt: P0C2C0](#) Rat

[Unigene: 483924](#) Human

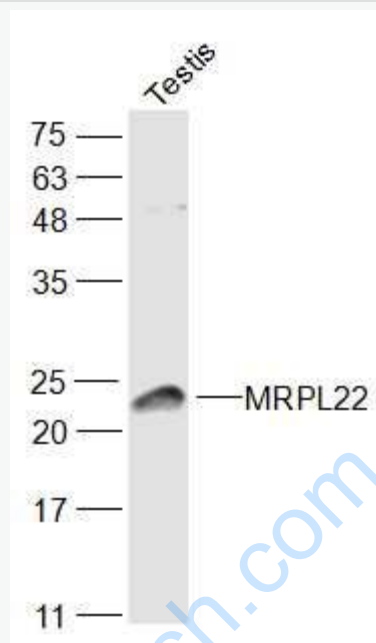
[Unigene: 259907](#) Mouse

[Unigene: 13421](#) Rat

**Important Note:**

This product as supplied is intended for research use only, not for use in human, therapeutic or diagnostic applications.

Picture:



Sample:

Testis (Mouse) Lysate at 40 ug

Primary: Anti-MRPL22 (SL17781R) at 1/300 dilution

Secondary: IRDye800CW Goat Anti-Rabbit IgG at 1/20000 dilution

Predicted band size: 23 kD

Observed band size: 23 kD