



Rabbit Anti-MSL1v1/CENP36 antibody

SL17857R

Product Name:	MSL1v1/CENP36
Chinese Name:	着丝粒蛋白36抗体
Alias:	CENP-36; centromere protein 36; DKFZp686P06109; DKFZp727C091; hypothetical protein LOC284058; K1267_HUMAN; KIAA1267; male-specific lethal 1 homolog; MGC102843; MLL1/MLL complex subunit KIAA1267; MSL1v1; NSL1.
Organism Species:	Rabbit
Clonality:	Polyclonal
React Species:	Human,Mouse,Rat,Dog,Pig,Cow,Horse,Rabbit,
Applications:	ELISA=1:500-1000IHC-P=1:400-800IHC-F=1:400-800ICC=1:100-500IF=1:100-500 (Paraffin sections need antigen repair) not yet tested in other applications. optimal dilutions/concentrations should be determined by the end user.
Molecular weight:	121kDa
Cellular localization:	The nucleus
Form:	Lyophilized or Liquid
Concentration:	1mg/ml
immunogen:	KLH conjugated synthetic peptide derived from human MSL1v1/CENP36:501-600/1105
Lsotype:	IgG
Purification:	affinity purified by Protein A
Storage Buffer:	0.01M TBS(pH7.4) with 1% BSA, 0.03% Proclin300 and 50% Glycerol.
Storage:	Store at -20 °C for one year. Avoid repeated freeze/thaw cycles. The lyophilized antibody is stable at room temperature for at least one month and for greater than a year when kept at -20°C. When reconstituted in sterile pH 7.4 0.01M PBS or diluent of antibody the antibody is stable for at least two weeks at 2-4 °C.
PubMed:	PubMed
Product Detail:	This gene encodes a nuclear protein that is a subunit of two protein complexes involved with histone acetylation, the MLL1 complex and the NSL1 complex. The corresponding protein in Drosophila interacts with K(lysine) acetyltransferase 8, which is also a subunit of both the MLL1 and NSL1 complexes. [provided by RefSeq, Jun 2012]

Function:

As part of the NSL complex it is involved in acetylation of nucleosomal histone H4 on several lysine residues and therefore may be involved in the regulation of transcription.

Subcellular Location:

Expressed in the brain.

Tissue Specificity:

Expressed in the brain.

SWISS:

Q7Z3B3

Gene ID:

284058

Database links:

[Entrez Gene: 284058](#) Human

[Entrez Gene: 76719](#) Mouse

[SwissProt: Q7Z3B3](#) Human

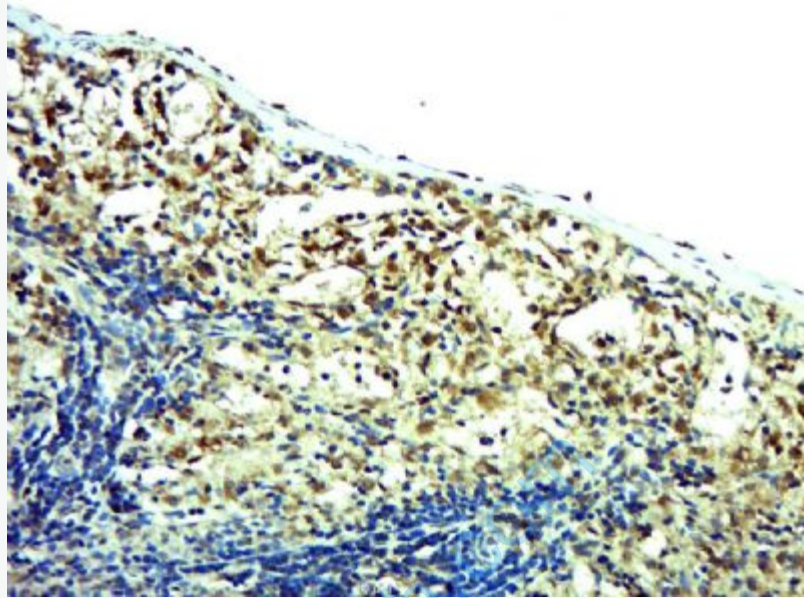
[SwissProt: Q80TG1](#) Mouse

[Unigene: 648744](#) Human

[Unigene: 136418](#) Mouse

Important Note:

This product as supplied is intended for research use only, not for use in human, therapeutic or diagnostic applications.



Picture:

Paraformaldehyde-fixed, paraffin embedded (Rat spleen); Antigen retrieval by boiling in sodium citrate buffer (pH6.0) for 15min; Block endogenous peroxidase by 3% hydrogen peroxide for 20 minutes; Blocking buffer (normal goat serum) at 37°C for 30min; Antibody incubation with (MSL1v1) Polyclonal Antibody, Unconjugated (SL17857R) at 1:500 overnight at 4°C, followed by a conjugated secondary (sp-0023) for 20 minutes and DAB staining.