



## Rabbit Anti-GPR14 antibody

SL1806R

<b>Product Name:</b>	GPR14
<b>Chinese Name:</b>	G protein-coupled receptor14抗体
<b>Alias:</b>	G protein coupled receptor 14; Urotensin II receptor (UR II R); UTR; UTR2; UTS2R; G Protein Coupled Receptor 14; GPCR GPR14; Urotensin II receptor; UR-II-R; UR-2-R; G-protein coupled receptor 14; G-protein coupled sensory epithelial neuro peptide-like receptor; SENR; GPR14; UR2R HUMAN; GPCR GPR14.
<b>Organism Species:</b>	Rabbit
<b>Clonality:</b>	Polyclonal
<b>React Species:</b>	Human,Mouse,Rat,
<b>Applications:</b>	WB=1:500-2000ELISA=1:500-1000IHC-F=1:400-800IF=1:100-500 (Paraffin sections need antigen repair) not yet tested in other applications. optimal dilutions/concentrations should be determined by the end user.
<b>Molecular weight:</b>	42kDa
<b>Cellular localization:</b>	The cell membrane
<b>Form:</b>	Lyophilized or Liquid
<b>Concentration:</b>	1mg/ml
<b>immunogen:</b>	KLH conjugated synthetic peptide derived from human UTS2R:101-200/389<Cytoplasmic>
<b>Lsotype:</b>	IgG
<b>Purification:</b>	affinity purified by Protein A
<b>Storage Buffer:</b>	0.01M TBS(pH7.4) with 1% BSA, 0.03% Proclin300 and 50% Glycerol.
<b>Storage:</b>	Store at -20 °C for one year. Avoid repeated freeze/thaw cycles. The lyophilized antibody is stable at room temperature for at least one month and for greater than a year when kept at -20°C. When reconstituted in sterile pH 7.4 0.01M PBS or diluent of antibody the antibody is stable for at least two weeks at 2-4 °C.
<b>PubMed:</b>	<a href="#">PubMed</a>
<b>Product Detail:</b>	GPCR GPR14 has been reported to be expressed at high levels in the heart and pancreas and also in artery and smooth muscle. Low transcript levels have been identified in brain, particularly in thalamus, superior occipital gyrus, and substantia nigra.

GPR14 is a high affinity receptor for urotensin-2 and urotensin-2B. The activity of this receptor is mediated by a G-protein that activates a phosphatidylinositol-calcium second messenger system. Referenced from Swiss-Prot Q9UKP6.

**Function:**

High affinity receptor for urotensin-2 and urotensin-2B. The activity of this receptor is mediated by a G-protein that activate a phosphatidylinositol-calcium second messenger system.

**Subcellular Location:**

Cell membrane; Multi-pass membrane protein.

**Tissue Specificity:**

Most abundant expression in the heart and pancreas.

**Similarity:**

Belongs to the G-protein coupled receptor 1 family.

**SWISS:**

Q9UKP6

**Gene ID:**

2837

**Database links:**

[Entrez Gene: 2837](#)Human

[Entrez Gene: 217369](#)Mouse

[Entrez Gene: 57305](#)Rat

[Omim: 600896](#)Human

[SwissProt: Q9UKP6](#)Human

[SwissProt: Q8VIH9](#)Mouse

[SwissProt: P49684](#)Rat

[Unigene: 192720](#)Human

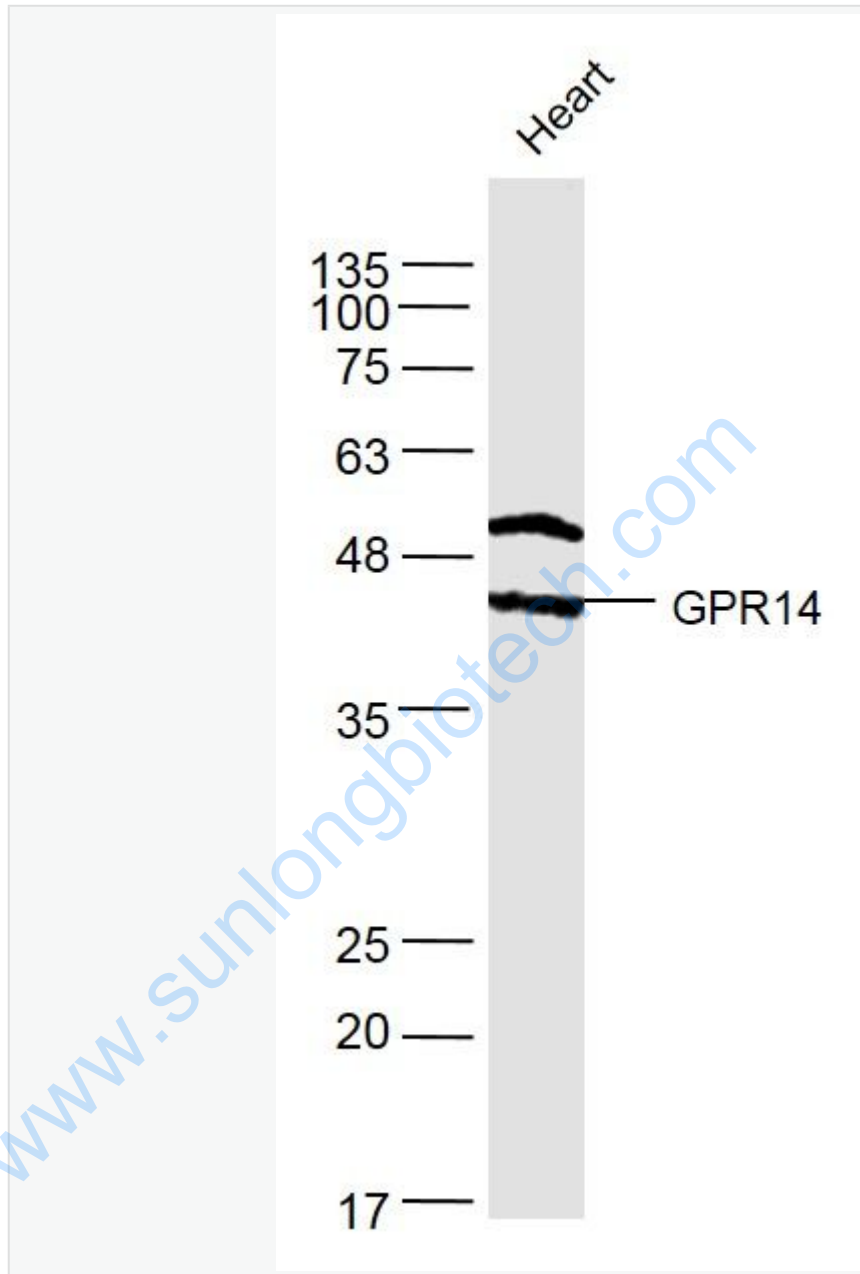
[Unigene: 20122](#)Mouse

[Unigene: 44230](#)Rat

**Important Note:**

This product as supplied is intended for research use only, not for use in human, therapeutic or diagnostic applications.

Picture:



Sample:

Heart (Mouse) Lysate at 40 ug

Primary: Anti-GPR14 (SL1806R) at 1/300 dilution

Secondary: IRDye800CW Goat Anti-Rabbit IgG at 1/20000 dilution

Predicted band size: 42 kD

	Observed band size: 42 kD
--	---------------------------

[www.sunlongbiotech.com](http://www.sunlongbiotech.com)