



Rabbit Anti-MHC class I antibody

SL18070R

Product Name:	MHC class I
Chinese Name:	组织相容性复合物A2抗体
Alias:	Antigen presenting molecule; HLA A; HLA A2; HLA A histocompatibility type; HLA; HLA class I; HLA class I histocompatibility antigen A 2 alpha chain; HLA class I histocompatibility antigen A2 alpha chain; HLA-A; HLAA; Human leukocyte antigen; Leucocyte antigen class I; Leukocyte antigen class I A; Major histocompatibility complex class I A; Major histocompatibility complex class I; MHC class I antigen [precursor]; MHC class I antigen A; MHC class I antigen A*2; MHC class I antigen A2; MHC class I antigen HLA A; MHC class I antigen HLA A heavy chain; MHC leukocyte antigen; 1A02_HUMAN.
Organism Species:	Rabbit
Clonality:	Polyclonal
React Species:	Human,
Applications:	WB=1:500-2000ELISA=1:500-1000IHC-P=1:400-800IHC-F=1:400-800ICC=1:100-500IF=1:100-500 (Paraffin sections need antigen repair) not yet tested in other applications. optimal dilutions/concentrations should be determined by the end user.
Molecular weight:	38kDa
Cellular localization:	The cell membrane
Form:	Lyophilized or Liquid
Concentration:	1mg/ml
immunogen:	KLH conjugated synthetic peptide derived from human HLA A2:101-200/365<Extracellular>
Lsotype:	IgG
Purification:	affinity purified by Protein A
Storage Buffer:	0.01M TBS(pH7.4) with 1% BSA, 0.03% Proclin300 and 50% Glycerol.
Storage:	Store at -20 °C for one year. Avoid repeated freeze/thaw cycles. The lyophilized antibody is stable at room temperature for at least one month and for greater than a year when kept at -20°C. When reconstituted in sterile pH 7.4 0.01M PBS or diluent of antibody the antibody is stable for at least two weeks at 2-4 °C.

PubMed:[PubMed](#)

HLA-A belongs to the HLA class I heavy chain paralogues. This class I molecule is a heterodimer consisting of a heavy chain and a light chain (beta-2 microglobulin). The heavy chain is anchored in the membrane. Class I molecules play a central role in the immune system by presenting peptides derived from the endoplasmic reticulum lumen. They are expressed in nearly all cells. The heavy chain is approximately 45 kDa and its gene contains 8 exons. Exon 1 encodes the leader peptide, exons 2 and 3 encode the alpha1 and alpha2 domains, which both bind the peptide, exon 4 encodes the alpha3 domain, exon 5 encodes the transmembrane region, and exons 6 and 7 encode the cytoplasmic tail. Polymorphisms within exon 2 and exon 3 are responsible for the peptide binding specificity of each class one molecule. Typing for these polymorphisms is routinely done for bone marrow and kidney transplantation. Hundreds of HLA-A alleles have been described. [provided by RefSeq, Jul 2008]

Function:

Involved in the presentation of foreign antigens to the immune system. Dimer of alpha chain and a beta chain (beta-2-microglobulin). Interacts with human herpesvirus 8 MIR1 protein.

Subcellular Location:

Membrane; Single-pass type I membrane protein.

Similarity:

Belongs to the MHC class I family.
Contains 1 Ig-like C1-type (immunoglobulin-like) domain.

SWISS:

P01892

Gene ID:

3105

Database links:

[Entrez Gene: 3105](#) Human

[Omim: 142800](#) Human

[SwissProt: P30443](#) Human

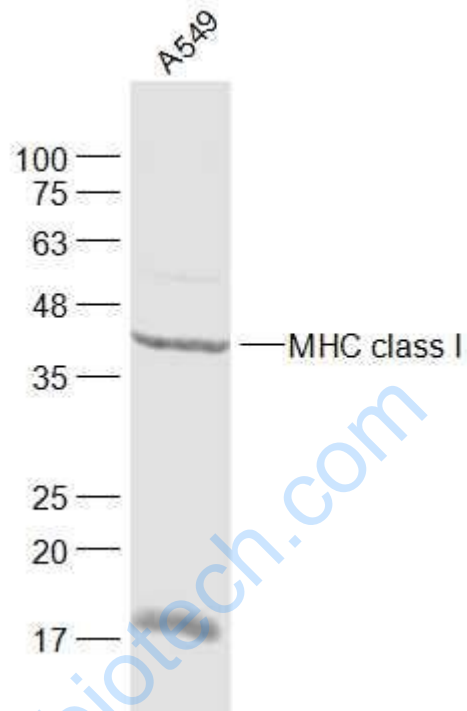
[Unigene: 181244](#) Human HumanP01892

Important Note:

This product as supplied is intended for research use only, not for use in human, therapeutic or diagnostic applications.

Product Detail:

Picture:



Sample:

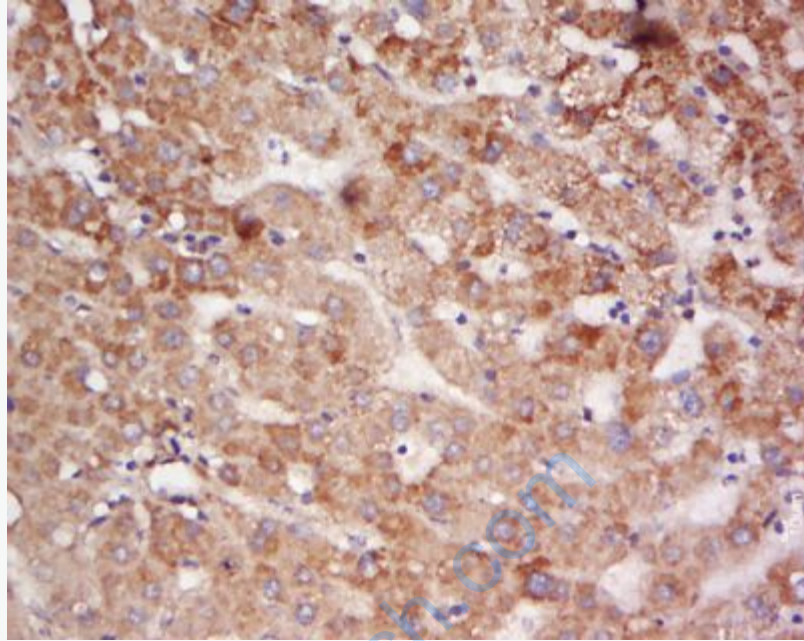
A549(Human) Cell Lysate at 30 ug

Primary: Anti-MHC class I (SL18070R) at 1/300 dilution

Secondary: IRDye800CW Goat Anti-Rabbit IgG at 1/20000 dilution

Predicted band size: 38 kD

Observed band size: 38 kD



Tissue/cell: human liver cancer; 4% Paraformaldehyde-fixed and paraffin-embedded;

Antigen retrieval: citrate buffer (0.01M, pH 6.0), Boiling bathing for 15min; Block endogenous peroxidase by 3% Hydrogen peroxide for 30min; Blocking buffer (normal goat serum,C-0005) at 37°C for 20 min;

Incubation: Anti-HLA A2 Polyclonal Antibody, Unconjugated(SL18070R) 1:500, overnight at 4°C, followed by conjugation to the secondary antibody(SP-0023) and DAB(C-0010) staining