



## Rabbit Anti-GPR78 antibody

SL1807R

<b>Product Name:</b>	GPR78
<b>Chinese Name:</b>	G protein-coupled receptor78抗体
<b>Alias:</b>	GPCR GPR78; G protein-coupled receptor 78; G protein coupled receptor GPR78; G-protein coupled receptor 78; GPR78; GPR78 HUMAN; PRO19818; UNQ5925.
<b>Organism Species:</b>	Rabbit
<b>Clonality:</b>	Polyclonal
<b>React Species:</b>	Human,
<b>Applications:</b>	WB=1:500-2000ELISA=1:500-1000IHC-P=1:400-800IHC-F=1:400-800Flow-Cyt=1 $\mu$ g/testIF=1:100-500 (Paraffin sections need antigen repair) not yet tested in other applications. optimal dilutions/concentrations should be determined by the end user.
<b>Molecular weight:</b>	39kDa
<b>Cellular localization:</b>	The cell membrane
<b>Form:</b>	Lyophilized or Liquid
<b>Concentration:</b>	1mg/ml
<b>immunogen:</b>	KLH conjugated synthetic peptide derived from human GPR78:201-300/363<Extracellular>
<b>Lsotype:</b>	IgG
<b>Purification:</b>	affinity purified by Protein A
<b>Storage Buffer:</b>	0.01M TBS(pH7.4) with 1% BSA, 0.03% Proclin300 and 50% Glycerol.
<b>Storage:</b>	Store at -20 °C for one year. Avoid repeated freeze/thaw cycles. The lyophilized antibody is stable at room temperature for at least one month and for greater than a year when kept at -20°C. When reconstituted in sterile pH 7.4 0.01M PBS or diluent of antibody the antibody is stable for at least two weeks at 2-4 °C.
<b>PubMed:</b>	<a href="#">PubMed</a>
<b>Product Detail:</b>	G protein-coupled receptors (GPCRs, or GPRs) contain 7 transmembrane domains and transduce extracellular signals through heterotrimeric G proteins. <b>Function:</b> Orphan receptor. Displays a significant level of constitutive activity. Its effect is

mediated by G(s)-alpha protein that stimulate adenylate cyclase, resulting in an elevation of intracellular cAMP.

**Subcellular Location:**

Cell membrane; Multi-pass membrane protein.

**Tissue Specificity:**

High level of expression in placenta. Expressed throughout the brain at low level. No expression detected in skeletal muscle, lung, heart, liver, pancreas, or kidney.

**Similarity:**

Belongs to the G-protein coupled receptor 1 family.

**SWISS:**

Q96P69

**Gene ID:**

27201

**Database links:**

[Entrez Gene: 27201](#)Human

[Oimim: 606921](#)Human

[SwissProt: Q96P69](#)Human

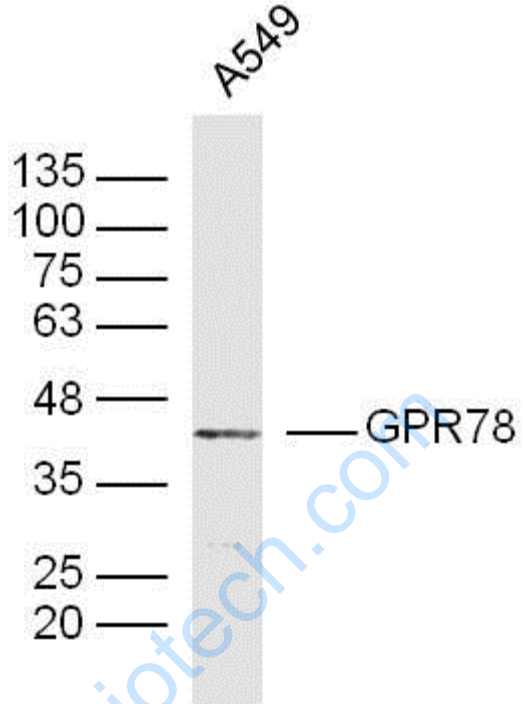
[Unigene: 350588](#)Human

[Unigene: 740355](#)Human

**Important Note:**

This product as supplied is intended for research use only, not for use in human, therapeutic or diagnostic applications.

Picture:



Sample:

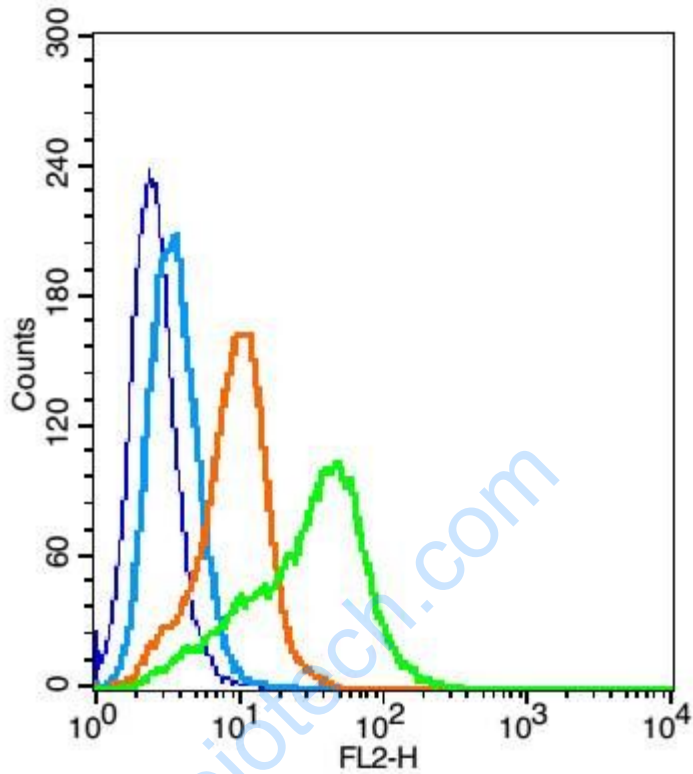
A549 Cell (Human) Lysate at 30 ug

Primary: Anti-GPR78(SL1807R) at 1/300 dilution

Secondary: IRDye800CW Goat Anti-Rabbit IgG at 1/20000 dilution

Predicted band size: 39 kD

Observed band size: 39 kD



Blank control (blue line): U937 (blue).

Primary Antibody (green line): Rabbit Anti-GPR7 antibody (SL1807R)

Dilution:  $1\mu\text{g} / 10^6$  cells;

Isotype Control Antibody (orange line): Rabbit IgG .

Secondary Antibody (white blue line): Goat anti-rabbit IgG-PE

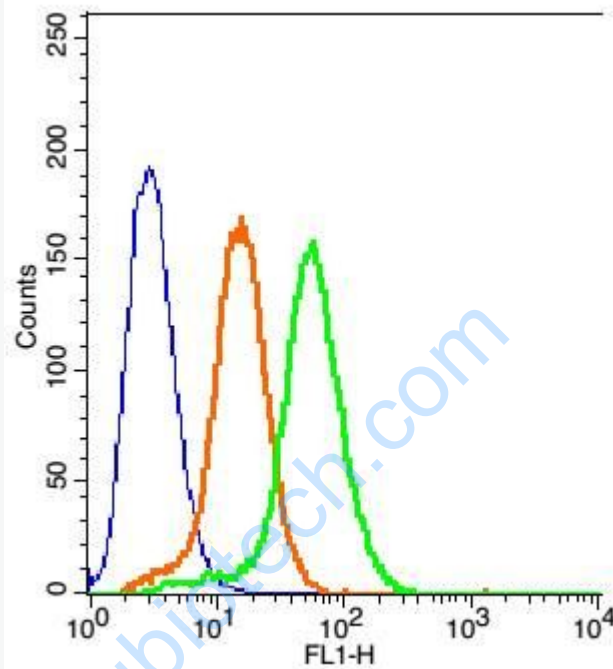
Dilution:  $1\mu\text{g} / \text{test}$ .

#### Protocol

The cells were fixed with 2% paraformaldehyde for 10 min at room temperature.

The cells were then incubated in 1 X PBS/2%BSA/10% goat serum to block non-specific protein-protein interactions followed by the antibody for 15 min at room temperature. The secondary antibody used for 40 min at room temperature.

Acquisition of 20,000 events was performed.



Blank control: 293T Cells(blue).

Primary Antibody: Rabbit Anti-GPR78/AF488 Conjugated antibody (SL1807R),

Dilution: 1 $\mu$ g in 100  $\mu$ L 1X PBS containing 0.5% BSA;

Isotype Control Antibody: Rabbit IgG/AF488(orange) ,used under the same conditions.

#### Protocol

The cells were fixed with 2% paraformaldehyde (10 min) . The cells were washed twice with 1 X PBS. The cells were incubated in 1 X PBS containing 0.5% BSA + 1 0% goat serum (15 min) to block non-specific protein-protein interactions followed by the incubated with antibody (SL1807R) for 30 min on ice. Acquisition of 20,000

	events was performed.
--	-----------------------

[www.sunlongbiotech.com](http://www.sunlongbiotech.com)