



Rabbit Anti-Camk1g antibody

SL1809R

Product Name:	Camk1g
Chinese Name:	钙/钙调蛋白依赖蛋白激酶IG抗体
Alias:	Calcium/calmodulin dependent protein kinase 1 G; Calcium/calmodulin-dependent protein kinase type 1G; CaM kinase I gamma; CaM kinase IG; CaM-KI gamma; CaMKI gamma; CAMK1G; VWS1; CaMKI-gamma; CaMKIG; CaMK-like CREB kinase III; CLICK III; KCC1G_HUMAN.
Organism Species:	Rabbit
Clonality:	Polyclonal
React Species:	Human,Mouse,Rat,
Applications:	ELISA=1:500-1000IHC-P=1:400-800IHC-F=1:400-800IF=1:100-500 (Paraffin sections need antigen repair) not yet tested in other applications. optimal dilutions/concentrations should be determined by the end user.
Molecular weight:	53kDa
Cellular localization:	cytoplasmicThe cell membrane
Form:	Lyophilized or Liquid
Concentration:	1mg/ml
immunogen:	KLH conjugated synthetic peptide derived from human Camk1g:381-476/476
Lsotype:	IgG
Purification:	affinity purified by Protein A
Storage Buffer:	0.01M TBS(pH7.4) with 1% BSA, 0.03% Proclin300 and 50% Glycerol.
Storage:	Store at -20 °C for one year. Avoid repeated freeze/thaw cycles. The lyophilized antibody is stable at room temperature for at least one month and for greater than a year when kept at -20°C. When reconstituted in sterile pH 7.4 0.01M PBS or diluent of antibody the antibody is stable for at least two weeks at 2-4 °C.
PubMed:	PubMed
Product Detail:	CaMKI gamma is a Calcium/calmodulin-dependent protein kinase which belongs to a proposed calcium-triggered signaling cascade. In vitro it phosphorylates transcription factor CREB1. It has been proposed that CaMKI gamma is involved in dendritic outgrowth mediated by CaM-dependant protein kinase kinase.

Function:

Calcium/calmodulin-dependent protein kinase belonging to a proposed calcium-triggered signaling cascade. In vitro phosphorylates transcription factor CREB1 (By similarity).

Subcellular Location:

Cytoplasm. Golgi apparatus membrane; Peripheral membrane protein. Cell membrane; Peripheral membrane protein.

Tissue Specificity:

Mainly expressed in brain with small amounts in skeletal muscles, kidney, spleen and liver. Strongly expressed in forebrain neocortex, striatum and limbic system.

Post-translational modifications:

May be prenylated on Cys-473.

Similarity:

Belongs to the protein kinase superfamily. CAMK Ser/Thr protein kinase family. CaMK subfamily. Contains 1 protein kinase domain.

SWISS:

Q96NX5

Gene ID:

57172

Database links:

[Entrez Gene: 57172](#)Human

[Entrez Gene: 215303](#)Mouse

[Entrez Gene: 448849](#)Pig

[Entrez Gene: 171358](#)Rat

[SwissProt: Q96NX5](#)Human

[SwissProt: Q91VB2](#)Mouse

[SwissProt: Q7TNJ7](#)Rat

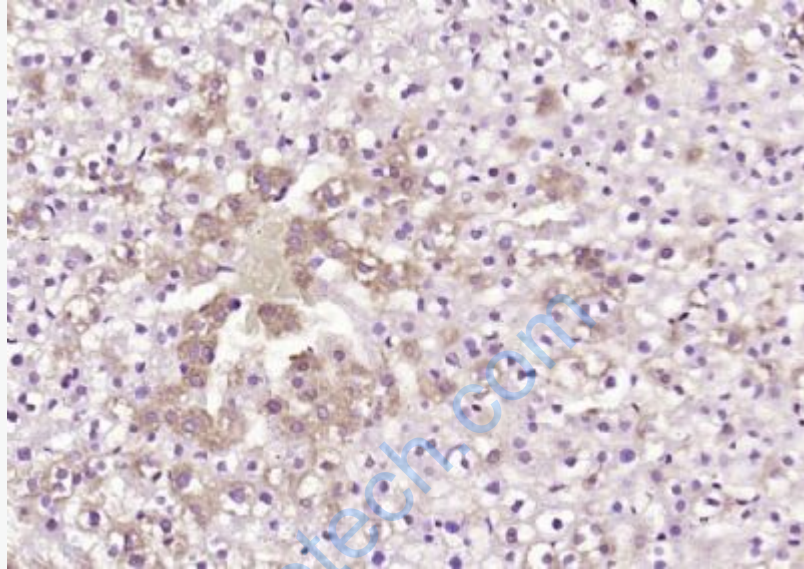
[Unigene: 199068](#)Human

[Unigene: 40329](#)Mouse

[Unigene: 91453](#)Rat

Important Note:

This product as supplied is intended for research use only, not for use in human, therapeutic or diagnostic applications.



Picture:

Paraformaldehyde-fixed, paraffin embedded (rat liver); Antigen retrieval by boiling in sodium citrate buffer (pH6.0) for 15min; Block endogenous peroxidase by 3% hydrogen peroxide for 20 minutes; Blocking buffer (normal goat serum) at 37°C for 30min; Antibody incubation with (Camk1g) Polyclonal Antibody, Unconjugated (SL1809R) at 1:200 overnight at 4°C, followed by operating according to SP Kit(Rabbit) (sp-0023) instructions and DAB staining.