



## Rabbit Anti-IP6K1 antibody

SL18184R

<b>Product Name:</b>	IP6K1
<b>Chinese Name:</b>	肌醇六磷酸激酶1抗体
<b>Alias:</b>	ATP:1D myo inositol hexakisphosphate phosphotransferase; IHPK1; Inositol hexakisphosphate kinase 1; Inositol hexaphosphate kinase 1; InsP6; InsP6 kinase 1; Ip6k1; IP6K1_HUMAN; Itpk6; Pi uptake stimulator; PiUS.
<b>Organism Species:</b>	Rabbit
<b>Clonality:</b>	Polyclonal
<b>React Species:</b>	Human,Mouse,Rat,Dog,Pig,Cow,Horse,Rabbit,Sheep,
<b>Applications:</b>	WB=1:500-2000ELISA=1:500-1000IHC-P=1:400-800IHC-F=1:400-800ICC=1:100-500IF=1:100-500 (Paraffin sections need antigen repair) not yet tested in other applications. optimal dilutions/concentrations should be determined by the end user.
<b>Molecular weight:</b>	50kDa
<b>Cellular localization:</b>	The nucleuscytoplasmic
<b>Form:</b>	Lyophilized or Liquid
<b>Concentration:</b>	1mg/ml
<b>immunogen:</b>	KLH conjugated synthetic peptide derived from human IP6K1:1-100/441
<b>Lsotype:</b>	IgG
<b>Purification:</b>	affinity purified by Protein A
<b>Storage Buffer:</b>	0.01M TBS(pH7.4) with 1% BSA, 0.03% Proclin300 and 50% Glycerol.
<b>Storage:</b>	Store at -20 °C for one year. Avoid repeated freeze/thaw cycles. The lyophilized antibody is stable at room temperature for at least one month and for greater than a year when kept at -20°C. When reconstituted in sterile pH 7.4 0.01M PBS or diluent of antibody the antibody is stable for at least two weeks at 2-4 °C.
<b>PubMed:</b>	<a href="#">PubMed</a>
<b>Product Detail:</b>	This gene encodes a member of the inositol phosphokinase family. The encoded protein may be responsible for the conversion of inositol hexakisphosphate (InsP6) to diphosphoinositol pentakisphosphate (InsP7/PP-InsP5). It may also convert 1,3,4,5,6-pentakisphosphate (InsP5) to PP-InsP4. Alternatively spliced transcript variants have been described. [provided by RefSeq, Jun 2011]

**Function:**

Converts inositol hexakisphosphate (InsP6) to diphosphoinositol pentakisphosphate (InsP7/PP-InsP5). Converts 1,3,4,5,6-pentakisphosphate (InsP5) to PP-InsP4.

**Subcellular Location:**

Cytoplasm. Nucleus.

**Similarity:**

Belongs to the inositol phosphokinase (IPK) family.

**SWISS:**

Q92551

**Gene ID:**

9807

**Database links:**

[Entrez Gene: 9807](#) Human

[Entrez Gene: 27399](#) Mouse

[Entrez Gene: 50560](#) Rat

[Omim: 606991](#) Human

[SwissProt: Q92551](#) Human

[SwissProt: Q6PD10](#) Mouse

[SwissProt: Q9ESM0](#) Rat

[Unigene: 386168](#) Human

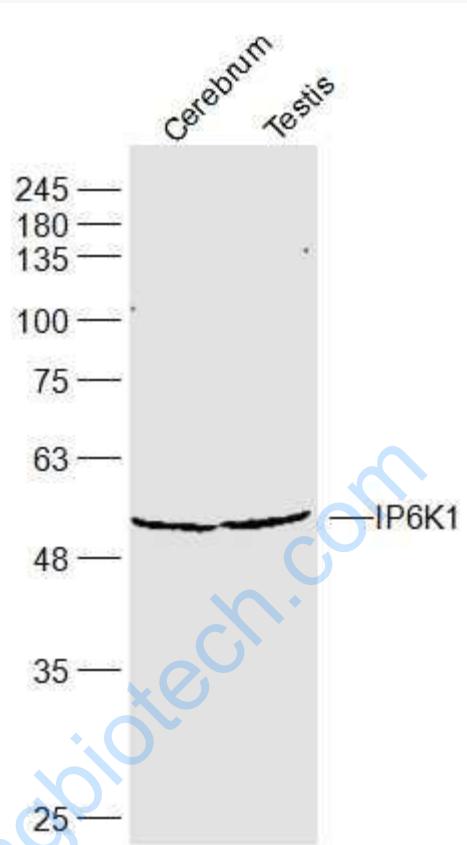
[Unigene: 276155](#) Mouse

[Unigene: 16751](#) Rat

**Important Note:**

This product as supplied is intended for research use only, not for use in human, therapeutic or diagnostic applications.

Picture:



Sample:

Cerebrum (Mouse) Lysate at 40 ug

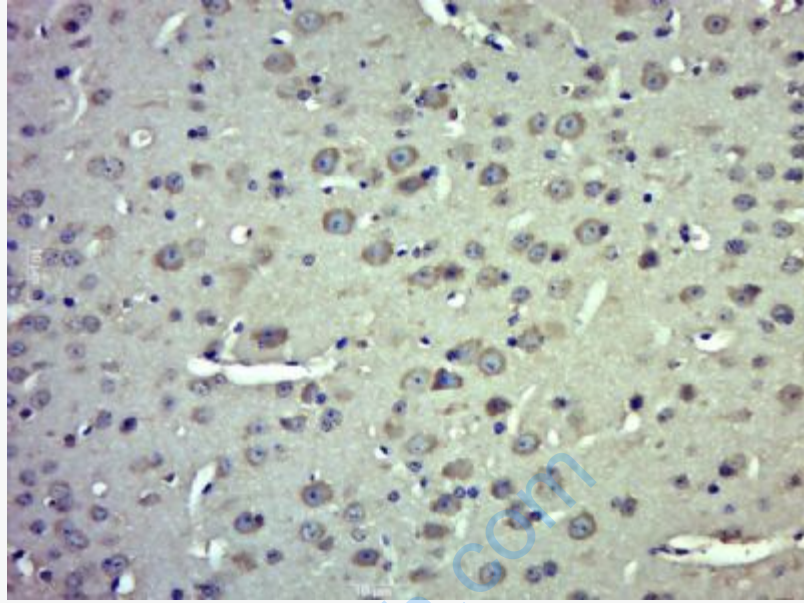
Testis (Mouse) Lysate at 40 ug

Primary: Anti-IP6K1 (SL18184R) at 1/300 dilution

Secondary: IRDye800CW Goat Anti-Rabbit IgG at 1/20000 dilution

Predicted band size: 50 kD

Observed band size: 50 kD



Paraformaldehyde-fixed, paraffin embedded (Mouse brain); Antigen retrieval by boiling in sodium citrate buffer (pH6.0) for 15min; Block endogenous peroxidase by 3% hydrogen peroxide for 20 minutes; Blocking buffer (normal goat serum) at 37°C for 30min; Antibody incubation with (IP6K1) Polyclonal Antibody, Unconjugated (SL18184R) at 1:500 overnight at 4°C, followed by a conjugated secondary (sp-0023) for 20 minutes and DAB staining.