



## Rabbit Anti-LCLAT1 antibody

SL18190R

<b>Product Name:</b>	LCLAT1
<b>Chinese Name:</b>	心磷脂酰基转移酶1抗体
<b>Alias:</b>	1-acylglycerol-3-phosphate O-acyltransferase 8; 1-AGP acyltransferase 8; 1-AGPAT 8; 1AGPAT8; Acyl-CoA:lysocardiolipin acyltransferase 1; AGPAT8; ALCAT1; HSRG1849; lclat1; LCLT1_HUMAN; LYCAT; Lysocardiolipin acyltransferase 1; UNQ1849; UNQ1849/PRO3579.
<b>Organism Species:</b>	Rabbit
<b>Clonality:</b>	Polyclonal
<b>React Species:</b>	Human,Mouse,Rat,Dog,Cow,Horse,Rabbit,Sheep,
<b>Applications:</b>	WB=1:500-2000ELISA=1:500-1000IHC-P=1:400-800IHC-F=1:400-800ICC=1:100-500IF=1:100-500 (Paraffin sections need antigen repair) not yet tested in other applications. optimal dilutions/concentrations should be determined by the end user.
<b>Molecular weight:</b>	49kDa
<b>Cellular localization:</b>	cytoplasmic
<b>Form:</b>	Lyophilized or Liquid
<b>Concentration:</b>	1mg/ml
<b>immunogen:</b>	KLH conjugated synthetic peptide derived from human LCLAT1:261-360/414
<b>Lsotype:</b>	IgG
<b>Purification:</b>	affinity purified by Protein A
<b>Storage Buffer:</b>	0.01M TBS(pH7.4) with 1% BSA, 0.03% Proclin300 and 50% Glycerol.
<b>Storage:</b>	Store at -20 °C for one year. Avoid repeated freeze/thaw cycles. The lyophilized antibody is stable at room temperature for at least one month and for greater than a year when kept at -20°C. When reconstituted in sterile pH 7.4 0.01M PBS or diluent of antibody the antibody is stable for at least two weeks at 2-4 °C.
<b>PubMed:</b>	<a href="#">PubMed</a>
<b>Product Detail:</b>	Acyl-CoA:lysocardiolipin acyltransferase. Possesses both lysophosphatidylinositol acyltransferase (LPIAT) and lysophosphatidylglycerol acyltransferase (LPGAT) activities. Recognizes both monolysocardiolipin and dilysocardiolipin as substrates with a preference for linoleoyl-CoA and oleoyl-CoA as acyl donors. Acts as a remodeling

enzyme for cardiolipin, a major membrane polyglycerophospholipid. Converts lysophosphatidic acid (LPA) into phosphatidic acid (PA) with a relatively low activity. Required for establishment of the hematopoietic and endothelial lineages.

**Subcellular Location:**

Endoplasmic reticulum membrane.

**Tissue Specificity:**

Expressed at higher level in heart, kidney and pancreas than in brain, spleen, liver, lung, small intestine and placenta.

**Similarity:**

Belongs to the 1-acyl-sn-glycerol-3-phosphate acyltransferase family.

**SWISS:**

Q6UWP7

**Gene ID:**

253558

**Database links:**

[Entrez Gene: 253558](#) Human

[Entrez Gene: 225010](#) Mouse

[Entrez Gene: 100217396](#) Pig

[Omim: 614241](#) Human

[SwissProt: Q6UWP7](#) Human

[SwissProt: Q3UN02](#) Mouse

[Unigene: 468048](#) Human

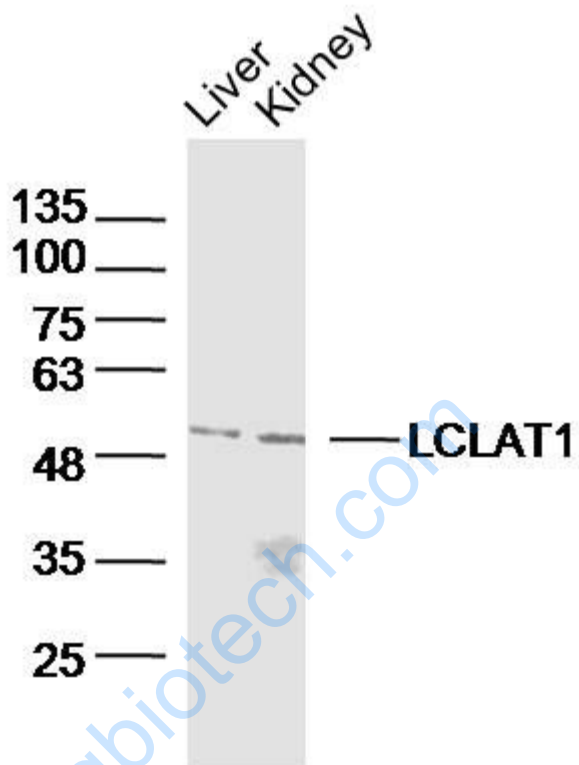
[Unigene: 662770](#) Human

[Unigene: 329194](#) Mouse

**Important Note:**

This product as supplied is intended for research use only, not for use in human, therapeutic or diagnostic applications.

Picture:



Sample:

Liver(Mouse)Lysate at 40 ug

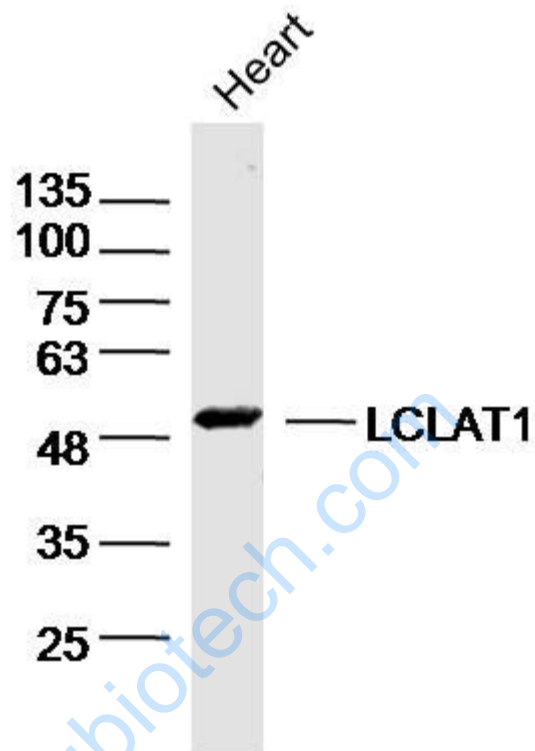
Kidney (Mouse)Lysate at 40 ug

Primary: Anti-LCLAT1(SL18190R)at 1/300 dilution

Secondary: IRDye800CW Goat Anti-RabbitIgG at 1/20000 dilution

Predicted band size: 49kD

Observed band size: 49kD



Sample: Heart (Mouse) Lysate at 40 ug

Primary: Anti-LCLAT1(SL18190R) at 1/300 dilution

Secondary: IRDye800CW Goat Anti-Rabbit IgG at 1/20000 dilution

Predicted band size: 49kD

Observed band size: 49kD