



Rabbit Anti-IGFBP1 antibody

SL1822R

Product Name:	IGFBP1
Chinese Name:	胰岛素样生长因子Binding protein1抗体
Alias:	Insulin-like Growth Factor Binding Protein 1; IGFBP-1; AFBP; Alpha pregnancy associated endometrial globulin; Amniotic fluid binding protein; Binding protein 25; Binding protein 26; Binding protein 28; Growth hormone independent binding protein; hIGFBP 1; hIGFBP1; IBP 1; IBP1; IGF binding protein 1; IGF BP25; IGFBP 1; Placental protein 12; PP12.
Organism Species:	Rabbit
Clonality:	Polyclonal
React Species:	Human,Mouse,Rat,Chicken,Pig,Cow,Horse,Sheep,
Applications:	WB=1:500-2000ELISA=1:500-1000IHC-P=1:400-800IHC-F=1:400-800IF=1:100-500 (Paraffin sections need antigen repair) not yet tested in other applications. optimal dilutions/concentrations should be determined by the end user.
Molecular weight:	30kDa
Cellular localization:	Secretory protein
Form:	Lyophilized or Liquid
Concentration:	1mg/ml
immunogen:	KLH conjugated synthetic peptide derived from human IGFBP1:150-250/259
Lsotype:	IgG
Purification:	affinity purified by Protein A
Storage Buffer:	0.01M TBS(pH7.4) with 1% BSA, 0.03% Proclin300 and 50% Glycerol.
Storage:	Store at -20 °C for one year. Avoid repeated freeze/thaw cycles. The lyophilized antibody is stable at room temperature for at least one month and for greater than a year when kept at -20°C. When reconstituted in sterile pH 7.4 0.01M PBS or diluent of antibody the antibody is stable for at least two weeks at 2-4 °C.
PubMed:	PubMed
Product Detail:	Insulin like growth factor binding protein 1 (IGFBP1) is a member of the superfamily of insulin like growth factor (IGF) binding proteins which include six high affinity IGF binding proteins (IGFBP) and at least four low affinity binding proteins referred to as

IGFBP related proteins (IGFBPrP). The IGFBP members are cysteine rich proteins with conserved cysteine residues clustered in the amino terminal and the carboxy terminal regions of the molecule. The N terminal and C terminal regions are highly homologous among rat, human and bovine sequences. Contained within IGFBP1 and 2 is an integrin receptor recognition sequence (RGD) that is responsible for promoting cell migration by an IGF independent action. IGFBPs hold a central position in IGF ligand receptor interactions through influences on both the bioavailability and distribution of IGFs in the extracellular environment. IGFBPs will either inhibit or enhance the biological activities of IGF or act in an IGF independent manner. Post translational modification of IGFBPs, including phosphorylation and proteolysis, will modify the affinities of the binding proteins for IGF and may indirectly regulate IGF actions. IGFBP1 is expressed in liver, decidua, and kidneys and is the major IGF binding protein in human amniotic fluid. In hepatocytes, IGFBP1 production is regulated at the transcriptional level due to the effects of insulin and corticosteroids. IGFBP1 is the major determinant of the level of free IGF in serum. The expression of IGFBP1 is inhibited by insulin, IGFI, and IGFII and is stimulated by glucocorticoids, thyroid hormone, and epidermal growth factor (EGF), indicating an endocrine function. IGFBP1 shows inhibitory actions on cell proliferation and differentiation, presumably by interfering with the interactions between IGF and the IGF receptor (IGFR).

Function:

IGF-binding proteins prolong the half-life of the IGFs and have been shown to either inhibit or stimulate the growth promoting effects of the IGFs on cell culture. They alter the interaction of IGFs with their cell surface receptors. Promotes cell migration.

Subunit:

Binds equally well IGF1 and IGF2.

Subcellular Location:

Secreted.

Post-translational modifications:

Phosphorylated; probably by casein kinase II. Alters the affinity of the protein for IGFs.

Similarity:

Contains 1 IGFBP N-terminal domain.
Contains 1 thyroglobulin type-1 domain.

SWISS:

P08833

Gene ID:

3484

Database links:

[Entrez Gene: 3484](#)Human

[Entrez Gene: 16006](#)Mouse

[Entrez Gene: 25685](#)Rat

[Omim: 146730](#)Human

[SwissProt: P08833](#)Human

[SwissProt: P47876](#)Mouse

[SwissProt: P21743](#)Rat

[Unigene: 642938](#)Human

[Unigene: 21300](#)Mouse

[Unigene: 34026](#)Rat

Important Note:

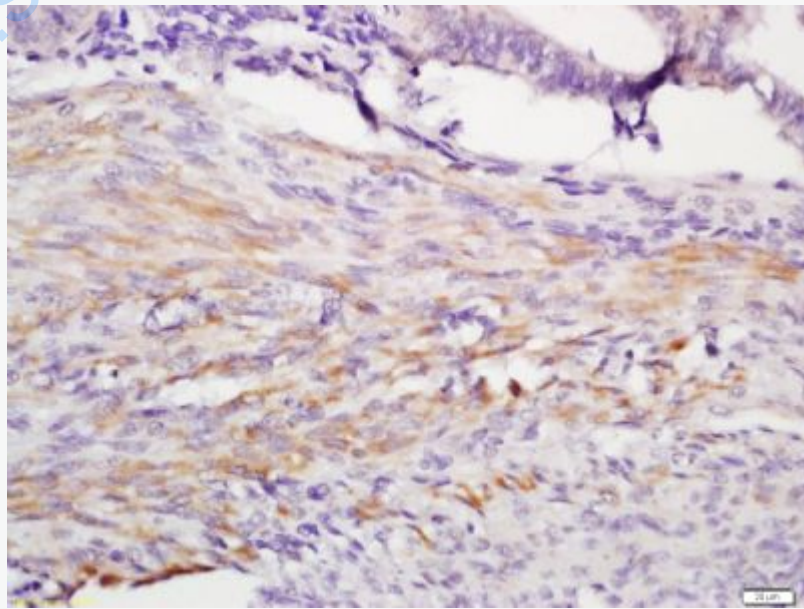
This product as supplied is intended for research use only, not for use in human, therapeutic or diagnostic applications.

Growth factors and hormones (Growth Factor and Hormones)

胰岛素样生长因子Binding protein1(IGFBP-

2)是IGF/IGFBP家族中的一个重要成员,在多种疾病尤其是Tumour中其表达明显增高,可能通过调节胰岛素样生长因子(insulin-like growth factor,IGF)发挥作用,促进Tumour的发生发展。

Picture:



Tissue/cell: muscle of human endometrium; 4% Paraformaldehyde-fixed and paraffin-embedded;

Antigen retrieval: citrate buffer (0.01M, pH 6.0), Boiling bathing for 15min; Block endogenous peroxidase by 3% Hydrogen peroxide for 30min; Blocking buffer (normal goat serum,C-0005) at 37°C for 20 min;

Incubation: Anti-IGFBP1 Polyclonal Antibody, Unconjugated(SL1822R) 1:200, overnight at 4°C, followed by conjugation to the secondary antibody(SP-0023) and DAB(C-0010) staining

www.sunlongbiotech.com