



Rabbit Anti-Inhibin beta B antibody

SL1825R

Product Name:	Inhibin beta B
Chinese Name:	抑制素βB/Inhibin β B抗体
Alias:	MGC157939; Activin A; Activin AB alpha polypeptide; Activin AB; Activin AB beta polypeptide; Activin B; Activin beta A chain; Activin beta B chain; ActivinA; ActivinAB; ActivinB; EDF; Erythroid differentiation protein; follicle stimulating hormone releasing protein; FRP; FSH releasing factor; FSH releasing protein; INHBA; INHBB; Inhibin; Inhibin beta 1; Inhibin beta 2; Inhibin beta A; Inhibin beta A chain; Inhibin beta A subunit; Inhibin beta B; Inhibin beta B chain; Inhibin beta B subunit;
Organism Species:	Rabbit
Clonality:	Polyclonal
React Species:	Human,Mouse,Rat,Dog,Pig,Cow,Sheep,Guinea Pig,
Applications:	WB=1:500-2000ELISA=1:500-1000IHC-P=1:400-800IHC-F=1:400-800 (Paraffin sections need antigen repair) not yet tested in other applications. optimal dilutions/concentrations should be determined by the end user.
Molecular weight:	13/45kDa
Cellular localization:	Secretory protein
Form:	Lyophilized or Liquid
Concentration:	1mg/ml
immunogen:	KLH conjugated synthetic peptide derived from human Inhibin beta B:251-350/407
Lsotype:	IgG
Purification:	affinity purified by Protein A
Storage Buffer:	0.01M TBS(pH7.4) with 1% BSA, 0.03% Proclin300 and 50% Glycerol.
Storage:	Store at -20 °C for one year. Avoid repeated freeze/thaw cycles. The lyophilized antibody is stable at room temperature for at least one month and for greater than a year when kept at -20°C. When reconstituted in sterile pH 7.4 0.01M PBS or diluent of antibody the antibody is stable for at least two weeks at 2-4 °C.
PubMed:	PubMed
Product Detail:	The inhibin beta B subunit joins the alpha subunit to form a pituitary FSH secretion inhibitor. Inhibin has been shown to regulate gonadal stromal cell proliferation

negatively and to have tumour-suppressor activity. In addition, serum levels of inhibin have been shown to reflect the size of granulosa-cell tumors and can therefore be used as a marker for primary as well as recurrent disease. Because expression in gonadal and various extragonadal tissues may vary severalfold in a tissue-specific fashion, it is proposed that inhibin may be both a growth/differentiation factor and a hormone. Furthermore, the beta B subunit forms a homodimer, activin B, and also joins with the beta A subunit to form a heterodimer, activin AB, both of which stimulate FSH secretion. [provided by RefSeq].

Subcellular Location:

Secreted.

Similarity:

Belongs to the TGF-beta family.

SWISS:

P09529

Gene ID:

3625

Database links:

[Entrez Gene: 3625](#)Human

[Entrez Gene: 16324](#)Mouse

[Entrez Gene: 25196](#)Rat

[Oimim: 147390](#)Human

[SwissProt: P09529](#)Human

[SwissProt: Q04999](#)Mouse

[SwissProt: P17491](#)Rat

[Unigene: 1735](#)Human

[Unigene: 3092](#)Mouse

[Unigene: 35074](#)Rat

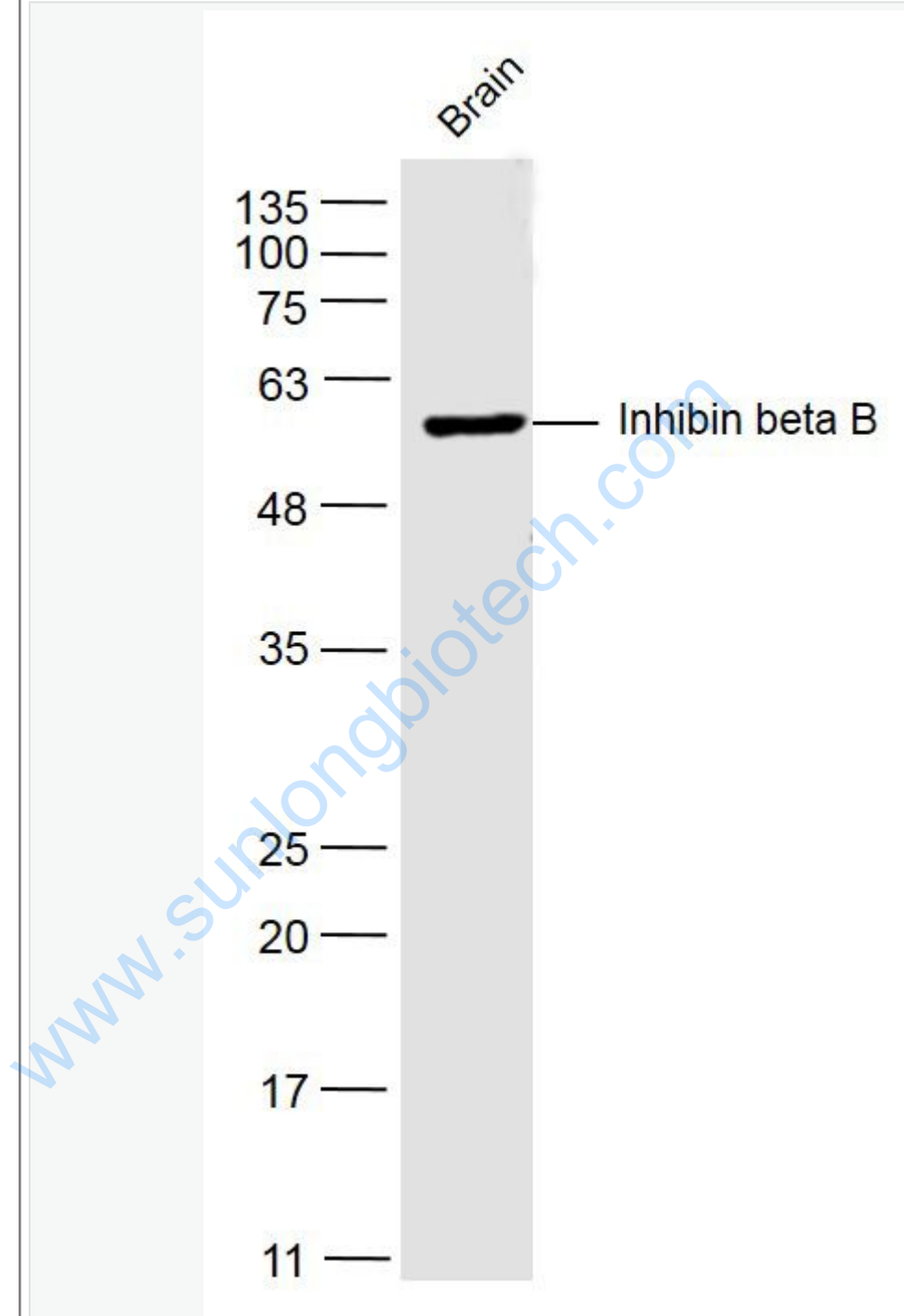
Important Note:

This product as supplied is intended for research use only, not for use in human, therapeutic or diagnostic applications.

抑制素是转化生长因子TGFβ超级家族, 主要由雌性动物卵巢颗粒细胞和雄性动物辜丸的Sertoli细胞分泌. 研究表明,抑制素具有内分泌和旁分泌物的作用:既可通过复

杂的反馈机理,调节体液FSH水平。

Picture:



Sample:

Brain (Mouse) Lysate at 40 ug

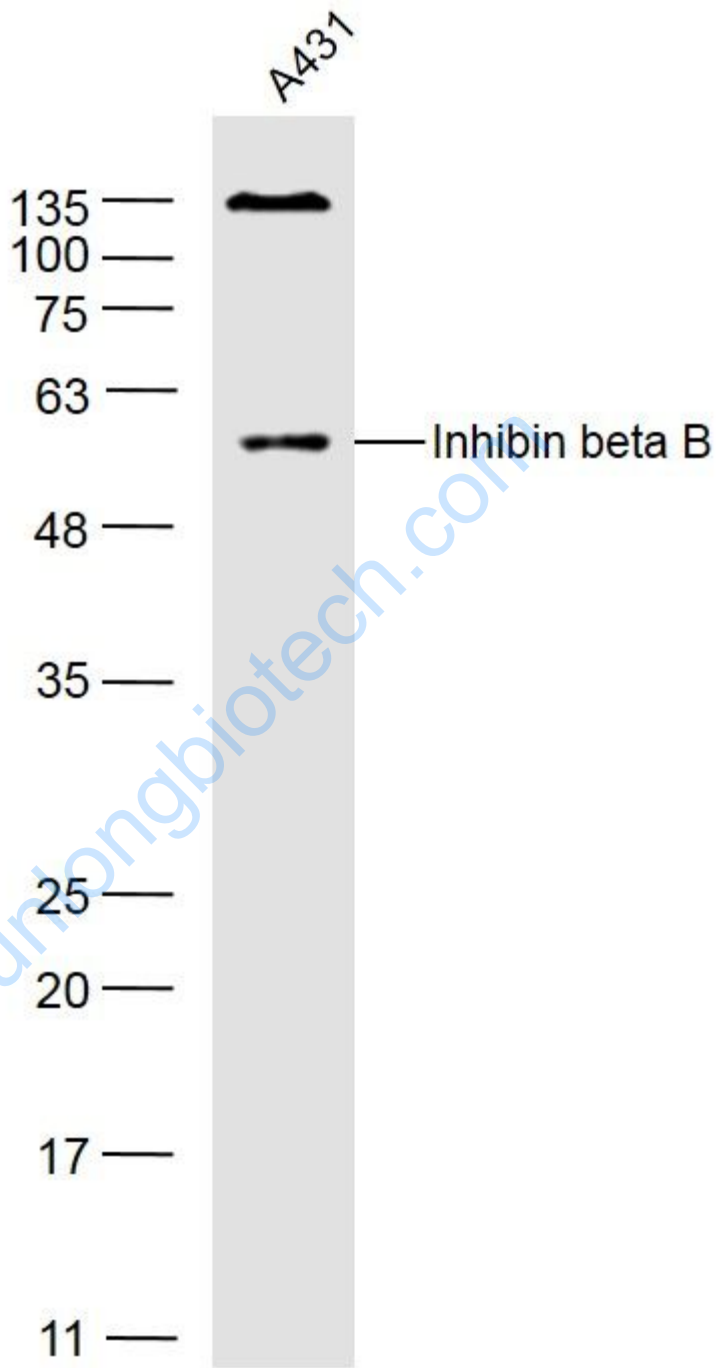
Primary: Anti- Inhibin beta B (SL1825R) at 1/300 dilution

Secondary: IRDye800CW Goat Anti-Rabbit IgG at 1/20000 dilution

Predicted band size: 45 kD

Observed band size: 50 kD

www.sunlongbiotech.com



Sample:

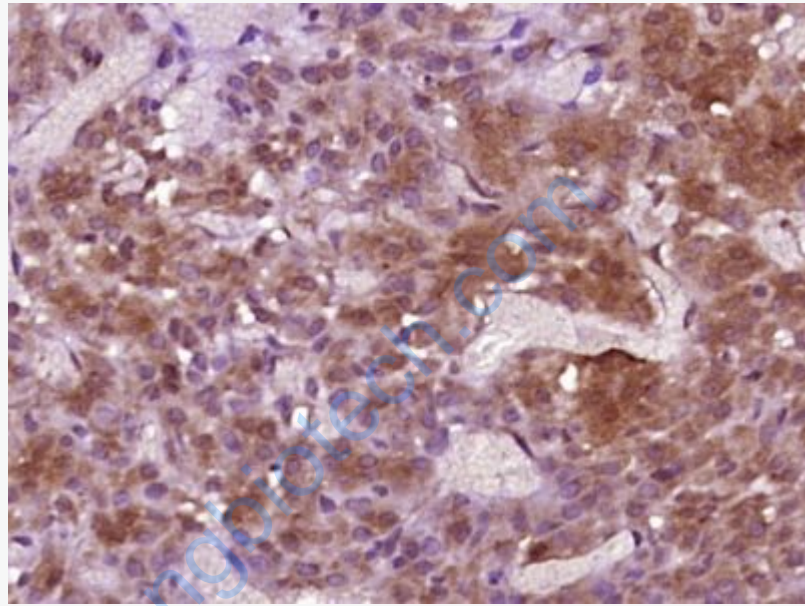
A431(Human) Cell Lysate at 40 ug

Primary: Anti- Inhibin beta B (SL1825R) at 1/300 dilution

Secondary: IRDye800CW Goat Anti-Rabbit IgG at 1/20000 dilution

Predicted band size: 45 kD

Observed band size: 50 kD



Paraformaldehyde-fixed, paraffin embedded (rat ovary tissue); Antigen retrieval by boiling in sodium citrate buffer (pH6.0) for 15min; Block endogenous peroxidase by 3% hydrogen peroxide for 20 minutes; Blocking buffer (normal goat serum) at 37°C for 30min; Antibody incubation with (Inhibin beta B) Polyclonal Antibody, Unconjugated (SL1825R) at 1:400 overnight at 4°C, followed by operating according to SP Kit(Rabbit) (sp-0023) instructions and DAB staining.