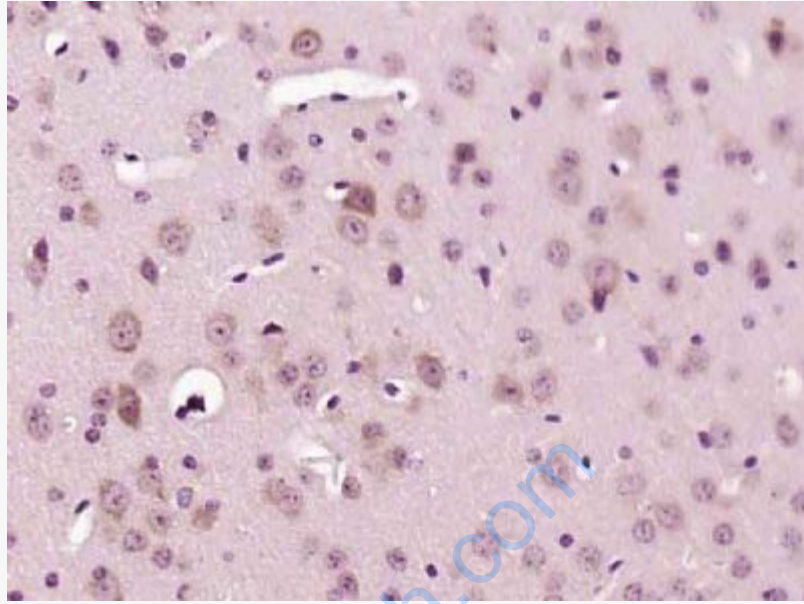




Rabbit Anti-LIMCH1 antibody

SL18273R

Product Name:	LIMCH1
Chinese Name:	LIMCH1蛋白抗体
Alias:	DKFZp434I0312; DKFZp686A01247; DKFZp686B2470; DKFZp686G18243; DKFZp686G2094; DKFZp781C1754; DKFZp781I1455; KIAA1102; LIM and calponin homology domains 1; LIM and calponin homology domains containing protein 1; LIM and calponin homology domains-containing protein 1; LIMC1_HUMAN; LIMCH 1; limch1; LIMCH1A; LMO7B; MGC72127; OTTHUMP00000218619.
Organism Species:	Rabbit
Clonality:	Polyclonal
React Species:	Human,Mouse,Rat,Chicken,Dog,Pig,Cow,Horse,Rabbit,Sheep,
Applications:	ELISA=1:500-1000IHC-P=1:400-800IHC-F=1:400-800ICC=1:100-500IF=1:100-500 (Paraffin sections need antigen repair) not yet tested in other applications. optimal dilutions/concentrations should be determined by the end user.
Molecular weight:	122kDa
Cellular localization:	cytoplasmic
Form:	Lyophilized or Liquid
Concentration:	1mg/ml
immunogen:	KLH conjugated synthetic peptide derived from human LIMCH1:201-300/1083
Lsotype:	IgG
Purification:	affinity purified by Protein A
Storage Buffer:	0.01M TBS(pH7.4) with 1% BSA, 0.03% Proclin300 and 50% Glycerol.
Storage:	Store at -20 °C for one year. Avoid repeated freeze/thaw cycles. The lyophilized antibody is stable at room temperature for at least one month and for greater than a year when kept at -20°C. When reconstituted in sterile pH 7.4 0.01M PBS or diluent of antibody the antibody is stable for at least two weeks at 2-4 °C.
PubMed:	PubMed
Product Detail:	



Picture:

Paraformaldehyde-fixed, paraffin embedded (Mouse brain); Antigen retrieval by boiling in sodium citrate buffer (pH6.0) for 15min; Block endogenous peroxidase by 3% hydrogen peroxide for 20 minutes; Blocking buffer (normal goat serum) at 37°C for 30min; Antibody incubation with (LIMCH1) Polyclonal Antibody, Unconjugated (SL18273R) at 1:500 overnight at 4°C, followed by a conjugated secondary (sp-0023) for 20 minutes and DAB staining.