



Rabbit Anti-LIN9 antibody

SL18283R

| | |
|-------------------------------|--|
| Product Name: | LIN9 |
| Chinese Name: | LIN9蛋白抗体 |
| Alias: | BARA; Beta subunit-associated regulator of apoptosis; Beta-subunit associated regulator of apoptosis; hLin-9; huLin-9; lin-9; lin9; LIN9_HUMAN; pRB-associated protein; Protein lin-9 homolog; TGS; TUDOR gene similar protein; Type I interferon receptor beta chain-associated protein. |
| Organism Species: | Rabbit |
| Clonality: | Polyclonal |
| React Species: | Human,Mouse,Cynomolgus Monkey |
| Applications: | WB=1:500-2000ELISA=1:500-1000IHC-P=1:400-800IHC-F=1:400-800ICC=1:100-500IF=1:100-500 (Paraffin sections need antigen repair) not yet tested in other applications. optimal dilutions/concentrations should be determined by the end user. |
| Molecular weight: | 62kDa |
| Cellular localization: | The nucleus |
| Form: | Lyophilized or Liquid |
| Concentration: | 1mg/ml |
| immunogen: | KLH conjugated synthetic peptide derived from human LIN9: |
| Lsotype: | IgG |
| Purification: | affinity purified by Protein A |
| Storage Buffer: | 0.01M TBS(pH7.4) with 1% BSA, 0.03% Proclin300 and 50% Glycerol. |
| Storage: | Store at -20 °C for one year. Avoid repeated freeze/thaw cycles. The lyophilized antibody is stable at room temperature for at least one month and for greater than a year when kept at -20°C. When reconstituted in sterile pH 7.4 0.01M PBS or diluent of antibody the antibody is stable for at least two weeks at 2-4 °C. |
| PubMed: | PubMed |
| Product Detail: | This gene encodes a tumor suppressor protein that inhibits DNA synthesis and oncogenic transformation through association with the retinoblastoma 1 protein. The encoded protein also interacts with a complex of other cell cycle regulators to repress cell cycle-dependent gene expression in non-dividing cells. Alternatively spliced |

transcript variants encoding multiple isoforms have been observed for this gene.
[provided by RefSeq, Jul 2012]

Function:

Acts as a tumor suppressor. Inhibits DNA synthesis. Its ability to inhibit oncogenic transformation is mediated through its association with RB1. Plays a role in the expression of genes required for the G1/S transition.

Subcellular Location:

Nucleus > nucleoplasm. Found in perinucleolar structures. Associated with chromatin.

Tissue Specificity:

Expressed in thymus and testis.

Similarity:

Belongs to the lin-9 family.

SWISS:

Q5TKA1

Gene ID:

286826

Database links:

[Entrez Gene: 286826](#) Human

[Entrez Gene: 421316](#) Chicken

[Entrez Gene: 72568](#) Mouse

[Entrez Gene: 689523](#) Rat

[Entrez Gene: 323027](#) Zebrafish

[Entrez Gene: 560867](#) Zebrafish

[Omim: 609375](#) Human

[SwissProt: Q5TKA1](#) Human

[SwissProt: Q8C735](#) Mouse

[SwissProt: Q5RHHQ8](#) Zebrafish

[Unigene: 120817](#) Human

[Unigene: 275044](#) Mouse

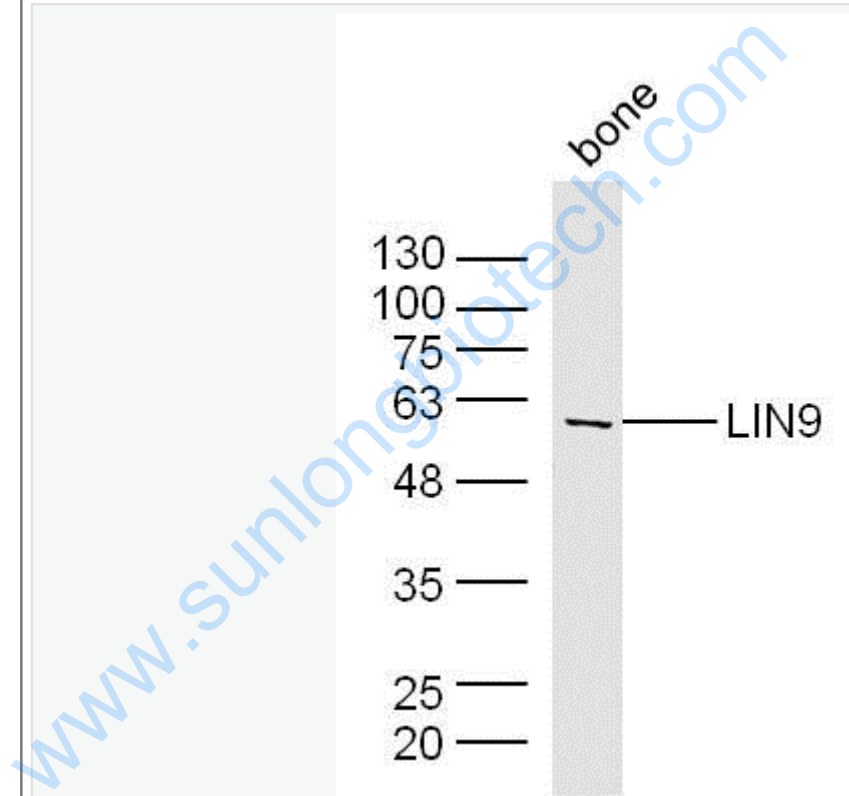
[Unigene: 214693](#) Rat

[Unigene: 76676](#) Zebrafish

Important Note:

This product as supplied is intended for research use only, not for use in human, therapeutic or diagnostic applications.

Picture:



Sample:

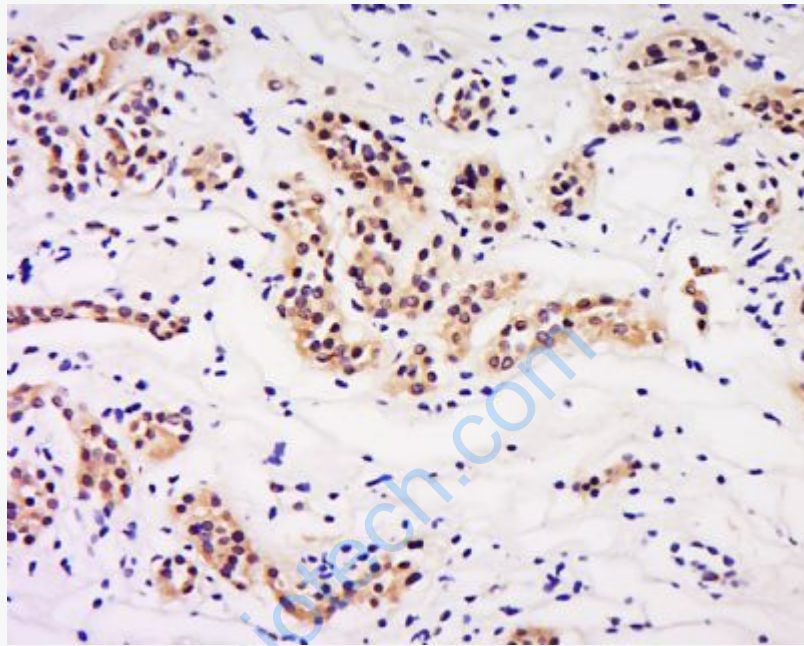
Bone (Mouse) Lysate at 40 ug

Primary: Anti-LIN9 (SL18283R) at 1/300 dilution

Secondary: IRDye800CW Goat Anti-Rabbit IgG at 1/20000 dilution

Predicted band size: 62 kD

Observed band size: 62 kD



Tissue/cell: human kidney tissue; 4% Paraformaldehyde-fixed and paraffin-embedded;

Antigen retrieval: citrate buffer (0.01M, pH 6.0), Boiling bathing for 15min; Block endogenous peroxidase by 3% Hydrogen peroxide for 30min; Blocking buffer (normal goat serum,C-0005) at 37°C for 20 min;

Incubation: Anti-LIN9 Polyclonal Antibody, Unconjugated(SL18283R) 1:200, overnight at 4°C, followed by conjugation to the secondary antibody(SP-0023) and DAB(C-0010) staining