



Rabbit Anti-LINS antibody

SL18286R

Product Name:	LINS
Chinese Name:	LINS蛋白抗体
Alias:	LINES_HUMAN; LINS; Protein Lines homolog 1; Protein Lines homolog; Wnt-signaling molecule Lines homolog 1.
Organism Species:	Rabbit
Clonality:	Polyclonal
React Species:	Human,
Applications:	WB=1:500-2000ELISA=1:500-1000IHC-P=1:400-800IHC-F=1:400-800ICC=1:100-500IF=1:100-500 (Paraffin sections need antigen repair) not yet tested in other applications. optimal dilutions/concentrations should be determined by the end user.
Molecular weight:	86kDa
Cellular localization:	The nucleus
Form:	Lyophilized or Liquid
Concentration:	1mg/ml
immunogen:	KLH conjugated synthetic peptide derived from human LINS:121-220/757
Lsotype:	IgG
Purification:	affinity purified by Protein A
Storage Buffer:	0.01M TBS(pH7.4) with 1% BSA, 0.03% Proclin300 and 50% Glycerol.
Storage:	Store at -20 °C for one year. Avoid repeated freeze/thaw cycles. The lyophilized antibody is stable at room temperature for at least one month and for greater than a year when kept at -20°C. When reconstituted in sterile pH 7.4 0.01M PBS or diluent of antibody the antibody is stable for at least two weeks at 2-4 °C.
PubMed:	PubMed
Product Detail:	The Drosophila segment polarity gene lin encodes a protein, lines, which plays important roles in development of the epidermis and hindgut. This gene encodes a protein containing a lines-like domain. This gene is located on chromosome 15 and clustered with the gene encoding ankyrin repeat and SOCS box-containing protein 7. [provided by RefSeq, Sep 2010]

Tissue Specificity:

Expressed in adult testis, prostate, prostate, spleen, thymus, skeletal muscle, fetal kidney and brain.

Similarity:

Belongs to the protein lines family.

SWISS:

Q8NG48

Gene ID:

55180

Database links:

[Entrez Gene: 55180](#) Human

[Oimim: 610350](#) Human

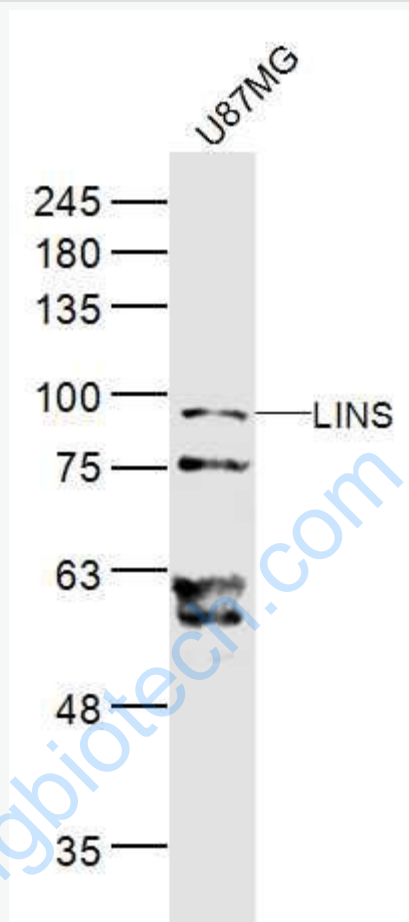
[SwissProt: Q8NG48](#) Human

[Unigene: 105633](#) Human

Important Note:

This product as supplied is intended for research use only, not for use in human, therapeutic or diagnostic applications.

Picture:



Sample:

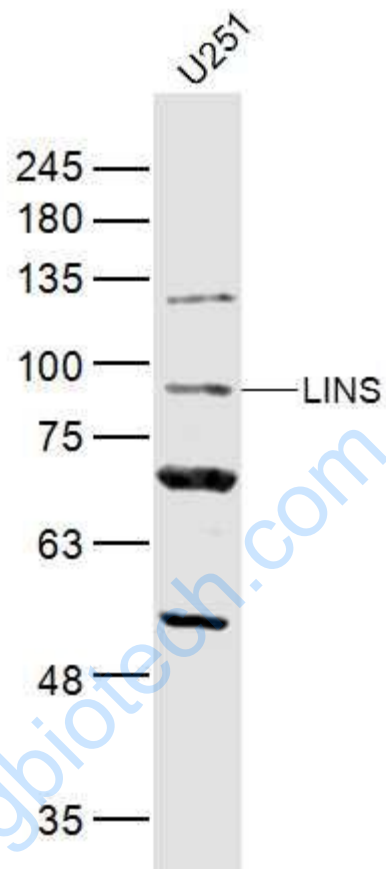
U87MG(Human) Cell Lysate at 40 ug

Primary: Anti-LINS (SL18286R) at 1/300 dilution

Secondary: IRDye800CW Goat Anti-Rabbit IgG at 1/20000 dilution

Predicted band size: 86 kD

Observed band size: 86 kD



Sample:

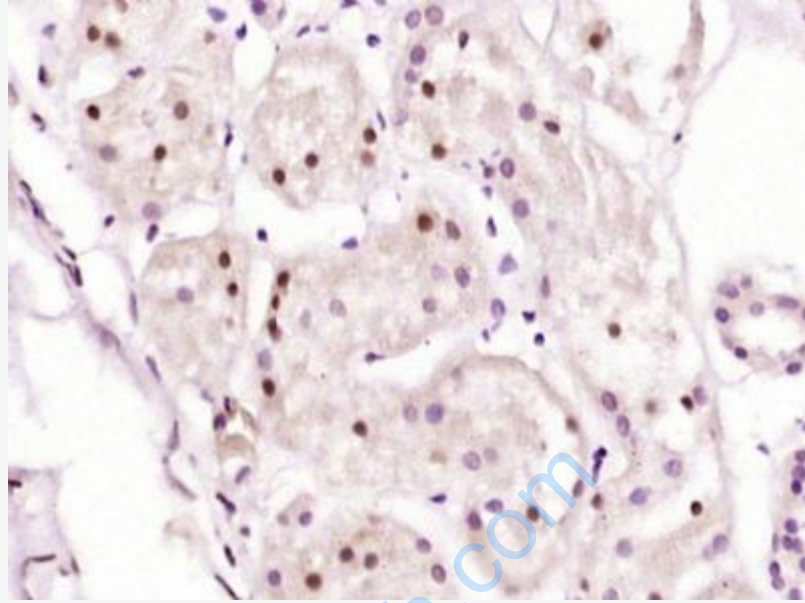
U251(Human) Cell Lysate at 40 ug

Primary: Anti-LINS (SL18286R) at 1/300 dilution

Secondary: IRDye800CW Goat Anti-Rabbit IgG at 1/20000 dilution

Predicted band size: 86 kD

Observed band size: 86 kD



Paraformaldehyde-fixed, paraffin embedded (Human kidney); Antigen retrieval by boiling in sodium citrate buffer (pH6.0) for 15min; Block endogenous peroxidase by 3% hydrogen peroxide for 20 minutes; Blocking buffer (normal goat serum) at 37°C for 30min; Antibody incubation with (LINS) Polyclonal Antibody, Unconjugated (SL18286R) at 1:400 overnight at 4°C, followed by operating according to SP Kit(Rabbit) (sp-0023) instructions and DAB staining.