



Rabbit Anti-LIPC antibody

SL18288R

Product Name:	LIPC
Chinese Name:	肝脂酶抗体
Alias:	HDLCQ12; Hepatic lipase; Hepatic triacylglycerol lipase; HL; HTGL; Lipase member C; lipC; LIPC_HUMAN; LIPH.
Organism Species:	Rabbit
Clonality:	Polyclonal
React Species:	Human,Mouse,Rat,Dog,Cow,Sheep,
Applications:	WB=1:500-2000ELISA=1:500-1000IHC-P=1:400-800IHC-F=1:400-800ICC=1:100-500IF=1:100-500 (Paraffin sections need antigen repair) not yet tested in other applications. optimal dilutions/concentrations should be determined by the end user.
Molecular weight:	53kDa
Cellular localization:	Secretory protein
Form:	Lyophilized or Liquid
Concentration:	1mg/ml
immunogen:	KLH conjugated synthetic peptide derived from human LIPC:301-400/499
Lsotype:	IgG
Purification:	affinity purified by Protein A
Storage Buffer:	0.01M TBS(pH7.4) with 1% BSA, 0.03% Proclin300 and 50% Glycerol.
Storage:	Store at -20 °C for one year. Avoid repeated freeze/thaw cycles. The lyophilized antibody is stable at room temperature for at least one month and for greater than a year when kept at -20°C. When reconstituted in sterile pH 7.4 0.01M PBS or diluent of antibody the antibody is stable for at least two weeks at 2-4 °C.
PubMed:	PubMed
Product Detail:	LIPC encodes hepatic triglyceride lipase, which is expressed in liver. LIPC has the dual functions of triglyceride hydrolase and ligand/bridging factor for receptor-mediated lipoprotein uptake. [provided by RefSeq, Jul 2008] Function: Hepatic lipase has the capacity to catalyze hydrolysis of phospholipids, mono-, di-, and

triglycerides, and acyl-CoA thioesters. It is an important enzyme in HDL metabolism. Hepatic lipase binds heparin.

Subcellular Location:

Secreted.

DISEASE:

Defects in LIPC are the cause of hepatic lipase deficiency (HL deficiency) [MIM:151670].

Similarity:

Belongs to the AB hydrolase superfamily. Lipase family. Contains 1 PLAT domain.

SWISS:

P11150

Gene ID:

3990

Database links:

[Entrez Gene: 3990](#) Human

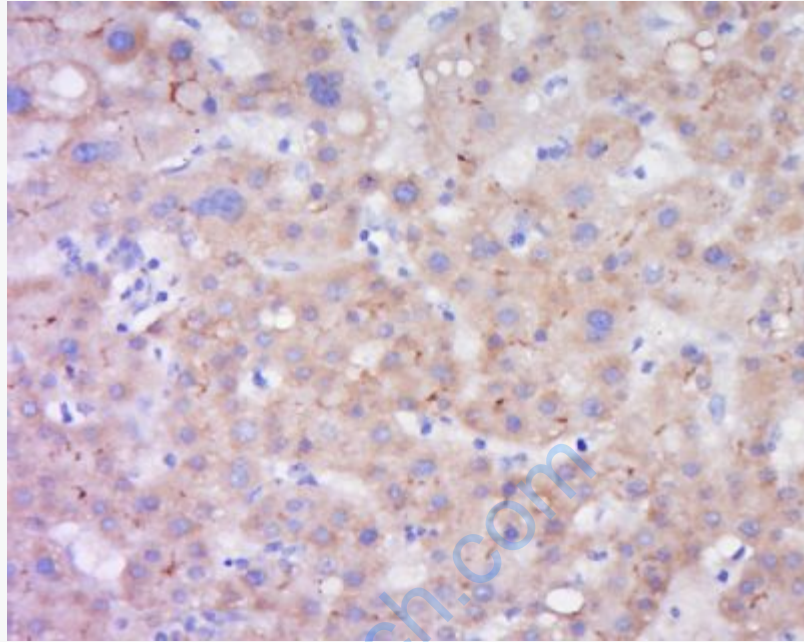
[Omir: 151670](#) Human

[SwissProt: P11150](#) Human

[Unigene: 654472](#) Human

Important Note:

This product as supplied is intended for research use only, not for use in human, therapeutic or diagnostic applications.



Picture:

Tissue/cell: human liver carcinoma; 4% Paraformaldehyde-fixed and paraffin-embedded;

Antigen retrieval: citrate buffer (0.01M, pH 6.0), Boiling bathing for 15min; Block endogenous peroxidase by 3% Hydrogen peroxide for 30min; Blocking buffer (normal goat serum,C-0005) at 37°C for 20 min;

Incubation: Anti-LIPC Polyclonal Antibody, Unconjugated(SL18288R) 1:500, overnight at 4°C, followed by conjugation to the secondary antibody(SP-0023) and DAB(C-0010) staining