



Rabbit Anti-LIPM/Lipase M antibody

SL18293R

Product Name:	LIPM/Lipase M
Chinese Name:	脂肪水解酶LIPM抗体
Alias:	Lipase family member M1; Lipase like ab hydrolase domain containing 3; Lipase M; Lipase member M; Lipase-like abhydrolase domain-containing protein 3; LIPL3; Lipm; LIPM HUMAN.
Organism Species:	Rabbit
Clonality:	Polyclonal
React Species:	Human,Mouse,Rat,Dog,Pig,Cow,Horse,Rabbit,Sheep,
Applications:	WB=1:500-2000ELISA=1:500-1000IHC-P=1:400-800IHC-F=1:400-800ICC=1:100-500IF=1:100-500 (Paraffin sections need antigen repair) not yet tested in other applications. optimal dilutions/concentrations should be determined by the end user.
Molecular weight:	44kDa
Cellular localization:	Secretory protein
Form:	Lyophilized or Liquid
Concentration:	1mg/ml
immunogen:	KLH conjugated synthetic peptide derived from human LIPM/Lipase M:261-360/423
Lsotype:	IgG
Purification:	affinity purified by Protein A
Storage Buffer:	0.01M TBS(pH7.4) with 1% BSA, 0.03% Proclin300 and 50% Glycerol.
Storage:	Store at -20 °C for one year. Avoid repeated freeze/thaw cycles. The lyophilized antibody is stable at room temperature for at least one month and for greater than a year when kept at -20°C. When reconstituted in sterile pH 7.4 0.01M PBS or diluent of antibody the antibody is stable for at least two weeks at 2-4 °C.
PubMed:	PubMed
Product Detail:	Plays a highly specific role in the last step of keratinocyte differentiation. May have an essential function in lipid metabolism of the most differentiated epidermal layers. Subcellular Location: Secreted.

Tissue Specificity:

Exclusively expressed in the epidermis within the granular keratinocytes.

Similarity:

Belongs to the AB hydrolase superfamily. Lipase family.

SWISS:

Q5VYY2

Gene ID:

340654

Database links:

[Entrez Gene: 340654](#) Human

[Omid: 613923](#) Human

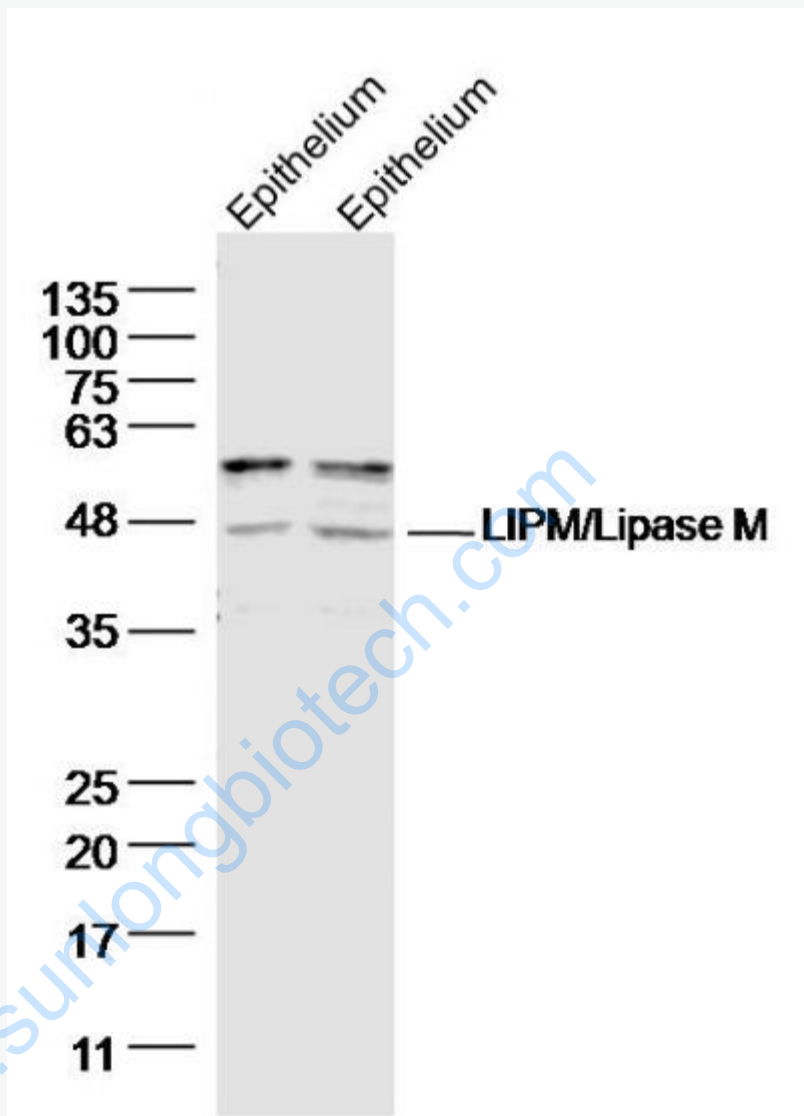
[SwissProt: Q5VYY2](#) Human

[Unigene: 55118](#) Human

Important Note:

This product as supplied is intended for research use only, not for use in human, therapeutic or diagnostic applications.

Picture:



Epithelium (rat) Lysate at 40 ug

Epithelium (rat) Lysate at 40 ug

Primary: Anti-LIPM/LipaseM (SL18293R) at 1/300 dilution

Secondary: IRDye800CW Goat Anti-Rabbit IgG at 1/20000 dilution

Predicted band size: 44 kD

Observed band size: 44 kD