



Rabbit Anti-IL-15 antibody

SL1829R

Product Name:	IL-15
Chinese Name:	白介素15抗体
Alias:	Interleukin-15; IL 15; Interleukin 15; Interleukin15; MGC9721; IL15; IL15 HUMAN.
Organism Species:	Rabbit
Clonality:	Polyclonal
React Species:	Human,Mouse,Rat,
Applications:	WB=1:500-2000ELISA=1:500-1000IHC-P=1:400-800IHC-F=1:400-800Flow-Cyt=3ug/testIF=1:100-500 (Paraffin sections need antigen repair) not yet tested in other applications. optimal dilutions/concentrations should be determined by the end user.
Molecular weight:	12.7kDa
Cellular localization:	The nucleuscytoplasmicThe cell membraneSecretory protein
Form:	Lyophilized or Liquid
Concentration:	1mg/ml
immunogen:	KLH conjugated synthetic peptide derived from human IL-15:81-162/162
Lsotype:	IgG
Purification:	affinity purified by Protein A
Storage Buffer:	0.01M TBS(pH7.4) with 1% BSA, 0.03% Proclin300 and 50% Glycerol.
Storage:	Store at -20 °C for one year. Avoid repeated freeze/thaw cycles. The lyophilized antibody is stable at room temperature for at least one month and for greater than a year when kept at -20°C. When reconstituted in sterile pH 7.4 0.01M PBS or diluent of antibody the antibody is stable for at least two weeks at 2-4 °C.
PubMed:	PubMed
Product Detail:	IL15 (114 amino acids) is a cytokine that regulates T and natural killer cell activation and proliferation. It has a predicted molecular mass of approximately 12.5 kDa. Human IL15 shares approximately 97% and 73% amino acid sequence identity with simian and mouse IL15, respectively. Both human and simian IL15 are active on mouse cells. IL15 was initially isolated from the simian kidney epithelial cell line CV1/EBNA. It has also been isolated from mouse and human cell sources. The cytokines IL15 and IL2 share many biological properties and stimulatory activities (T, B, and NK cells). Both IL15

and IL2 stimulate mouse CTLL2 cells. In activated peripheral blood T lymphocytes, IL2 is highly expressed but the expression of IL15 is not detectable. There is no sequence homology between IL15 and IL2, though computer modeling indicates both possess a four alpha helical bundle structure. IL15 competes for binding sites with IL2, as both IL2 and IL15 stimulate the growth of cells through the IL2 receptor. IL15 mRNA is expressed in many cell types and tissues including adherent peripheral blood mononuclear cells, fibroblasts, and epithelial cells, monocytes, placenta, and skeletal muscle.

Function:

Cytokine that stimulates the proliferation of T-lymphocytes. Stimulation by IL-15 requires interaction of IL-15 with components of IL-2R, including IL-2R beta and probably IL-2R gamma but not IL-2R alpha.

Subcellular Location:

Isoform IL15-S48AA: Secreted. Isoform IL15-S21AA: Cytoplasm. Nucleus.

Note=IL15-S21AA is not secreted, but rather is stored intracellularly, appearing in the nucleus and cytoplasmic components.

Tissue Specificity:

Most abundant in placenta and skeletal muscle. It is also detected in the heart, lung, liver and kidney. IL15-S21AA is preferentially expressed in tissues such as testis and thymus.

Similarity:

Belongs to the IL-15/IL-21 family.

SWISS:

P40933

Gene ID:

3600

Database links:

[Entrez Gene: 3600](#)Human

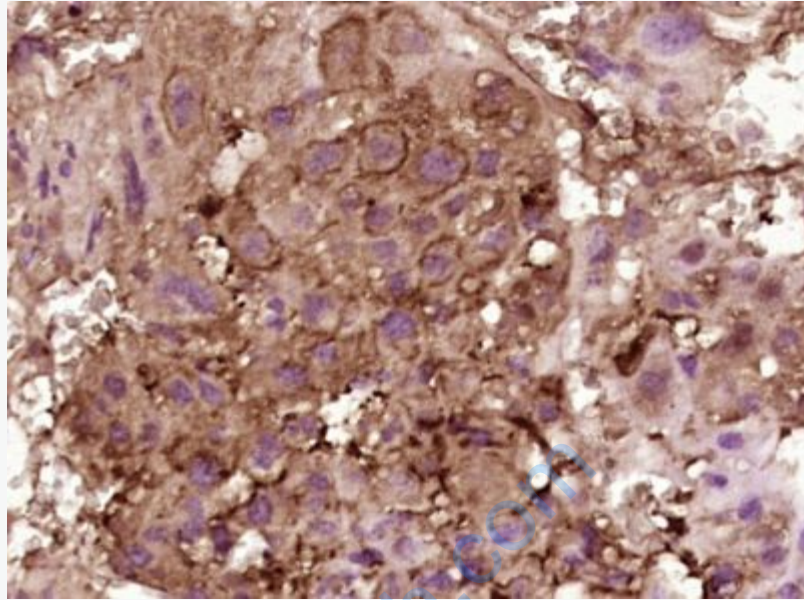
[Omim: 600554](#)Human

[SwissProt: P40933](#)Human

[Unigene: 654378](#)Human

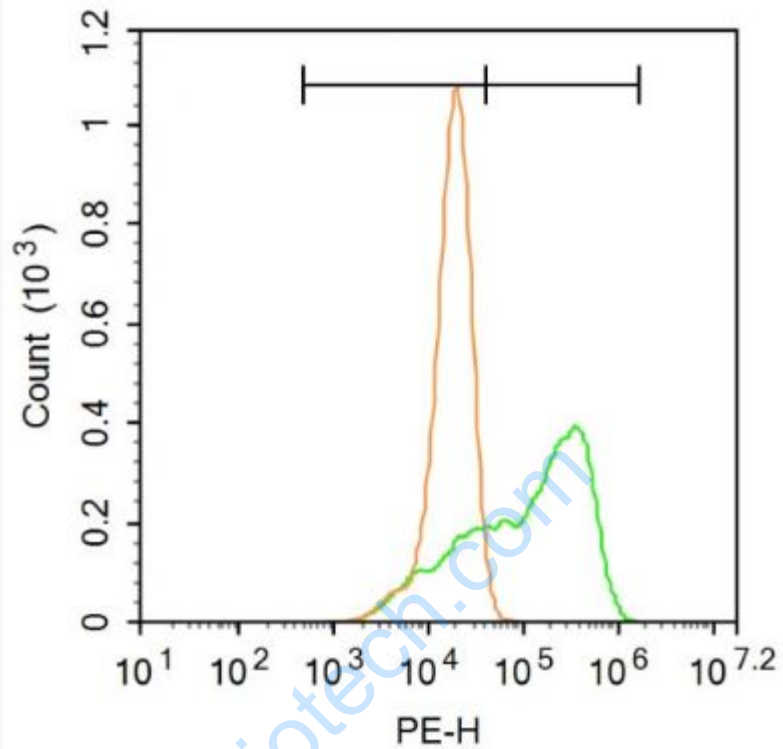
Important Note:

This product as supplied is intended for research use only, not for use in human, therapeutic or diagnostic applications.



Picture:

Paraformaldehyde-fixed, paraffin embedded (Mouse placenta); Antigen retrieval by boiling in sodium citrate buffer (pH6.0) for 15min; Block endogenous peroxidase by 3% hydrogen peroxide for 20 minutes; Blocking buffer (normal goat serum) at 37°C for 30min; Antibody incubation with (IL-15) Polyclonal Antibody, Unconjugated (SL1829R) at 1:400 overnight at 4°C, followed by operating according to SP Kit(Rabbit) (sp-0023) instructions and DAB staining.



Blank control:A549.

Primary Antibody (green line): Rabbit Anti-IL-15 antibody (SL1829R)

Dilution: $1\mu\text{g} / 10^6$ cells;

Isotype Control Antibody (orange line): Rabbit IgG .

Secondary Antibody : Goat anti-rabbit IgG-PE

Dilution: $3\mu\text{g} / \text{test}$.

Protocol

The cells were fixed with 4% PFA (10min at room temperature)and then permeabilized with 90% ice-cold methanol for 20 min at -20°C . The cells were then incubated in 5% BSA to block non-specific protein-protein interactions for 30 min at room temperature .Cells stained with Primary Antibody for 30 min at room temperature. The secondary antibody used for 40 min at room temperature.

	Acquisition of 20,000 events was performed.
--	---

www.sunlongbiotech.com