



Rabbit Anti-LIX1L antibody

SL18302R

Product Name:	LIX1L
Chinese Name:	Lix1样蛋白抗体
Alias:	Lix1 homolog (mouse) like; LIX1-like protein; Lix1l; LIX1L_HUMAN; MGC46719.
Organism Species:	Rabbit
Clonality:	Polyclonal
React Species:	Human,Mouse,Rat,Chicken,Dog,Pig,Cow,Horse,Rabbit,Sheep,
Applications:	ELISA=1:500-1000IHC-P=1:400-800IHC-F=1:400-800ICC=1:100-500IF=1:100-500 (Paraffin sections need antigen repair) not yet tested in other applications. optimal dilutions/concentrations should be determined by the end user.
Molecular weight:	37kDa
Cellular localization:	cytoplasmic
Form:	Lyophilized or Liquid
Concentration:	1mg/ml
immunogen:	KLH conjugated synthetic peptide derived from human LIX1L:61-160/337
Lsotype:	IgG
Purification:	affinity purified by Protein A
Storage Buffer:	0.01M TBS(pH7.4) with 1% BSA, 0.03% Proclin300 and 50% Glycerol.
Storage:	Store at -20 °C for one year. Avoid repeated freeze/thaw cycles. The lyophilized antibody is stable at room temperature for at least one month and for greater than a year when kept at -20°C. When reconstituted in sterile pH 7.4 0.01M PBS or diluent of antibody the antibody is stable for at least two weeks at 2-4 °C.
PubMed:	PubMed
Product Detail:	LIX1 (protein limb expression 1 homolog), also known as C5orf11, is a 282 amino acid protein belonging to the LIX1 family. Other members of the LIX1 family include LIX1L (LIX1-like protein). Although the function of LIX1 is unknown, the predicted secondary structure is compatible with a role in RNA metabolism. The C-terminal 100 amino acids of LIX1 also have a 98% probability of forming a coiled-coil structure. Therefore, LIX1 may interact with the many coiled-coil proteins found in most cells. LIX1 expression is largely restricted to the central nervous system, primarily in spinal motor neurons. The

gene encoding LIX1 maps to human chromosome 5q15 and mouse chromosome 17 A3.2.

Similarity:

Belongs to the LIX1 family.

SWISS:

Q8IVB5

Gene ID:

128077

Database links:

[Entrez Gene: 128077](#) Human

[Entrez Gene: 280411](#) Mouse

[Entrez Gene: 499677](#) Rat

[SwissProt: Q8IVB5](#) Human

[SwissProt: Q8BQ89](#) Mouse

[SwissProt: Q5PQQ7](#) Rat

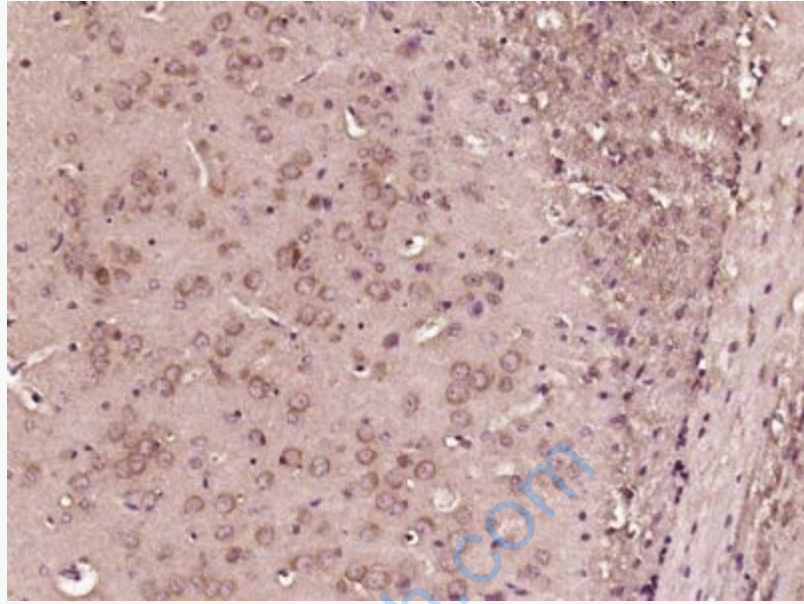
[Unigene: 632435](#) Human

[Unigene: 482147](#) Mouse

[Unigene: 3632](#) Rat

Important Note:

This product as supplied is intended for research use only, not for use in human, therapeutic or diagnostic applications.



Picture:

Paraformaldehyde-fixed, paraffin embedded (Mouse brain); Antigen retrieval by boiling in sodium citrate buffer (pH6.0) for 15min; Block endogenous peroxidase by 3% hydrogen peroxide for 20 minutes; Blocking buffer (normal goat serum) at 37°C for 30min; Antibody incubation with (LIX1L) Polyclonal Antibody, Unconjugated (SL18302R) at 1:400 overnight at 4°C, followed by operating according to SP Kit(Rabbit) (sp-0023) instructions and DAB staining.