



Rabbit Anti-LMF2 antibody

SL18312R

Product Name:	LMF2
Chinese Name:	脂肪酶成熟因子2抗体
Alias:	Lipase maturation factor 2; OTTHUMP00000196605; TMEM112B; TMEM153; Transmembrane protein 112B; Transmembrane protein 153.
Organism Species:	Rabbit
Clonality:	Polyclonal
React Species:	Human,Mouse,Rat,
Applications:	WB=1:500-2000ELISA=1:500-1000IHC-P=1:400-800IHC-F=1:400-800ICC=1:100-500IF=1:100-500 (Paraffin sections need antigen repair) not yet tested in other applications. optimal dilutions/concentrations should be determined by the end user.
Molecular weight:	80kDa
Cellular localization:	cytoplasmic
Form:	Lyophilized or Liquid
Concentration:	1mg/ml
immunogen:	KLH conjugated synthetic peptide derived from human LMF2:371-470/707
Lsotype:	IgG
Purification:	affinity purified by Protein A
Storage Buffer:	0.01M TBS(pH7.4) with 1% BSA, 0.03% Proclin300 and 50% Glycerol.
Storage:	Store at -20 °C for one year. Avoid repeated freeze/thaw cycles. The lyophilized antibody is stable at room temperature for at least one month and for greater than a year when kept at -20°C. When reconstituted in sterile pH 7.4 0.01M PBS or diluent of antibody the antibody is stable for at least two weeks at 2-4 °C.
PubMed:	PubMed
Product Detail:	LMF2 is involved in the maturation of specific proteins in the endoplasmic reticulum. May be required for maturation and transport of active lipoprotein lipase (LPL) through the secretory pathway. There are 3 isoforms. Subcellular Location: Endoplasmic reticulum membrane

Similarity:

Belongs to the lipase maturation factor family.

SWISS:

Q9BU23

Gene ID:

91289

Database links:

[Entrez Gene: 91289](#) Human

[Entrez Gene: 105847](#) Mouse

[Entrez Gene: 315218](#) Rat

[SwissProt: Q9BU23](#) Human

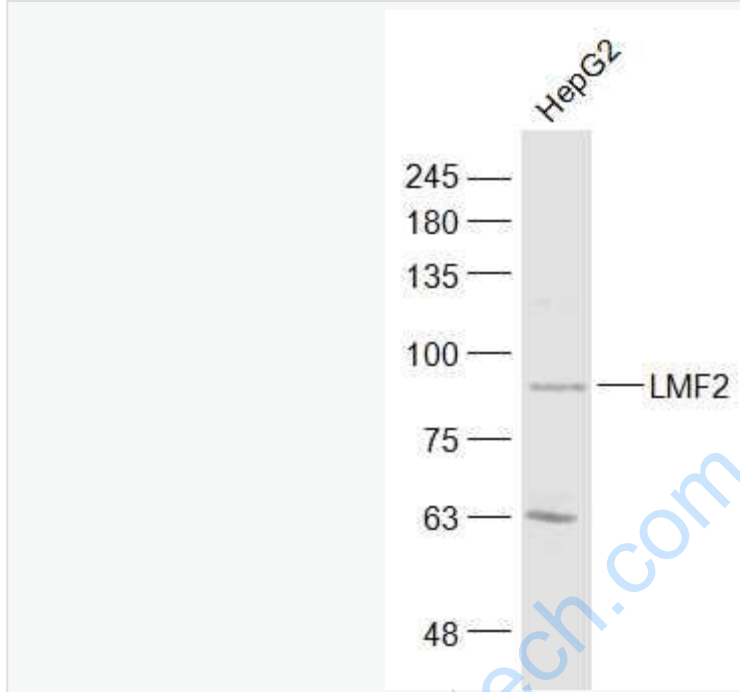
[SwissProt: Q8C3X8](#) Mouse

[SwissProt: A1L1J9](#) Rat

Important Note:

This product as supplied is intended for research use only, not for use in human, therapeutic or diagnostic applications.

Picture:



Sample:

HepG2(Human) Cell Lysate at 30 ug

Primary: Anti-LMF2 (SL18312R) at 1/300 dilution

Secondary: IRDye800CW Goat Anti-Rabbit IgG at 1/20000 dilution

Predicted band size: 80 kD

Observed band size: 80 kD