



Rabbit Anti-LMTK3 antibody

SL18317R

Product Name:	LMTK3
Chinese Name:	丝氨酸/苏氨酸蛋白激酶LMTK3抗体
Alias:	BC059845; KIAA1883; Lemur tyrosine kinase 3; LMR3; MGC90743; Serine/threonine-protein kinase LMTK3; TYKLM3.
Organism Species:	Rabbit
Clonality:	Polyclonal
React Species:	Human,Mouse,Pig,Cow,Sheep,Guinea Pig,Cat,
Applications:	WB=1:500-2000ELISA=1:500-1000IHC-P=1:400-800IHC-F=1:400-800ICC=1:100-500IF=1:100-500 (Paraffin sections need antigen repair) not yet tested in other applications. optimal dilutions/concentrations should be determined by the end user.
Molecular weight:	151kDa
Cellular localization:	The cell membrane
Form:	Lyophilized or Liquid
Concentration:	1mg/ml
immunogen:	KLH conjugated synthetic peptide derived from human LMTK3:1301-1400/1460
Lsotype:	IgG
Purification:	affinity purified by Protein A
Storage Buffer:	0.01M TBS(pH7.4) with 1% BSA, 0.03% Proclin300 and 50% Glycerol.
Storage:	Store at -20 °C for one year. Avoid repeated freeze/thaw cycles. The lyophilized antibody is stable at room temperature for at least one month and for greater than a year when kept at -20°C. When reconstituted in sterile pH 7.4 0.01M PBS or diluent of antibody the antibody is stable for at least two weeks at 2-4 °C.
PubMed:	PubMed
Product Detail:	The phosphorylation of proteins by protein kinases and protein phosphatases is a key event in most nuclear and cytoplasmic processes. The ability to activate and deactivate proteins via phosphorylation or dephosphorylation is important for cell division, cell differentiation, DNA repair and transcription. LMTK3 (lemur tyrosine kinase 3), also known as LMR3 or TYKLM3, is a 1,460 amino acid protein that contains one protein kinase domain. One of several members of the protein kinase superfamily, LMTK3 is

expressed at low levels in brain and testis where it catalyzes the ATP-dependent phosphorylation of target proteins, thereby modifying their function.

Subcellular Location:

Cell Membrane

Similarity:

Belongs to the protein kinase superfamily.

Tyr protein kinase family.

Contains 1 protein kinase domain.

SWISS:

Q96Q04

Gene ID:

114783

Database links:

[Entrez Gene: 114783](#) Human

[Entrez Gene: 381983](#) Mouse

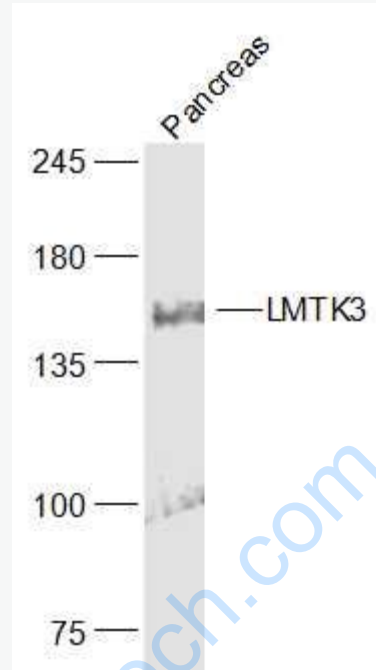
[SwissProt: Q96Q04](#) Human

[SwissProt: Q5XJV6](#) Mouse

Important Note:

This product as supplied is intended for research use only, not for use in human, therapeutic or diagnostic applications.

Picture:



Sample:

Pancreas (Mouse) Lysate at 40 ug

Primary: Anti-1LMTK3 (SL18317R) at 1/300 dilution

Secondary: IRDye800CW Goat Anti-Rabbit IgG at 1/20000 dilution

Predicted band size: 151 kD

Observed band size: 151 kD