



## Rabbit Anti-C20orf201 antibody

SL18325R

<b>Product Name:</b>	C20orf201
<b>Chinese Name:</b>	20号染色体开放阅读框201抗体
<b>Alias:</b>	LOC198437; C20orf201; LKAM1_HUMAN; Uncharacterized protein C20orf201; LKAAEAR1; Protein LKAAEAR1; LKAAEAR motif-containing protein 1; BA299N6.3.
<b>Organism Species:</b>	Rabbit
<b>Clonality:</b>	Polyclonal
<b>React Species:</b>	Human,Dog,
<b>Applications:</b>	ELISA=1:500-1000IHC-P=1:400-800IHC-F=1:400-800ICC=1:100-500IF=1:100-500 (Paraffin sections need antigen repair) not yet tested in other applications. optimal dilutions/concentrations should be determined by the end user.
<b>Molecular weight:</b>	22kDa
<b>Cellular localization:</b>	The nucleuscytoplasmicExtracellular matrix
<b>Form:</b>	Lyophilized or Liquid
<b>Concentration:</b>	1mg/ml
<b>immunogen:</b>	KLH conjugated synthetic peptide derived from human C20orf201:1-100/194
<b>Lsotype:</b>	IgG
<b>Purification:</b>	affinity purified by Protein A
<b>Storage Buffer:</b>	0.01M TBS(pH7.4) with 1% BSA, 0.03% Proclin300 and 50% Glycerol.
<b>Storage:</b>	Store at -20 °C for one year. Avoid repeated freeze/thaw cycles. The lyophilized antibody is stable at room temperature for at least one month and for greater than a year when kept at -20°C. When reconstituted in sterile pH 7.4 0.01M PBS or diluent of antibody the antibody is stable for at least two weeks at 2-4 °C.
<b>PubMed:</b>	<a href="#">PubMed</a>
<b>Product Detail:</b>	LKAAEAR1 (LKAAEAR Motif Containing 1) is a Protein Coding gene.  SWISS: Q8TD35

**Gene ID:**  
198437

**Database links:**

[Entrez Gene: 198437](#) Human

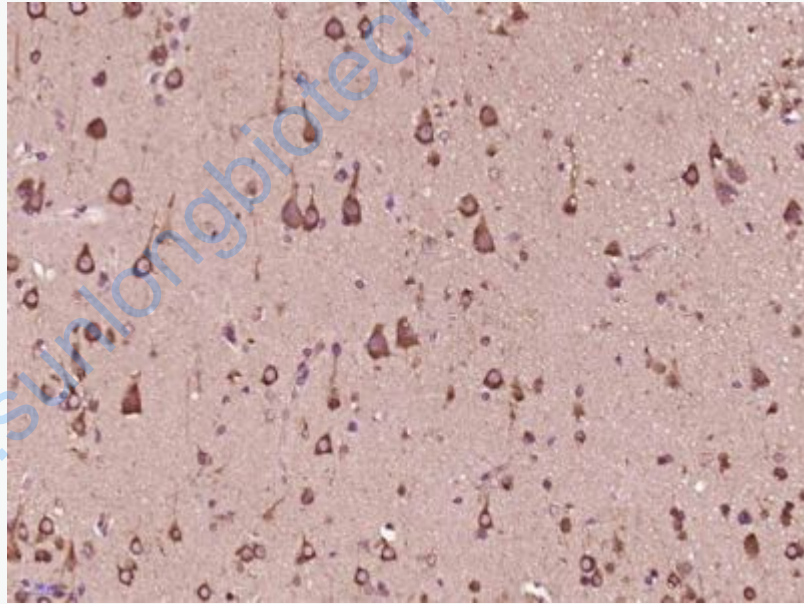
[SwissProt: Q8TD35](#) Human

[Unigene: 570316](#) Human

**Important Note:**

This product as supplied is intended for research use only, not for use in human, therapeutic or diagnostic applications.

**Picture:**



Paraformaldehyde-fixed, paraffin embedded (Human brain glioma); Antigen retrieval by boiling in sodium citrate buffer (pH6.0) for 15min; Block endogenous peroxidase by 3% hydrogen peroxide for 20 minutes; Blocking buffer (normal goat serum) at 37°C for 30min; Antibody incubation with (C20orf201) Polyclonal Antibody, Unconjugated (SL18325R) at 1:400 overnight at 4°C, followed by

	operating according to SP Kit(Rabbit) (sp-0023) instructions and DAB staining.
--	--

[www.sunlongbiotech.com](http://www.sunlongbiotech.com)