

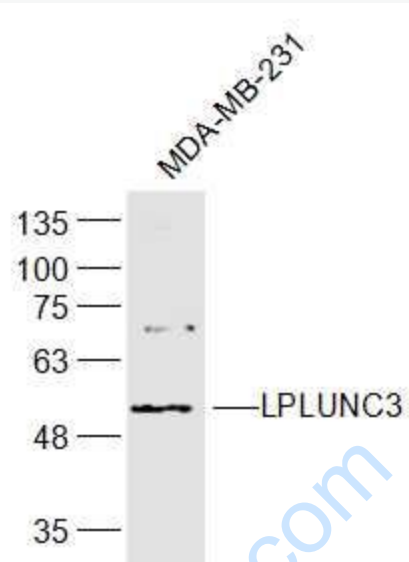


Rabbit Anti-LPLUNC3 antibody

SL18351R

Product Name:	LPLUNC3
Chinese Name:	鼻咽癌相关蛋白抗体
Alias:	BPIB3_HUMAN; BPI fold-containing family B member 3; Ligand-binding protein RYA3; Long palate, lung and nasal epithelium carcinoma-associated protein 3; BPIFB3; C20orf185; LPLUNC3; BPI fold-containing family B member 3 precursor; RYA3.
Organism Species:	Rabbit
Clonality:	Polyclonal
React Species:	Human,Mouse,Rat,
Applications:	WB=1:500-2000ELISA=1:500-1000IHC-P=1:400-800IHC-F=1:400-800ICC=1:100-500IF=1:100-500 (Paraffin sections need antigen repair) not yet tested in other applications. optimal dilutions/concentrations should be determined by the end user.
Molecular weight:	48kDa
Cellular localization:	Secretory protein
Form:	Lyophilized or Liquid
Concentration:	1mg/ml
immunogen:	KLH conjugated synthetic peptide derived from human LPLUNC3:21-120/476
Lsotype:	IgG
Purification:	affinity purified by Protein A
Storage Buffer:	0.01M TBS(pH7.4) with 1% BSA, 0.03% Proclin300 and 50% Glycerol.
Storage:	Store at -20 °C for one year. Avoid repeated freeze/thaw cycles. The lyophilized antibody is stable at room temperature for at least one month and for greater than a year when kept at -20°C. When reconstituted in sterile pH 7.4 0.01M PBS or diluent of antibody the antibody is stable for at least two weeks at 2-4 °C.
PubMed:	PubMed
Product Detail:	

Picture:



Sample:

MDA-MB-231(Human) Cell Lysate at 30 ug

Primary: Anti-LPLUNC3 (SL18351R) at 1/300 dilution

Secondary: IRDye800CW Goat Anti-Rabbit IgG at 1/20000 dilution

Predicted band size: 48 kD

Observed band size: 53 kD