



Rabbit Anti-LRBA antibody

SL18355R

Product Name:	LRBA
Chinese Name:	LRBA蛋白抗体
Alias:	Beige-like protein; BGL; C80285; CDC4-like protein; CDC4L; D3ErtD775e; Lab300; LBA; Lipopolysaccharide-responsive and beige-like anchor protein; LPS-responsive vesicle trafficking beach and anchor containing; Lrba; LRBA_HUMAN; vesicle trafficking beach and anchor containing.
Organism Species:	Rabbit
Clonality:	Polyclonal
React Species:	Human,Mouse,Dog,Cow,Horse,Sheep,
Applications:	WB=1:500-2000ELISA=1:500-1000IHC-P=1:400-800IHC-F=1:400-800ICC=1:100-500IF=1:100-500 (Paraffin sections need antigen repair) not yet tested in other applications. optimal dilutions/concentrations should be determined by the end user.
Molecular weight:	319kDa
Cellular localization:	The cell membrane
Form:	Lyophilized or Liquid
Concentration:	1mg/ml
immunogen:	KLH conjugated synthetic peptide derived from human LRBA:2001-2143/2143
Lsotype:	IgG
Purification:	affinity purified by Protein A
Storage Buffer:	0.01M TBS(pH7.4) with 1% BSA, 0.03% Proclin300 and 50% Glycerol.
Storage:	Store at -20 °C for one year. Avoid repeated freeze/thaw cycles. The lyophilized antibody is stable at room temperature for at least one month and for greater than a year when kept at -20°C. When reconstituted in sterile pH 7.4 0.01M PBS or diluent of antibody the antibody is stable for at least two weeks at 2-4 °C.
PubMed:	PubMed
Product Detail:	The protein encoded by this gene is a member of the WDL-BEACH-WD (WBW) gene family. Its expression is induced in B cells and macrophages by bacterial lipopolysaccharides (LPS). The encoded protein associates with protein kinase A and may be involved in leading intracellular vesicles to activated receptor complexes, which

aids in the secretion and/or membrane deposition of immune effector molecules. Defects in this gene are associated with the disorder common variable immunodeficiency-8 with autoimmunity. Two transcript variants encoding different isoforms have been found for this gene. [provided by RefSeq, Dec 2012]

Function:

May be involved in coupling signal transduction and vesicle trafficking to enable polarized secretion and/or membrane deposition of immune effector molecules.

Subcellular Location:

Cell membrane. Endoplasmic reticulum. Golgi apparatus > trans-Golgi network. Lysosome.

Tissue Specificity:

Ubiquitous.

Post-translational modifications:

Phosphorylated upon DNA damage, probably by ATM or ATR.

Similarity:

Contains 1 BEACH domain.

Contains 6 WD repeats.

SWISS:

P50851

Gene ID:

987

Database links:

[Entrez Gene: 987](#) Human

[Omim: 606453](#) Human

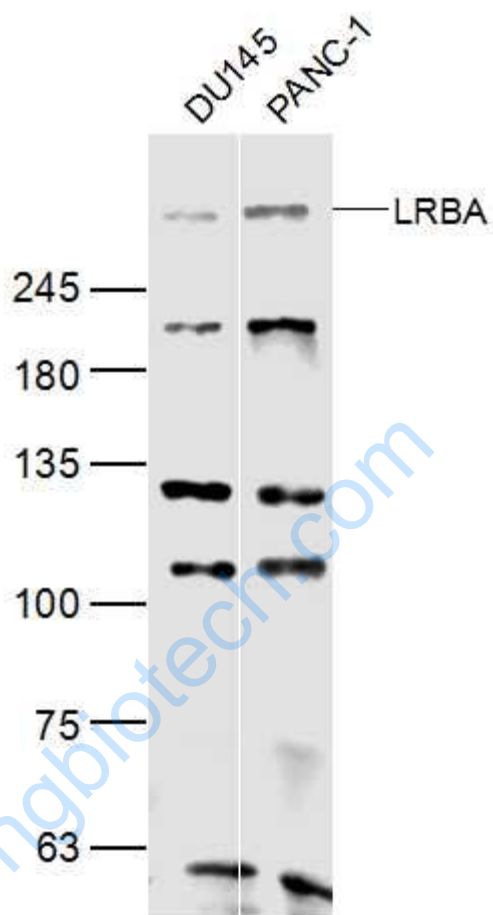
[SwissProt: P50851](#) Human

[Unigene: 480938](#) Human

Important Note:

This product as supplied is intended for research use only, not for use in human, therapeutic or diagnostic applications.

Picture:



Sample:

DU145(Human) Cell Lysate at 40 ug

PANC-1(Human) Cell Lysate at 40 ug

Primary: Anti-LRBA (SL18355R) at 1/300 dilution

Secondary: IRDye800CW Goat Anti-Rabbit IgG at 1/20000 dilution

Predicted band size: 319 kD

Observed band size: 319 kD