



Rabbit Anti-LRP11 antibody

SL18361R

Product Name:	LRP11
Chinese Name:	低密度Lipoprotein受体相关蛋白11抗体
Alias:	bA350J20.3; Low density lipoprotein receptor related protein 11; LRP 11; MANSC3.
Organism Species:	Rabbit
Clonality:	Polyclonal
React Species:	Human,
Applications:	WB=1:500-2000ELISA=1:500-1000 not yet tested in other applications. optimal dilutions/concentrations should be determined by the end user.
Molecular weight:	49kDa
Cellular localization:	The cell membrane
Form:	Lyophilized or Liquid
Concentration:	1mg/ml
immunogen:	KLH conjugated synthetic peptide derived from human LRP11:341-440/500<Extracellular>
Lsotype:	IgG
Purification:	affinity purified by Protein A
Storage Buffer:	0.01M TBS(pH7.4) with 1% BSA, 0.03% Proclin300 and 50% Glycerol.
Storage:	Store at -20 °C for one year. Avoid repeated freeze/thaw cycles. The lyophilized antibody is stable at room temperature for at least one month and for greater than a year when kept at -20°C. When reconstituted in sterile pH 7.4 0.01M PBS or diluent of antibody the antibody is stable for at least two weeks at 2-4 °C.
PubMed:	PubMed
Product Detail:	LRP11 is a 500 amino acid single-pass type I membrane protein that exists as two alternatively spliced isoforms. LRP11 is encoded by a gene located on human chromosome 6q25.1. Chromosome 6 contains 170 million base pairs and comprises nearly 6% of the human genome. Deletion of a portion of the q arm of chromosome 6 is associated with early onset intestinal cancer, suggesting the presence of a cancer susceptibility locus. Additionally, Porphyria cutanea tarda, Parkinson's disease, Stickler syndrome and a susceptibility to bipolar disorder are all associated with genes that map

to chromosome 6.

Function:

LRP11 belongs to the LDLR family. It contains one LDL-receptor class A domain, one MANEC domain and one PKD domain. There are two named isoforms.

Subcellular Location:

Membrane; Single pass type I membrane protein

Similarity:

Belongs to the LDLR family.

Contains 1 LDL-receptor class A domain.

Contains 1 MANSC domain.

Contains 1 PKD domain.

SWISS:

Q86VZ4

Gene ID:

84918

Database links:

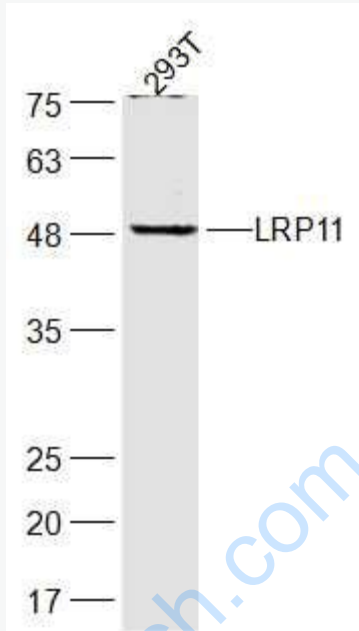
[Entrez Gene: 84918](#) Human

[SwissProt: Q86VZ4](#) Human

Important Note:

This product as supplied is intended for research use only, not for use in human, therapeutic or diagnostic applications.

Picture:



Sample:

293T(Human) Cell Lysate at 30 ug

Primary: Anti-LRP11 (SL18361R) at 1/300 dilution

Secondary: IRDye800CW Goat Anti-Rabbit IgG at 1/20000 dilution

Predicted band size: 49 kD

Observed band size: 49 kD