



Rabbit Anti-phospho-LYRIC (Ser568) antibody

SL18581R

Product Name:	phospho-LYRIC (Ser568)
Chinese Name:	磷酸化星形胶质细胞升高基因1抗体
Alias:	LYRIC (phospho S568); p-LYRIC (phospho S568); 3D3; 3D3/LYRIC; AEG 1; AEG-1; AEG1; Astrocyte elevated gene 1; Astrocyte elevated gene-1 protein; LYRIC; LYRIC/3D3; LYRIC_HUMAN; Lysine rich CEACAM1 associated protein; Lysine rich CEACAM1 co isolated protein; Lysine-rich CEACAM1 co-isolated protein; Metadherin; Metastasis adhesion protein; MTDH; Protein LYRIC.
Organism Species:	Rabbit
Clonality:	Polyclonal
React Species:	Human,Mouse,Rat,Pig,Cow,Horse,
Applications:	WB=1:500-2000ELISA=1:500-1000IHC-P=1:400-800IHC-F=1:400-800ICC=1:100-500IF=1:100-500 (Paraffin sections need antigen repair) not yet tested in other applications. optimal dilutions/concentrations should be determined by the end user.
Molecular weight:	64kDa
Cellular localization:	The nucleuscytoplasmicThe cell membrane
Form:	Lyophilized or Liquid
Concentration:	1mg/ml
immunogen:	KLH conjugated synthesised phosphopeptide derived from human LYRIC around the phosphorylation site of Ser568:WE(p-S)PK
Lsotype:	IgG
Purification:	affinity purified by Protein A
Storage Buffer:	0.01M TBS(pH7.4) with 1% BSA, 0.03% Proclin300 and 50% Glycerol.
Storage:	Store at -20 °C for one year. Avoid repeated freeze/thaw cycles. The lyophilized antibody is stable at room temperature for at least one month and for greater than a year when kept at -20°C. When reconstituted in sterile pH 7.4 0.01M PBS or diluent of antibody the antibody is stable for at least two weeks at 2-4 °C.
PubMed:	PubMed
Product Detail:	LYRIC is a type II membrane protein, the precise role of which has yet to be defined. It

is expressed in breast and prostate carcinoma and is a potential mediator of lung metastasis. It has also been found in mouse Purkinje neurons and cerebellum. In epithelial cells it is recruited to tight junctions (TJ) during the maturation of the TJ complexes. LYRIC co-localizes with beta-catenin in normal and tumour tissues.

Function:

Downregulates SLC1A2/EAAT2 promoter activity when expressed ectopically. Activates the nuclear factor kappa-B (NF-kappa-B) transcription factor. Promotes anchorage-independent growth of immortalized melanocytes and astrocytes which is a key component in tumor cell expansion. Promotes lung metastasis and also has an effect on bone and brain metastasis, possibly by enhancing the seeding of tumor cells to the target organ endothelium. Induces chemoresistance.

Subunit:

Interacts with BCCIP, CREBBP/CBP and RELA/p65.

Subcellular Location:

Widely expressed with highest levels in muscle-dominating organs such as skeletal muscle, heart, tongue and small intestine and in endocrine glands such as thyroid and adrenal gland. Overexpressed in various cancers including breast, brain, prostate, melanoma and glioblastoma multiforme.

SWISS:

Q86UE4

Gene ID:

92140

Database links:

[Entrez Gene: 92140](#) Human

[Entrez Gene: 509788](#) Cow

[Entrez Gene: 67154](#) Mouse

[Entrez Gene: 170910](#) Rat

[Omim: 610323](#) Human

[SwissProt: Q86UE4](#) Human

[SwissProt: Q80WJ7](#) Mouse

[SwissProt: Q9Z1W6](#) Rat

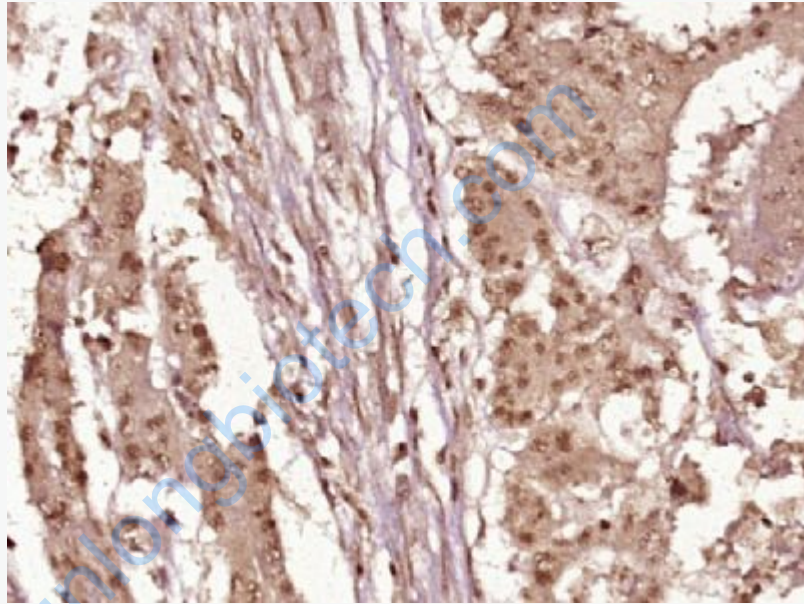
[Unigene: 377155](#) Human

[Unigene: 130883](#) Mouse

[Unigene: 6864](#) Rat

Important Note:

This product as supplied is intended for research use only, not for use in human, therapeutic or diagnostic applications.



Picture:

Paraformaldehyde-fixed, paraffin embedded (Human stomach cancer); Antigen retrieval by boiling in sodium citrate buffer (pH6.0) for 15min; Block endogenous peroxidase by 3% hydrogen peroxide for 20 minutes; Blocking buffer (normal goat serum) at 37°C for 30min; Antibody incubation with (phospho-LYRIC (Ser568)) Polyclonal Antibody, Unconjugated (SL18581R) at 1:400 overnight at 4°C, followed by operating according to SP Kit(Rabbit) (sp-0023) instructions and DAB staining.