



Rabbit Anti-LYRM7 antibody

SL18586R

| | |
|-------------------------------|--|
| Product Name: | LYRM7 |
| Chinese Name: | LYRM7蛋白抗体 |
| Alias: | C5orf31; FLJ20796; LYR motif containing 7; LYR motif containing protein 7; Lym7 homolog. |
| Organism Species: | Rabbit |
| Clonality: | Polyclonal |
| React Species: | Human,Mouse,Rat,Dog,Pig,Cow,Horse,Rabbit,Sheep, |
| Applications: | WB=1:500-2000ELISA=1:500-1000IHC-P=1:400-800IHC-F=1:400-800ICC=1:100-500IF=1:100-500 (Paraffin sections need antigen repair) not yet tested in other applications. optimal dilutions/concentrations should be determined by the end user. |
| Molecular weight: | 12kDa |
| Cellular localization: | cytoplasmic |
| Form: | Lyophilized or Liquid |
| Concentration: | 1mg/ml |
| immunogen: | KLH conjugated synthetic peptide derived from human LYRM7:1-80/106 |
| Lsotype: | IgG |
| Purification: | affinity purified by Protein A |
| Storage Buffer: | 0.01M TBS(pH7.4) with 1% BSA, 0.03% Proclin300 and 50% Glycerol. |
| Storage: | Store at -20 °C for one year. Avoid repeated freeze/thaw cycles. The lyophilized antibody is stable at room temperature for at least one month and for greater than a year when kept at -20°C. When reconstituted in sterile pH 7.4 0.01M PBS or diluent of antibody the antibody is stable for at least two weeks at 2-4 °C. |
| PubMed: | PubMed |
| Product Detail: | Inner mitochondrial membrane complex III (CIII) is the main enzyme complex in the mitochondrial respiratory chain, and Rieske Fe-S protein (UQCRFS1) is the last catalytic subunit added to the complex. The protein encoded by this gene is a nuclear-encoded mitochondrial matrix protein that stabilizes UQCRFS1 and chaperones it to the CIII complex. Defects in this gene are a cause of mitochondrial complex III deficiency, nuclear type 8. Three transcript variants encoding two different isoforms have been |

found for this gene. [provided by RefSeq, Jun 2014]

Function:

Assembly factor required for Rieske Fe-S protein UQCRFS1 incorporation into the cytochrome b-c1 (CIII) complex. Functions as a chaperone, binding to this subunit within the mitochondrial matrix and stabilizing it prior to its translocation and insertion into the late CIII dimeric intermediate within the mitochondrial inner membrane.

Subcellular Location:

Mitochondrial

Similarity:

Belongs to the complex I LYR family.

SWISS:

Q5U5X0

Gene ID:

90624

Database links:

[Entrez Gene: 90624](#) Human

[Entrez Gene: 75530](#) Mouse

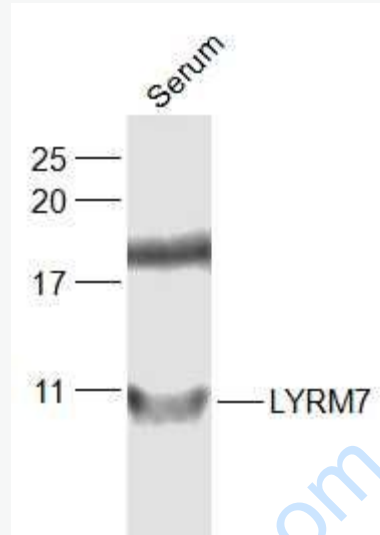
[SwissProt: Q5U5X0](#) Human

[SwissProt: Q9DA03](#) Mouse

Important Note:

This product as supplied is intended for research use only, not for use in human, therapeutic or diagnostic applications.

Picture:



Sample:

Serum(Human) at 30 ug

Primary: Anti-LYRM7 (SL18586R) at 1/1000 dilution

Secondary: IRDye800CW Goat Anti-Rabbit IgG at 1/20000 dilution

Predicted band size: 12 kD

Observed band size: 10 kD