



Rabbit Anti-MAP1D antibody

SL18659R

Product Name:	MAP1D
Chinese Name:	蛋氨酸氨肽酶1D抗体
Alias:	AMP1D_HUMAN; CDS of metAP 3 within PCR fragment; Methionine aminopeptidase 1D, mitochondrial precursor; MAP 1D; MAP1D; MetAP 1D; Metap11; Methionine aminopeptidase 1D; Methionine aminopeptidase 1D, mitochondrial; Methionyl aminopeptidase type 1D (mitochondrial); Methionyl aminopeptidase type 1D, mitochondrial; mitochondrial; Peptidase M 1D.
Organism Species:	Rabbit
Clonality:	Polyclonal
React Species:	Human, Mouse, Dog, Cow, Horse, Rabbit, Sheep,
Applications:	WB=1:500-2000ELISA=1:500-1000IHC-P=1:400-800IHC-F=1:400-800ICC=1:100-500IF=1:100-500 (Paraffin sections need antigen repair) not yet tested in other applications. optimal dilutions/concentrations should be determined by the end user.
Molecular weight:	35kDa
Cellular localization:	cytoplasmic
Form:	Lyophilized or Liquid
Concentration:	1mg/ml
immunogen:	KLH conjugated synthetic peptide derived from human MAP1D:251-335/335
Lsotype:	IgG
Purification:	affinity purified by Protein A
Storage Buffer:	0.01M TBS(pH7.4) with 1% BSA, 0.03% Proclin300 and 50% Glycerol.
Storage:	Store at -20 °C for one year. Avoid repeated freeze/thaw cycles. The lyophilized antibody is stable at room temperature for at least one month and for greater than a year when kept at -20°C. When reconstituted in sterile pH 7.4 0.01M PBS or diluent of antibody the antibody is stable for at least two weeks at 2-4 °C.
PubMed:	PubMed
Product Detail:	The N-terminal methionine excision pathway is an essential process in which the N-terminal methionine is removed from many proteins, thus facilitating subsequent protein modification. In mitochondria, enzymes that catalyze this reaction are called methionine

aminopeptidases (MetAps, or MAPs; EC 3.4.11.18) (Serero et al., 2003 [PubMed 14532271]).[supplied by OMIM, Mar 2008]

Function:

Removes the amino-terminal methionine from nascent proteins (By similarity). May play a role in colon tumorigenesis.

Subcellular Location:

Mitochondrion.

Tissue Specificity:

Overexpressed in colon cancer cell lines and colon tumors as compared to normal tissues (at protein level).

Similarity:

Belongs to the peptidase M24A family.

SWISS:

Q6UB28

Gene ID:

254042

Database links:

[Entrez Gene: 254042](#) Human

[Entrez Gene: 66559](#) Mouse

[Entrez Gene: 311748](#) Rat

[Omid: 610267](#) Human

[SwissProt: Q6UB28](#) Human

[SwissProt: Q9CPW9](#) Mouse

[Unigene: 298250](#) Human

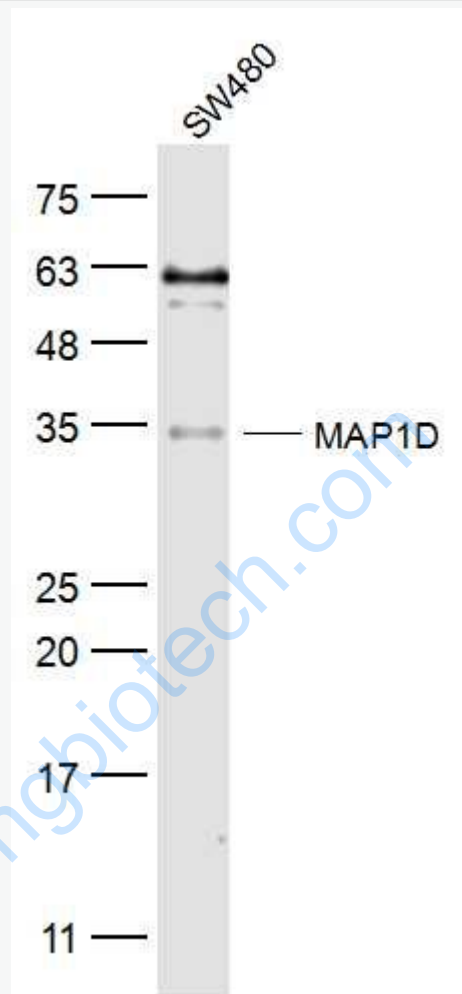
[Unigene: 152796](#) Mouse

[Unigene: 24026](#) Rat

Important Note:

This product as supplied is intended for research use only, not for use in human, therapeutic or diagnostic applications.

Picture:



Sample:

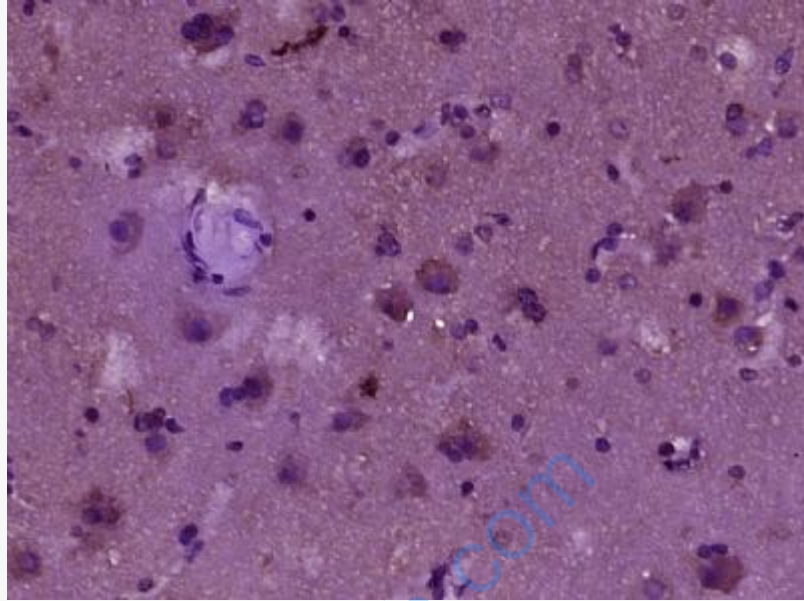
SW480(Human) Cell Lysate at 30 ug

Primary: Anti-MAP1D (SL18659R) at 1/300 dilution

Secondary: IRDye800CW Goat Anti-Rabbit IgG at 1/20000 dilution

Predicted band size: 35 kD

Observed band size: 35 kD



Paraformaldehyde-fixed, paraffin embedded (human brain glioma); Antigen retrieval by boiling in sodium citrate buffer (pH6.0) for 15min; Block endogenous peroxidase by 3% hydrogen peroxide for 20 minutes; Blocking buffer (normal goat serum) at 37°C for 30min; Antibody incubation with (MAP1D) Polyclonal Antibody, Unconjugated (SL18659R) at 1:400 overnight at 4°C, followed by operating according to SP Kit(Rabbit) (sp-0023) instructions and DAB staining.