



## Rabbit Anti-MAP3K6/ASK2 antibody

SL18665R

<b>Product Name:</b>	MAP3K6/ASK2
<b>Chinese Name:</b>	Apoptosis信号调节激酶2抗体
<b>Alias:</b>	apoptosis signal regulating kinase 2; Apoptosis signal-regulating kinase 2; ASK2; EC 2.7.11.25; M3K6_HUMAN; MAP3K6; MAPKKK6; MEKK6; MGC125653; MGC20114; Mitogen-activated protein kinase kinase kinase 6.
<b>Organism Species:</b>	Rabbit
<b>Clonality:</b>	Polyclonal
<b>React Species:</b>	Human,Mouse,Rat,Dog,Horse,
<b>Applications:</b>	ELISA=1:500-1000IHC-P=1:400-800IHC-F=1:400-800ICC=1:100-500IF=1:100-500 (Paraffin sections need antigen repair) not yet tested in other applications. optimal dilutions/concentrations should be determined by the end user.
<b>Molecular weight:</b>	143kDa
<b>Cellular localization:</b>	cytoplasmicThe cell membrane
<b>Form:</b>	Lyophilized or Liquid
<b>Concentration:</b>	1mg/ml
<b>immunogen:</b>	KLH conjugated synthetic peptide derived from human MAP3K6/ASK2:101-200/1288
<b>Lsotype:</b>	IgG
<b>Purification:</b>	affinity purified by Protein A
<b>Storage Buffer:</b>	0.01M TBS(pH7.4) with 1% BSA, 0.03% Proclin300 and 50% Glycerol.
<b>Storage:</b>	Store at -20 °C for one year. Avoid repeated freeze/thaw cycles. The lyophilized antibody is stable at room temperature for at least one month and for greater than a year when kept at -20°C. When reconstituted in sterile pH 7.4 0.01M PBS or diluent of antibody the antibody is stable for at least two weeks at 2-4 °C.
<b>PubMed:</b>	<a href="#">PubMed</a>
<b>Product Detail:</b>	This gene encodes a serine/threonine protein kinase that forms a component of protein kinase-mediated signal transduction cascades. The encoded kinase participates in the regulation of vascular endothelial growth factor (VEGF) expression. Alternative splicing results in multiple transcript variants. [provided by RefSeq, Jul 2014]

**Function:**

Component of a protein kinase signal transduction cascade. Activates the JNK, but not ERK or p38 kinase pathways.

**Similarity:**

Belongs to the protein kinase superfamily.  
STE Ser/Thr protein kinase family.  
MAP kinase kinase kinase subfamily.  
Contains 1 protein kinase domain.

**SWISS:**

O95382

**Gene ID:**

9064

**Database links:**

[Entrez Gene: 9064](#) Human

[Entrez Gene: 53608](#) Mouse

[Entrez Gene: 53608](#) Rat

[Omim: 604468](#) Human

[SwissProt: O95382](#) Human

[SwissProt: Q9WTR2](#) Mouse

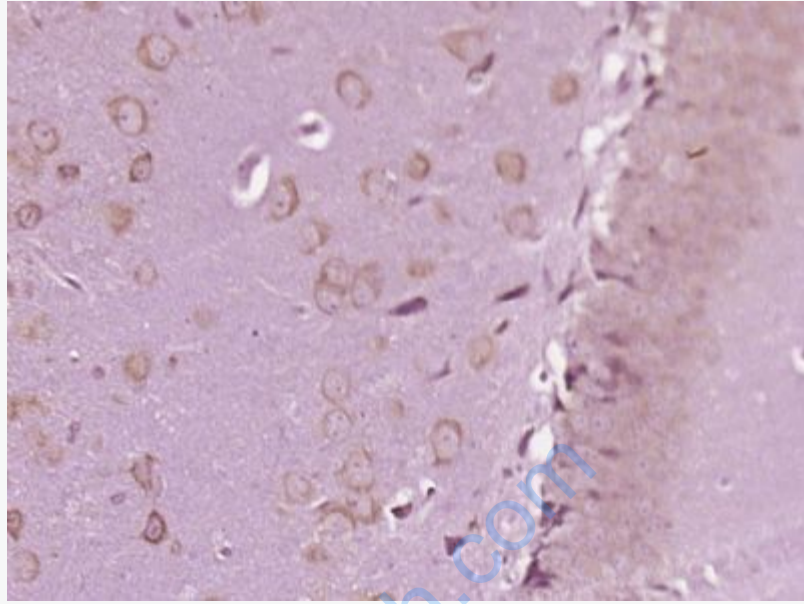
[SwissProt: D3ZFL3](#) Rat

[Unigene: 194694](#) Human

[Unigene: 36640](#) Mouse

**Important Note:**

This product as supplied is intended for research use only, not for use in human, therapeutic or diagnostic applications.



**Picture:**

Paraformaldehyde-fixed, paraffin embedded (Mouse brain); Antigen retrieval by boiling in sodium citrate buffer (pH6.0) for 15min; Block endogenous peroxidase by 3% hydrogen peroxide for 20 minutes; Blocking buffer (normal goat serum) at 37°C for 30min; Antibody incubation with (MAP3K6) Polyclonal Antibody, Unconjugated (SL18665R) at 1:400 overnight at 4°C, followed by operating according to SP Kit(Rabbit) (sp-0023) instructions and DAB staining.