



Rabbit Anti-MAPRE1 antibody

SL18675R

Product Name:	MAPRE1
Chinese Name:	微管关联蛋白RP/EB家族成员1抗体
Alias:	5530600P05Rik; Adenomatous polyposis coli binding protein EB 1; Adenomatous polyposis coli binding protein EB1; AI462499; AI504412; APC binding protein EB 1; APC binding protein EB1; APC-binding protein EB1; AW260097; BIM1p; D2Ertd459e; EB 1; EB1; End binding protein 1; End-binding protein 1; fa01e12; fc23e11; fi33c06; MAPRE 1; MAPRE1; Mapre3; MARE1_HUMAN; MGC117374; MGC129946; MGC52508; Microtubule associated protein RP/EB family member 1; Microtubule-associated protein RP/EB family member 1; wu:fa01e12; wu:fc23e11; wu:fi33c06; zgc:55428; zgc:77807; zgc:85755.
Organism Species:	Rabbit
Clonality:	Polyclonal
React Species:	Human,Mouse,Rat,Chicken,Dog,Cow,
Applications:	ELISA=1:500-1000IHC-P=1:400-800IHC-F=1:400-800ICC=1:100-500IF=1:100-500 (Paraffin sections need antigen repair) not yet tested in other applications. optimal dilutions/concentrations should be determined by the end user.
Molecular weight:	36kDa
Cellular localization:	cytoplasmic
Form:	Lyophilized or Liquid
Concentration:	1mg/ml
immunogen:	KLH conjugated synthetic peptide derived from human MAPRE1:2-100/268
Lsotype:	IgG
Purification:	affinity purified by Protein A
Storage Buffer:	0.01M TBS(pH7.4) with 1% BSA, 0.03% Proclin300 and 50% Glycerol.
Storage:	Store at -20 °C for one year. Avoid repeated freeze/thaw cycles. The lyophilized antibody is stable at room temperature for at least one month and for greater than a year when kept at -20°C. When reconstituted in sterile pH 7.4 0.01M PBS or diluent of antibody the antibody is stable for at least two weeks at 2-4 °C.
PubMed:	PubMed

The protein encoded by this gene was first identified by its binding to the APC protein which is often mutated in familial and sporadic forms of colorectal cancer. This protein localizes to microtubules, especially the growing ends, in interphase cells. During mitosis, the protein is associated with the centrosomes and spindle microtubules. The protein also associates with components of the dynactin complex and the intermediate chain of cytoplasmic dynein. Because of these associations, it is thought that this protein is involved in the regulation of microtubule structures and chromosome stability. This gene is a member of the RP/EB family. [provided by RefSeq, Jul 2008]

Function:

May be involved in microtubule polymerization, and spindle function by stabilizing microtubules and anchoring them at centrosomes. May play a role in cell migration.

Subcellular Location:

Cytoplasm > cytoskeleton. Cytoplasm > cytoskeleton > centrosome. Associated with the microtubule network at the growing distal tip of microtubules. Also enriched at the centrosome.

Tissue Specificity:

Ubiquitously expressed.

Similarity:

Belongs to the MAPRE family.
Contains 1 CH (calponin-homology) domain.
Contains 1 EB1 C-terminal domain.

SWISS:

Q15691

Gene ID:

22919

Database links:

[Entrez Gene: 22919](#) Human

[Entrez Gene: 419288](#) Chicken

[Entrez Gene: 13589](#) Mouse

[Entrez Gene: 100173206](#) Orangutan

[Entrez Gene: 114764](#) Rat

[Omim: 603108](#) Human

Product Detail:

[SwissProt: Q5ZLC7](#) Chicken

[SwissProt: Q15691](#) Human

[SwissProt: Q61166](#) Mouse

[SwissProt: Q5R7Z5](#) Orangutan

[SwissProt: Q6V291](#) Quail

[SwissProt: Q66HR2](#) Rat

[Unigene: 472437](#) Human

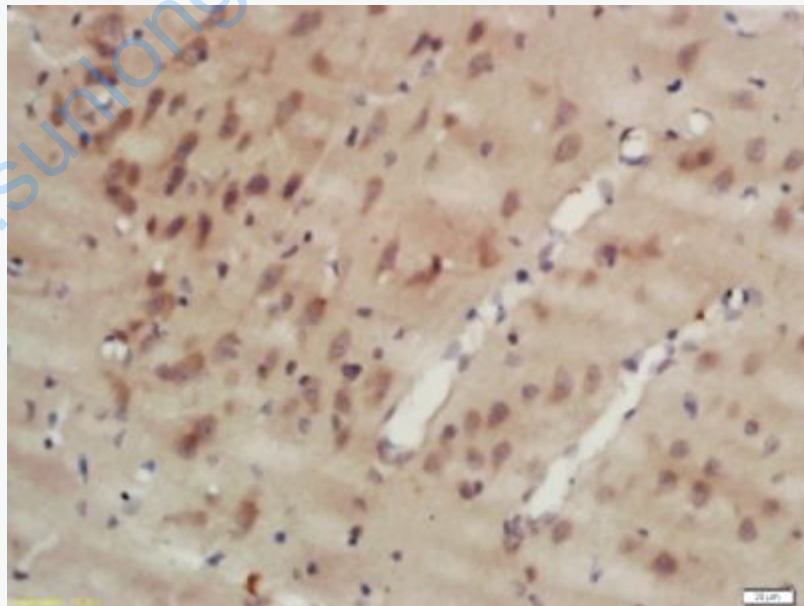
[Unigene: 143877](#) Mouse

[Unigene: 7652](#) Rat

Important Note:

This product as supplied is intended for research use only, not for use in human, therapeutic or diagnostic applications.

Picture:



Tissue/cell: rat brain tissue; 4% Paraformaldehyde-fixed and paraffin-embedded;
Antigen retrieval: citrate buffer (0.01M, pH 6.0), Boiling bathing for 15min; Block
endogenous peroxidase by 3% Hydrogen peroxide for 30min; Blocking buffer

(normal goat serum,C-0005) at 37°C for 20 min;

Incubation: Anti-MAPRE1 Polyclonal Antibody, Unconjugated(SL18675R) 1:200,
overnight at 4°C, followed by conjugation to the secondary antibody(SP-0023) and
DAB(C-0010) staining

www.sunlongbiotech.com