



## Rabbit Anti-Marapsin1/CAPH2 antibody

SL18676R

<b>Product Name:</b>	Marapsin1/CAPH2
<b>Chinese Name:</b>	通道活化蛋白酶2抗体
<b>Alias:</b>	CAPH2; Channel activating protease 2; Marapsin; MPN; Pancreasin; Protease serine 27; PRS27_HUMAN; Prss27; Serine protease 27; UNQ1884/PRO4327.
<b>Organism Species:</b>	Rabbit
<b>Clonality:</b>	Polyclonal
<b>React Species:</b>	Human,
<b>Applications:</b>	WB=1:500-2000ELISA=1:500-1000IHC-P=1:400-800IHC-F=1:400-800ICC=1:100-500IF=1:100-500 (Paraffin sections need antigen repair) not yet tested in other applications. optimal dilutions/concentrations should be determined by the end user.
<b>Molecular weight:</b>	28kDa
<b>Cellular localization:</b>	Secretory protein
<b>Form:</b>	Lyophilized or Liquid
<b>Concentration:</b>	1mg/ml
<b>immunogen:</b>	KLH conjugated synthetic peptide derived from human Marapsin1/CAPH2:151-250/290
<b>Lsotype:</b>	IgG
<b>Purification:</b>	affinity purified by Protein A
<b>Storage Buffer:</b>	0.01M TBS(pH7.4) with 1% BSA, 0.03% Proclin300 and 50% Glycerol.
<b>Storage:</b>	Store at -20 °C for one year. Avoid repeated freeze/thaw cycles. The lyophilized antibody is stable at room temperature for at least one month and for greater than a year when kept at -20°C. When reconstituted in sterile pH 7.4 0.01M PBS or diluent of antibody the antibody is stable for at least two weeks at 2-4 °C.
<b>PubMed:</b>	<a href="#">PubMed</a>
<b>Product Detail:</b>	Pancreasin is a pancreatic tryptic serine peptidase that cleaves peptides after an arginine residue.[supplied by OMIM, Sep 2003] <b>Subcellular Location:</b> Secreted.

**Tissue Specificity:**

Expressed predominantly in the pancreas.

**Post-translational modifications:**

N-glycosylated.

**Similarity:**

Belongs to the peptidase S1 family.

Contains 1 peptidase S1 domain.

**SWISS:**

Q9BQR3

**Gene ID:**

83886

**Database links:**

[Entrez Gene: 83886](#) Human

[Entrez Gene: 213171](#) Mouse

[Entrez Gene: 287108](#) Rat

[Omim: 608018](#) Human

[SwissProt: Q9BQR3](#) Human

[SwissProt: Q8BJR6](#) Mouse

[SwissProt: Q6BEA2](#) Rat

[Unigene: 332878](#) Human

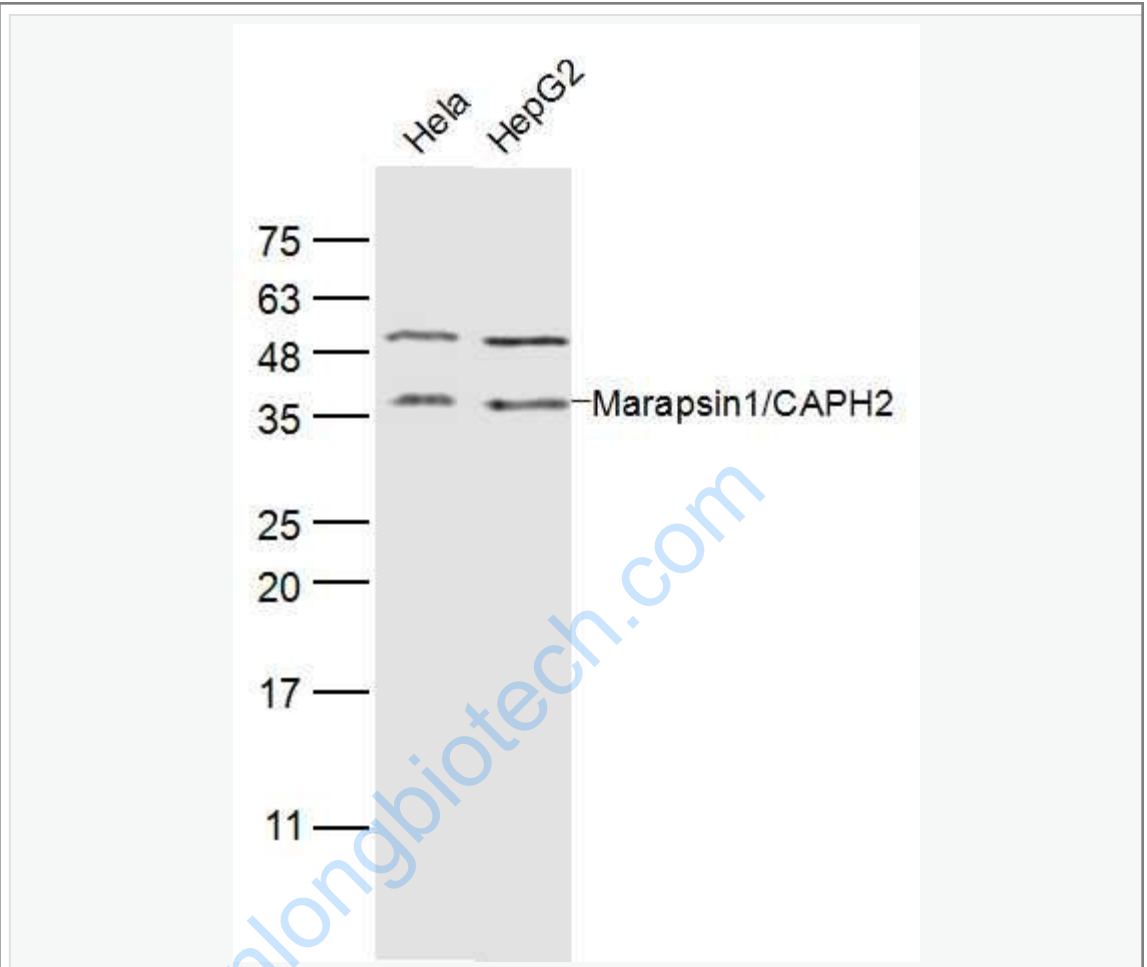
[Unigene: 133083](#) Mouse

[Unigene: 21284](#) Rat

**Important Note:**

This product as supplied is intended for research use only, not for use in human, therapeutic or diagnostic applications.

Picture:



Sample:

Hela(Human) Cell Lysate at 40 ug

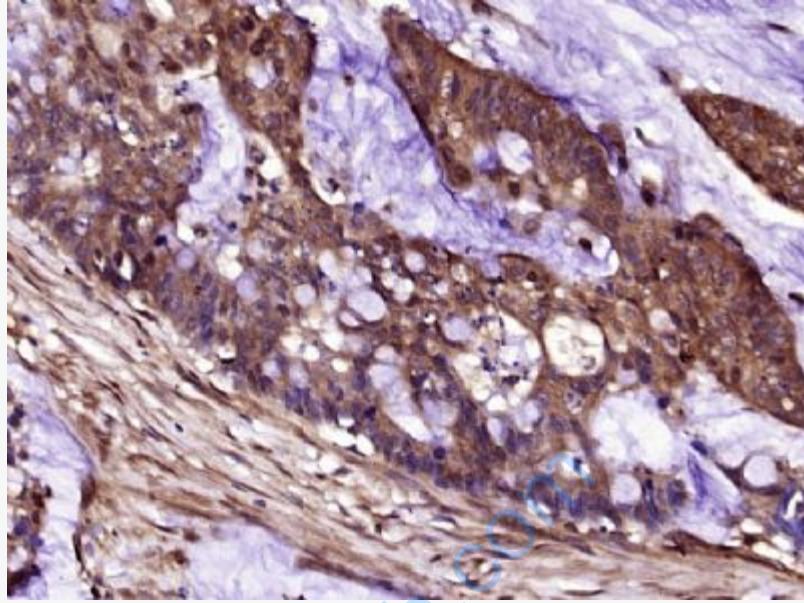
HepG2(Human) Cell Lysate at 40 ug

Primary: Anti-Marapsin1/CAPH2(SL18676R) at 1/300 dilution

Secondary: IRDye800CW Goat Anti-Rabbit IgG at 1/20000 dilution

Predicted band size: 28 kD

Observed band size: 28 kD



Paraformaldehyde-fixed, paraffin embedded (human cervical carcinoma); Antigen retrieval by boiling in sodium citrate buffer (pH6.0) for 15min; Block endogenous peroxidase by 3% hydrogen peroxide for 20 minutes; Blocking buffer (normal goat serum) at 37°C for 30min; Antibody incubation with (CAPH2) Polyclonal Antibody, Unconjugated (SL18676R) at 1:400 overnight at 4°C, followed by operating according to SP Kit(Rabbit) (sp-0023) instructions and DAB staining.